



SNOWMOBILE
ACCESSORIES



2025

SHARE THE RIDE



➤ ACCESSORIES

02-05	COVERS & TRANSPORT
06-10	WINDSHIELDS
11-20	BAGS & STORAGE
22-31	BUMPERS
32-33	UTILITY
34-37	HANDLEBARS
38-41	PROTECTION
42-45	YOUTH
46-55	PERFORMANCE
56-61	BACKCOUNTRY ACCESS
62-63	TRACKS
64-70	HANDLING & TRACTION
71-73	MAINTENANCE
74-77	BELTS
78-82	OIL & CARE



COVERS & TRANSPORT



8639-522



8639-523



8639-155



8639-160



8639-393



8639-392



8639-161



8639-394



POLYESTER COVERS

- Fade-resistant polyester fabric with water-repellent coating for excellent weather resistance
- 4 cinch-down side straps and hook-and-loop front fasteners enclose spindles
- Adjustable windshield strap and convenient zippered gas cap panel
- Trail versions fit low, mid, and high windshields, mirrors, and hand guards
- MTN versions fit low windshields and hand guards only
- Trailerable

8639-524 | '24-'25 ZR, Riot 600/858

8639-525 | '24-'25 M 600/858

8639-526 | '24-'25 ZR, Riot 600/858 WITH PASSENGER SEAT

8639-329 | '12-'24 M, Riot X, XF High Country, King Cat 141-165-in. (Except '24 600)

8639-328 | '12-'25 F, ZR, XF 129-137-in. (Except '24-'25 600/858)

8639-330 | '15-'25 PANTERA 3/6/7000 146-in.

PREMIUM COVERS

- Durable, fade-resistant Surlast premium fabric with water-repellent coating for ultimate outdoor storage protection
- 4 quick-adjusting cinch-down side straps and hook-and-loop front fasteners enclose spindles
- Advantage covers replace side straps with full-length perimeter straps and tunnel top straps for unrivaled ease of use and a snug fit everytime
- Adjustable windshield strap and convenient zippered gas cap panel
- Trail versions fit low, mid, and high windshields, mirrors, and hand guards
- MTN versions fit low windshields and hand guards only
- Trailerable

8639-522 -ADVANTAGE | '24-'25 ZR, Riot 600/858

8639-523- ADVANTAGE | '24-'25 M 600/858

8639-155 | '12-'25 F; ZR; XF 129-137-in. (Except '24-'25 600/858)

8639-392 | '12-'24 M; Riot X; XF High Country; King Cat 141-165-in. (Except '24 600)

8639-160 | '12-'24 M; Riot X; XF High Country; King Cat 141-165-in. (Except '24 600)

8639-161 | '12-'24 M; Riot X; XF High Country; King Cat 141-165-in. (Except '24 600)

8639-393 | '20-'25 Riot 6000/8000/9000; '20 Riot X 146-in.

8639-394 | '21-'24 Riot X 146-in..



CANVAS COVERS

- Excellent longevity from specially treated canvas
- Adjustable windshield strap provides a custom windshield/mirror fit (not included on 2-up Touring models)
- 4 cinch-down side straps
- Adjustable hook-and-loop front fasteners
- Easy-access, zippered gas cap panel
- Fits low, mid and high windshields and mirrors
- Trailerable

8639-001 | '12-'25 F, ZR, XF 129-137-in. (Except '24-'25 600/858)

8639-003 | '12-'24 M, Riot X, XF High Country, King Cat 141-165-in. (Except '24 600)

8639-150 | '20-'25 RIOT 6000/8000/9000; '20 Riot X 146-in.

8639-360 | '25 ZR 400; '21-'24 BLAST ZR

8639-361 | '25 M, Norseman, Riot 400; '21-'24 BLAST M, LT, XR

8639-362 | '25 Riot Touring; '22-'24 XR TOURING; '21-'25 400/BLAST 146-in. With Passenger Seat

8639-006 | '15-'25 Panthera 3/6/7000 146-in.

8639-002 | '12-'25 F, ZR, XF 129-141-in. with Passenger Seat (Except '24-'25 600/858)

8639-008 | '18-'24 Norseman; '16-'17 Bearcat 3000 LT 146-154-in.

8639-152 | '18-'24 Norseman With Passenger Seat



CUSTOM COVER

- Custom-fit options for non-current sled models
- Excellent longevity from specially treated canvas
- Cinch-down side attachments
- Adjustable hook-and-loop front fasteners
- Easy-access, zippered gas cap panel
- Trailerable

8639-004 | '15-'20 Lynx; '12-'14 F5, F570; '07-'11 F; '09-'11 Z1

8639-005 | '15-'20 Lynx LT; '15-'18 Bearcat LT 2000; '08-'14 T570, TZ1; '09-'14 Bearcat 570

8639-010 | '16-'19 Bearcat 7000 XT

7639-998 | '15-'20 Bearcat 2000 XT; '09-'15 XT

5639-017 | '03-'06 Firecat, Sabercat 128-in.

5639-018 | '99-'06 Z, ZL, ZR, ZRT, Thundercat, T660 121-in.

6639-044 | '06-'11 Crossfire; '06-'07 M 136-141-in.

5639-241 | '05-'11 M 153-162-in.

5639-020 | '00-'06 Panther, Panthera, T660 2-Up Touring



HALF COVER

- Prevents snow buildup on seat and dash
- Lightweight and ideal for overnight trips
- Includes hooks to attach to running boards
- Not recommended for trailering

6639-701 | '15-'25 Panthera 3/6/7000 146-in.



SHOP COVER

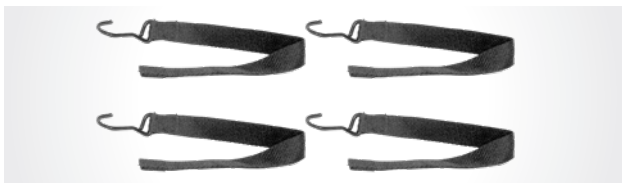
- Lightweight nylon cover is ideal for storage and keeping away dust
- Secure-fitting elastic bottom cord stretches to fit a wide variety of models
- Not recommended for trailering or prolonged outdoor use

8639-527 | UNIVERSAL (EXCEPT MODELS WITH PASSENGER SEAT)



PREMIUM COVER CLIP & STRAP

1641-479 | FITS COVERS WITH PLASTIC CINCH STRAPS



COVER HOOK & STRAP (4-PACK)

0636-527 - BLACK | FITS COVERS WITH FABRIC CINCH STRAPS



RATCHET TIE-DOWNS

- Secure sled to your trailer with heavy-duty nylon straps
- Spring-loaded retainer clips prevent S-hooks from falling off
- Comfortable ratchet-handle grip for easy operation
- 1.125-in. x 102-in. strap features Arctic Cat logos and 1,200-lb. load rating
- Sold in pairs

7639-183 | Universal



EZ WHEELZ

- Move your sled around the garage or load and unload your trailer with ease
- Protects carbides and driving surface from damage and provides full steering control
- Premium stainless steel and aluminum construction
- 10-in. airless tires with sealed ball bearings for unmatched durability and long life
- Install or remove in seconds without tools or permanent hardware
- Sold in pairs, no assembly required

8639-550 - BLACK | Universal '12-'25

WINDSHIELDS



FEATURED ON SLED:
8639-521 HIGH TOURING WINDSHIELD
8639-514 EVO FRONT BUMPER (MEDIUM GREEN)

FIND THE PERFECT WINDSHIELD TO MATCH YOUR STYLE OF RIDING.

PERFORMANCE RIDERS : A low cut windshield will be more aerodynamic and agile, and the chances of damage caused by impact are reduced.

EXTREME LOW



2.5-IN.

LOW SNO PRO



5-IN.

MID PERFORMANCE



12-IN.

TOURING AND LONG DISTANCE RIDERS:

A tall snowmobile windshield will be perfect to keep you warm and protected from the wind.

MID TOURING



15-IN.

HIGH TOURING



18-IN.



MID TOURING

- Provides good wind protection and a stylish appearance
- 12-in. H x 24-in. W
- No-drill auxiliary fastener installation (Hardware included)

8639-520 | '24-'25 ZR, Riot, M 600/858



HIGH TOURING

- Provides excellent wind protection and a stylish appearance
- 17-in. H x 27-in. W
- No-drill auxiliary fastener installation (Hardware included)
- Accepts 6639-770 Mirrors

8639-521 TINT | '24-'25 ZR, Riot, M 600/858



LOW SNO PRO®

- 5-in. H x 20-in. W
- Compatible with hand guards

1616-245 BLACK | '24-'25 ZR, Riot, M 600/858

1616-489 ORANGE | (Same application as 1616-245) **NEW**

1616-428 MEDIUM GREEN | (Same application as 1616-245)



WINDSHIELD HARDWARE KIT

- Includes replacement LH and RH molded retainers and fasteners

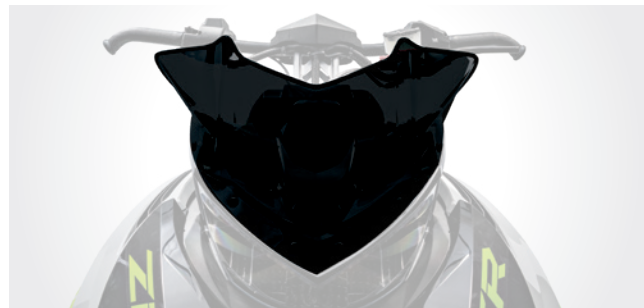
8639-148 | Catalyst Mid Touring, High Touring, & Enduro Windshields



EXTREME LOW

- 2.5-in. H x 16-in. W
- Accepts Hand Guards

7639-692 BLACK | '17-'25 9000; '18-'24 8000; '14-'25 7000; '18-'23 6000; '17-'19 3000 Models



LOW SNO PRO

- 5-in. H x 20-in. W
- Compatible with hand guards

7639-696 BLACK | '17-'25 9000; '18-'24 8000; '14-'25 7000; '18-'23 6000; '17-'19 3000 Models

7639-607 WHITE | (Same application as 7639-696)



PRO MTN

- Unique design acts as a low-profile windshield while providing glove/goggle storage
- Semi-rigid construction holds its shape

7639-293 BLACK | '17-'25 9000; '18-'24 8000; '14-'25 7000; '18-'23 6000; '17-'19 3000 Models



MID PERFORMANCE

- 12-in. H x 21-in. W
- 7639-838 measures 10-in. H x 23-in. W
- Compatible with hand guards

7639-700 BLACK | '17-'25 9000; '18-'24 8000; '14-'25 7000; '18-'23 6000; '17-'19 3000 Models

7639-701 MEDIUM GREEN | '17-'25 9000; '18-'24 8000; '14-'25 7000; '18-'23 6000; '17-'19 3000 Models



XC

- Shaped to the unique demands of terrain racing, this windscreen offers ample wind protection in a slim, aggressive shape
- 14-in. H x 25-in. W
- Compatible with hand guards

7639-913 TINT | '14-'25 7/9000; '14-'24 8000; '14-'23 6000; '14-'17 4/5000; '16-'19 3000; '12-'13 F, M, XF 800/1100; '12-'14 Sno Pro 600



8639-134



8639-135

MID LXR

- 13-in. H x 27-in. W
- Accepts 6639-902 Mirrors
- **NOTE:** Handlebar riser may need adjustment to provide clearance between hand guards and the windshield

8639-134 BLACK | '17-'25 9000; '18-'24 8000; '14-'25 7000; '18-'23 6000; '17-'19 3000 Models

8639-135 MEDIUM GREEN | (Same application as 8639-134)



8639-077

MID TOURING

- 15-in. H x 27-in. W
- Accepts 6639-630, 6639-770 Mirrors

7639-688 BLACK | '17-'25 9000; '18-'24 8000; '14-'25 7000; '18-'23 6000; '17-'19 3000 Models

8639-077 MEDIUM GREEN | (Same application as 7639-688)



HIGH TOURING

- 7639-383, 7639-371 measure 18-in. H x 28-in. W
- Accepts 6639-630, 6639-770 Mirrors

7639-383 BLACK | '17-'25 9000; '18-'24 8000; '14-'25 7000; '18-'23 6000; '17-'19 3000 Models

7639-371 BLACK | '14-'17 4/5/6/8000; '14-'16 9000; '12-'13 800/1100 Models



WINDSHIELD DART

667790 | Mid Touring; High Touring; Pro MTN Windscreens



WINDSHIELD RETAINER

2606-853 | '15-'19 Pantera, Bearcat 3/7000 High Touring Windshield



LOW SNO PRO

- Measures 4-in. H x 18-in. W
- Compatible with hand guards

7606-555 - BLACK | '25 400; '21-'24 Blast



MID PERFORMANCE

- Measures 10-in. H x 23-in. W
- Compatible with hand guards

8639-504 -TINT | '25 400; '21-'24 Blast



HIGH TOURING

- Measures 16-in. H x 24-in. W

1616-089 | '25 400; '21-'24 Blast

BAGS & STORAGE

ARCTIC CAT

ATACH

FEATURED ON SLED:
8639-496 ATACH 14L TUNNEL PACK
8639-500 ATACH 22L SADDLEBAGS

ATCH
LATCHING SYSTEM

CONNECT YOUR ACCESSORIES IN A SNAP

Add and remove accessories on your sled in seconds, revolutionizing how you customize your ride. This rugged, high-strength composite design is suited for the harshest conditions and requires no modification, fasteners or tools. With ATACH, it doesn't matter if you're in the showroom, at home, or out on the trail – it's easier than ever to configure accessories.



HOW TO INSTALL

- Open the dust covers, if equipped
- Set the accessory over the desired mounting location and drop the interlocking features into place
- Slide the accessory forward until both sides click into position, securing it to the vehicle
- If utilized, use the provided key in the lock to prevent theft

HOW TO REMOVE

- Unlock with the provided key to disable theft-prevention
- Press and hold the button on both sides and slide the accessory rearward
- Lift the accessory from the vehicle
- Replace the dust covers, if equipped



ATACH LITE TUNNEL PACK

- Expandable, soft-sided bag to bring what you need on the trail or in the backcountry
- Premium, water-resistant materials and anti-icing zippers keep contents secure in extreme conditions
- Variable 10 to 20-liter capacity

8639-611 10-20L | '24-'25 ZR, Riot, M 600/858; ATACH ProCross Base Kit **NEW**



ATACH CARRIER PACK

- Extra-large bag to bring along all the gear you need for an extended trip
- Detachable shoulder strap to easily carry your gear when you reach your destination
- Soft-sided construction with premium, water-resistant materials and anti-icing zippers keep contents secure in extreme conditions
- 60-liter capacity

8639-613 60L | '24-'25 ZR, Riot, M 600/858 **NEW**



ATACH TUNNEL PACK

- Robust, all-purpose bag to bring essential gear with you
- Semi-rigid construction with premium materials, glove-friendly buckles, and anti-icing zippers keep contents safe and accessible in the harshest conditions
- 14-liter (8639-496), 22-liter (8639-497) capacity

8639-496 14L | '24-'25 ZR, Riot, M 600/858; ATACH ProCross Base Kit

8639-497 22L | '24-'25 ZR, Riot, M 600/858; ATACH ProCross Base Kit



ATACH CATALYST PACK

- Designed specifically for the Catalyst platform, this bag combines roomy storage and a sleek appearance
- Semi-rigid construction with premium materials and anti-icing zippers keep contents safe and accessible in the harshest conditions
- 17-liter capacity

8639-498 17L | '24-'25 ZR, Riot, M 600/858



ATACH HIGH COUNTRY PACK

- Ultimate technical riding bag with a low profile and optimized features for the backcountry
- Lid stores most shovels fully assembled and doubles as a detachable utility tray
- **NOTE:** Avalanche experts recommend carrying a shovel in your backpack and a second shovel on the sled
- Semi-rigid construction with premium materials, waterproof interior pockets, glove-friendly buckles, and anti-icing zippers keep contents safe and accessible in the harshest conditions
- 21-liter capacity

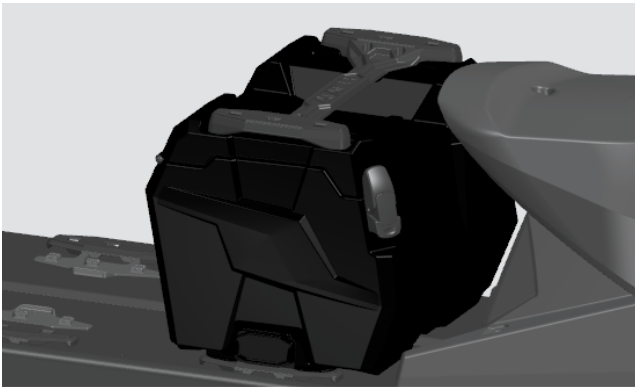
8639-499 21L | '24-'25 ZR, Riot, M 600/858; ATACH ProCross Base Kit



ATACH SADDLEBAGS

- Designed specifically for the Catalyst platform, these saddlebags offer extra carrying capacity for big adventures
- **NOTE:** Secured to vehicle with another ATACH accessory or ATACH Latch Kit (Sold separately) Not compatible with accessory running boards
- Semi-rigid construction with premium materials, glove-friendly buckles, and anti-icing zippers keep contents safe and accessible in the harshest conditions
- 11-liter capacity each (Sold in pairs)

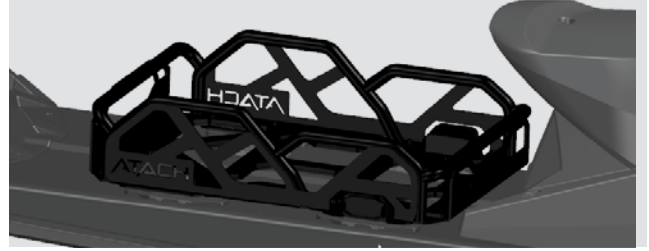
8639-500 22L | '24-'25 ZR, Riot, M 600/858



ATACH CRUISER BOX

- Robust, molded polyethylene container includes keyed compartment locks for extra security
- Stacking capability allows other ATACH accessories to be installed on top or in parallel
- Lid includes convenient carrying handle and is sealed to keep out dust and moisture
- 11-in. L x 15-in. W x 10-in. H, 17-liter capacity

8639-617 17L | '24-'25 ZR, Riot, M 600/858 **NEW**



ATACH CROSSTREK RACK

- Secure bulky items that conventional storage won't accommodate
- Lightweight, all-welded aluminum construction and durable powder coat finish
- Rubber floor inlay prevents scratches and keeps cargo in place
- Pair with Cargo Net (8639-615) to contain smaller items
- 20-in. L x 15-in. W x 5-in. H

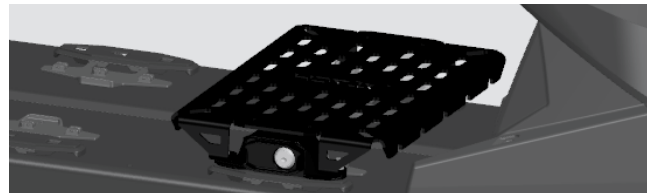
8639-614 3.75 BLACK | '24-'25 ZR, Riot, M 600/858; ATACH ProCross Base Kit **NEW**



CARGO NET

- Premium, durable sewn net stretches to secure loose cargo in ATACH CrossTrek Rack

8639-615 | Vehicles with ATACH CrossTrek Rack Equipped **NEW**



ATACH PLATFORM

- Simple, lightweight platform provides universal base for custom ATACH accessories
- Aluminum construction and durable powder coat finish
- 11-in. L x 15-in. W

8639-616 | '24-'25 ZR, Riot, M 600/858; ATACH ProCross Base Kit **NEW**



ATACH BASE KIT

- The ATACH accessory mounting system brings unparalleled convenience and security to the riding experience
- Constructed from durable, high-strength composite materials to function reliably in any environment
- Includes 2 base plates, 2 dust covers, hardware, and instructions

8639-506 | '13-'25 F, ZR, Riot, M, XF Models (Except '24 600/858)



ATACH LATCH KIT

- Includes 2 latch mechanisms, integrated locks with keys, (8639-552 only) hardware, and instructions

8639-552 LOCKING | ATACH Accessories

8639-551 NON-LOCKING | ATACH Accessories



TRAIL PACK

- Durable and stylish bags provide easy-access storage for the long-distance touring rider
- Semi-rigid construction
- Includes cam-lock or strap-and-hook attachments
- Available in two sizes; Mid fits 129-137-in. models, Large fits 137-in. models
- 27-liter (8639-029), 33-liter (8939-030), 18.5-liter (8639-363) capacity

8639-029 MEDIUM | '13-'25 F, ZR, Riot, XF 129-146-in. (Except '24-'25 600/858)

8639-030 LARGE | '13-'25 ZR, Riot, XF 137-146-in. (Except '24-'25 600/858)

8639-363 MEDIUM | '21-'25 400/Blast



TUNNEL PACK

- Large capacity bags provide convenient, economical storage
- Strap-and-hook attachment fits most flat-tunnel models
- Available in two sizes; Mid fits 129-in. and 137-in. models, Large fits 137-in. models
- 20-liter (8639-033), 30-liter (8639-034) capacity

8639-033 MEDIUM | '13-'25 F, ZR, Riot, XF 129-146-in. (Except '24-'25 600/858)

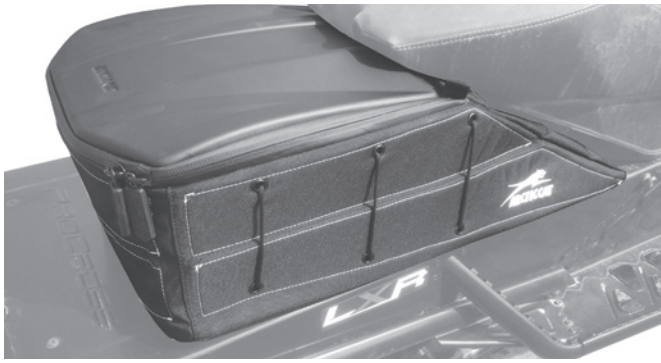
8639-034 LARGE | '16-'25 ZR, Riot, XF 137-146-in. (Except '24-'25 600/858)



TUNNEL GEAR BAG

- Large storage capacity
- Built-in cinch straps keep cargo secure
- Strap-and-hook attachment
- Measures 20-in. L x 12-in. W x 8-in. H

6639-704 | '15-'20 Lynx; '12-'14 F5, F570; '07-'11 F; '09-'11 Z1



XL TUNNEL GEAR BAG

- Extra large, heavy-duty storage bag
- Semi-rigid construction with expandable top section
- Cam-lock attachment with quarter-turn lock system eliminates straps and hooks
- Measures 22-in. L x 12-in. W x 7-in. H

7639-894 | '13-'25 F, ZR, Riot, M, XF Models (Except '24-'25 600/858)



MOUNTAIN SHOVEL PACK

- These rugged, low-profile bags offer easy-access storage and space to stow a shovel
 - Semi-rigid construction and cam-lock quarter-turn attachment eliminates straps and hooks
 - Mid 17-liter, Large 28-liter capacity
- NOTE:** Avalanche experts recommend carrying a shovel in your backpack and a second shovel on the sled

8639-031 MEDIUM | '12-'25 M, Riot; (Except '24-'25 600/858) M 400/Blast; XF High Country; King Cat 141-165-in.

8639-032 LARGE | Same application as 8639-031



MOUNTAIN PACK

- Tunnel storage bags specialized for the mountains
- Sleek, compression-molded construction to shed snow
- Cam-lock attachment with quarter-turn lock system eliminates straps and hooks
- 7639-433 features removable lid, cargo dividers, and cinch straps to keep contents secure
- Large 18-liter, (22-in. L x 15-in. W x 6-in. H)
Mid 14-liter (13-in. L x 14-in. W x 8-in. H) capacity

7639-433 LARGE | '10-'24 M; '21-'25 Riot, Riot X; (Except '24-'25 600/858) '13-'19 XF Models

7639-432 MEDIUM | Same application as 7639-433



MOUNTAIN TUNNEL PACK

- Low-profile storage with adjustable straps and quick-attaching clips for simple removal
- Designed to fit models with short Mountain seat (Non-electric start)
- Measures 16-in. L x 12-in. W x 4-in. H

6639-798 | '14-'24 M 8000; '14-'23 M 6000 (Except ES Models)



WINDSHIELD BAG

- Offers out-of-the-way storage for smaller items
- Fits neatly behind windshield

7639-691 | '17-'25 9000; '18-'24 8000; '14-'25 7000; '18-'23 6000; '17-'19 3000 Models

7639-289 | '14-'17 4/5/6/8000; '14-'16 9000; '12-'13 F, M, XF 800/1100



DASH CADDY

- Dash storage with sturdy polyethylene construction
- Compartment door features a foam seal to keep contents safe

8639-219 | '17-'25 9000; '18-'24 8000; '14-'25 7000; '18-'23 6000; '17-'19 3000 Models



8639-185

HANDLEBAR BAG

- Easy-access storage
- Convenient hook-and-loop attachment

8639-185 | '07-'25 Models With Trail Handlebar

8639-186 | '05-'25 Models With MTN Handlebar

8639-364 | '21-'25 400/Blast



PANTERA HANDLEBAR BAG

6639-715 | '15-'25 Pantera 3/6/7000



CUSTOM HANDLEBAR BAG

- Lightweight storage for any sled

6639-716 | Universal



TANK BAG

- Convenient, easy-access storage
- Easily removes for refueling
- Large map window

7639-287 | '13-'25 F, ZR, Riot, M, XF Models (Except '24-'25 600/858)



HEATED GOGGLE BAG

- Engine heat dries goggles, masks or gloves while you ride
NOTE: Do not leave goggles in holder for extended periods; heat may damage goggles.

7639-591 | '17-'25 9000; '18-'24 8000; '18-'23 6000 Models

5639-767 | '14-'25 7000; '14-'17 4/5/6/8000; '17-'19 3000; '14-'16 9000; '12-'13 F, M, XF 800/1100 Models

8639-366 | '21-'25 400/Blast



CARGO BAG

- Large main storage area
- Quick-attach mounting straps

7639-764 | '18-'24 Norseman; '16-'17 Bearcat 3000 LT 146-154"



HARD SADDLEBAGS

- Premium injection-molded saddlebags provide clean, lockable storage
- Features large-capacity storage and quick-release attachment
- Includes right and left-side bags, each measures 21-in. L x 10-in. W x 8-in. H

7639-568 | '15-'25 Pantera 3/6/7000; '16-'18 XF CrossTour 6/7/9000

SPEEDRACK® II SYSTEM

- A simple, fast and strong accessory attachment system with accessories that can be added or removed in seconds
- Attach in two easy steps:
 1. Position the accessory
 2. Insert SpeedLock™ and press down thumb lock



SPEEDRACK BASE KIT

- SpeedRack Base attaches to the tunnel to provide the mount for SpeedRack accessories
- Includes front and rear SpeedRack base mounts and one SpeedLock

7639-342 | Universal '13-'25 (Except '24-'25 600/858 Models; '20 Riot; '17-'19 XF Cross Country; Pantera; Crosstour)



SPEEDRACK GEAR BAG

- Compact storage bag attaches to SpeedRack Base
- Required SpeedLock is included in SpeedRack Base Kit

8639-178 | Works with SpeedRack Base Kit



SPEEDRACK GEAR RACK

- Lightweight aluminum rack provides capacity and tiedown points for cargo
- Attaches to SpeedRack Base Kit
- Required SpeedLock is included in SpeedRack Base Kit
- 10-in. L x 11-in. W

7639-344 **BLACK** | Works with SpeedRack Base Kit

7639-345 **TEAM ARCTIC GREEN** | Works with SpeedRack Base Kit

7639-346 **ORANGE** | Works with SpeedRack Base Kit

7639-347 **WHITE** | Works with SpeedRack Base Kit

7639-348 **MEDIUM GREEN** | Works with SpeedRack Base Kit

7639-349 **FIRE RED** | Works with SpeedRack Base Kit



SPEEDRACK CARGO BOX

- Durable molded polyethylene construction
- Removable lid with foam seal
- Built-in cinch strap keeps cargo secure
- Attaches to SpeedRack Base
- Required SpeedLock is included in SpeedRack Base Kit
- 20-in. L x 12-in. W x 10-in. H, 25-liter capacity

7639-351 | Works with SpeedRack Base Kit



SPEEDRACK CARGO RACK

- Tubular steel rack provides added storage capacity
- Attaches to SpeedRack Base Kit
- Required SpeedLock is included in SpeedRack Base Kit
- 13 in. L x 15 in. W

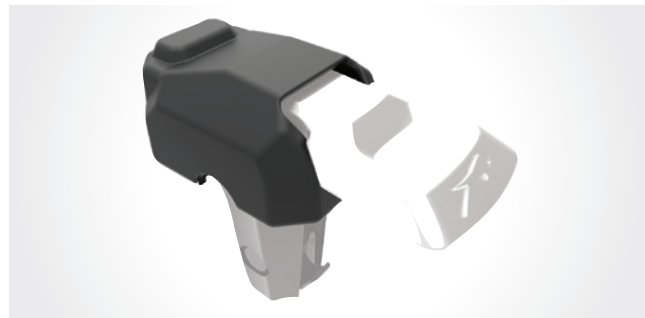
7639-350 | Works with SpeedRack Base Kit



SPEEDLOCK

- Drop-in system quickly attaches with easy-to-use thumb locks
- Durable cast-aluminum components with one-click unlocking for fast removal

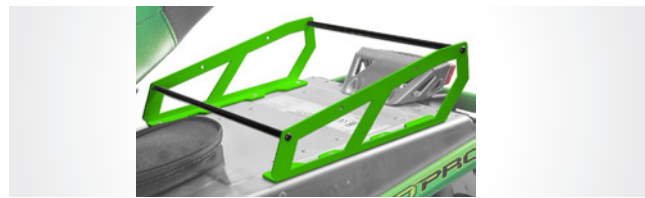
2436-501 | Works with SpeedRack Base Kit



SPEEDLOCK COVER

- Slip-on rubber cover retains mechanical mobility of SpeedLock in wet, slushy conditions

2436-540 | Works with SpeedRack



TUNNEL RACK

- Slim, stylish, powder-coated aluminum rack
- Tunnel Reinforcement Kit (M models) recommended for large loads
- 11-in. L x 14-in. W

7639-336 BLACK | Universal (Flat-Top Tunnel)

7639-337 TEAM ARCTIC GREEN | Universal (Flat-Top Tunnel)

7639-338 ORANGE | Universal (Flat-Top Tunnel)

7639-339 WHITE | Universal (Flat-Top Tunnel)



BILLET TUNNEL RACK

- Durable billet aluminum with anodized finish
- Includes extensions to customize width
- Tunnel Reinforcement Kit (M models) recommended for large loads
- 7.75-in. L x 12.25-14-in. W x 2.5-in. H

8639-056 | BLACK

8639-057 | GRAY

8639-058 | PURPLE

8639-230 | BRONZE



LOW PROFILE TUNNEL RACK

- Stylish, lightweight, powder-coated aluminum
- Tunnel Reinforcement Kit (M models) recommended for large loads
- 8-in. L x 14-in. W

8639-059 **BLACK** | Universal (Flat-Top Tunnel)

8639-060 **MEDIUM GREEN** | (Same application as 8639-059)

8639-062 **ORANGE** | (Same application as 8639-059)

8639-063 **PURPLE** | (Same application as 8639-059)

8639-237 **ELECTRIC BLUE** | (Same application as 8639-059)

8639-166 **ALUMINUM** | (Same application as 8639-059)



TUNNEL PAD

- Protects the top of the tunnel when carrying cargo
- Adhesive attachment

7639-997 | Universal (Except *24-*25 600/858 Models)



RACK STRAP

- Strong, heavy-duty nylon straps
- Quick-release buckle
- Easily secure gear

7639-463 | Universal



BUMPERS



FEATURED ON SLED:
8639-521 HIGH TOURING WINDSHIELD
8639-514 EVO FRONT BUMPER (MEDIUM GREEN)



EVO BUMPER

- Single-piece front bumper provides rigid protection from obstacles and a custom appearance
- High-strength, lightweight aluminum construction features extruded tubes and rugged center bash plate
- Durable, factory-matched powder-coat finish
- 2.6-lbs.

8639-605 BLACK | '24-'25 ZR, Riot, M 600/858 **NEW**

8639-514 MEDIUM GREEN | Same application as 8639-605

8639-515 FIRE RED | Same application as 8639-605

8639-516 SKYE BLUE | Same application as 8639-605



PRO BUMPER

- Aluminum bumper provides added protection
- Durable factory-matched powder-coat finish
- 4.5-lbs.

8639-400 GEN 2 BLACK | '18-'24 8000; '19-'25 7000; '18-'23 6000; '21-'25 400/4000; '19 3000

8639-401 GEN 2 MEDIUM GREEN | (Same application as 8639-400)

8639-402 GEN 2 HYPER GREEN | (Same application as 8639-400)

7639-301 GEN 2 BLACK | '17-'25 9000

6639-724 GEN 1 BLACK | '14-'17 4/5/6/8000; '14-'18 3/7000; '14-'16 9000; '12-13 800/1100

6639-723 GEN 1 ALUMINUM | Same application as 6639-724



PRO MTN BUMPER

- Lightweight aluminum bumper with a stylish, aggressive design
- Open design minimizes snow buildup
- Durable factory-matched powder-coat finish
- 3.0-lbs.

8639-197 GEN 2 BLACK | '18-'24 8000; '19-'25 7000; '18-'23 6000; '19 3000

8639-189 GEN 2 MEDIUM GREEN | (Same application as 8639-197)

8639-190 GEN 2 HYPER GREEN | (Same application as 8639-197)

8639-192 GEN 2 ORANGE | (Same application as 8639-197)

8639-196 GEN 2 FIRE RED | (Same application as 8639-197)

7639-308 GEN 1 BLACK | '14-'17 4/5/6/8000; '14-'18 3/7000; '14-'16 9000; '12-13 800/1100

7639-307 GEN 1 ALUMINUM | (Same application as 7639-308)



PROCLIMB™ BUMPER

- Large-diameter top tube provides added protection
- Open-tube design lets snow drop through
- Durable factory-matched powder-coat finish
- 3.5-lbs.

8639-405 GEN 2 BLACK | '18-'24 8000; '19-'25 7000; '18-'23 6000; '21-'25 400/4000; '19 3000

8639-390 GEN 2 BLACK TEXTURED | (Same application as 8639-405)

8639-406 GEN 2 MEDIUM GREEN | (Same application as 8639-405)

8639-407 GEN 2 HYPER GREEN | (Same application as 8639-405)

8639-409 GEN 2 FIRE RED | (Same application as 8639-405)

6639-286 GEN 1 BLACK | '14-'17 4/5/6/8000; '14-'18 3/7000; '14-'16 9000; '12-13 800/1100



EVO REAR BUMPER

- Single-piece rear bumper provides improved ergonomics, enhanced chassis stiffness, and a custom appearance
- High-strength, lightweight aluminum construction features extruded tubes and contoured reinforcement plates
- Rear grab handle optimized for accessibility and minimal drag in deep snow
- Durable, factory-matched powder-coat finish
- Accepts factory or accessory running boards

8639-606 BLACK | '24-'25 ZR 600/858 129-in., M 600/858 146-in. **NEW**

8639-517 MEDIUM GREEN | (Same application as 8639-606)

8639-495 SKYE BLUE | (Same application as 8639-606)

8639-607 BLACK | '24-'25 ZR 600/858 137-in., M 600/858 154-in. **NEW**

8639-518 MEDIUM GREEN | (Same application as 8639-607)

8639-483 SKYE BLUE | (Same application as 8639-607)

8639-608 BLACK | '24-'25 Riot 600/858, M 858 165-in. **NEW**

639-00018 MEDIUM GREEN | (Same application as 8639-608) **NEW**

8639-519 FIRE RED | (Same application as 8639-608)

8639-484 SKYE BLUE | (Same application as 8639-608)



PROCROSS™ REAR BUMPER

- Rugged, 3-piece aluminum bumper features stylish side plates and tubular grab handle for ergonomic function
- Durable powder-coat finish

7639-316 BLACK | '13-'23 F, ZR 129-in. Models

7639-317 TEAM ARCTIC GREEN | (Same application as 7639-316)

7639-318 ORANGE | (Same application as 7639-316)

7639-319 WHITE | (Same application as 7639-316)

7639-323 BLACK | '18-'24 ZR, XF 6/7/8000; '17-'25 ZR, XF 9000 137-in.

7639-324 TEAM ARCTIC GREEN | (Same application as 7639-323)

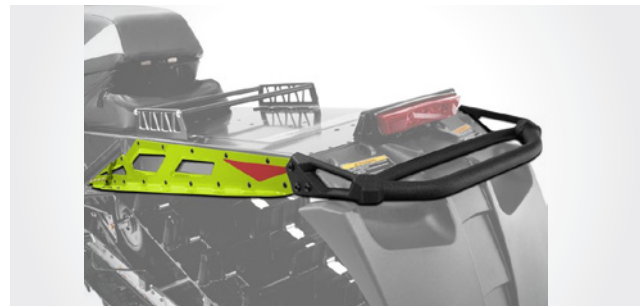
7639-325 ORANGE | (Same application as 7639-323)

7639-326 WHITE | (Same application as 7639-323)

7639-331 TEAM ARCTIC GREEN | '21-'24 Riot X; '16-'24 M 141-146-in.; '13-'17 XF, '16-'19 XF High Country 137-141-in.; '16 ZR 137-in.

7639-332 ORANGE | (Same application as 7639-331)

7639-333 WHITE | (Same application as 7639-331)



PRO MTN REAR BUMPER

- Rugged bumper features aluminum side plates and a tubular grab handle
- Embossed features add style and strength
- Durable powder-coat finish
- Accepts Pro MTN Running Boards
- 141-154-in., 4.5-lbs.; 162-165-in., 5.2-lbs.

8639-085 BLACK | '12-'24 M 153-154-in.; '20-'25 Riot; (Except '24-'25 600/858) '20 Riot X; '17-'19 XF High Country 153-in.; '12-'15 XF High Country

8639-086 MEDIUM GREEN | (Same application as 8639-085)

8639-279 HYPER GREEN | (Same application as 8639-085)

8639-282 FIRE RED | (Same application as 8639-085)

8639-091 BLACK GLOSS | 12-'24 M, King Cat 162-165-in.

8639-092 MEDIUM GREEN | (Same application as 8639-091)

8639-286 HYPER GREEN | (Same application as 8639-091)

8639-289 FIRE RED | (Same application as 8639-091)

THE ALL-NEW CATALYST G8 DISPLAY KIT

Upgrade base model gauge to the Arctic Cat G8 powered by Garmin 8.0-in touch screen with full instrumentation to monitor vehicle performance.



MAIN MENU

Provides simple navigation between Map, Vehicle Information, Media, Phone Applications and much more. The main menu is user customizable.



VEHICLE DATA SCREEN

Includes coolant temperature, fuel level, speedometer, odometer, RPMs, reverse indicator, and user customizable data fields.



STATUS BAR

Status bar at the bottom of all screens offers quick navigation, active warnings, and key vehicle information.



CATALYST G8 DISPLAY KIT - 639-00007

'24-'25 ZR, RIOT, M 600/858

CATALYST G8 DISPLAY KIT - 639-00012

'24-'25 ZR, RIOT, M 600/858

Includes display, harness, hardware, and instructions

NOTE: Requires replacement hood

1616-506 BLACK

1616-495 MEDIUM GREEN

1616-496 SUNSET ORANGE

606-00020 GALAXY BLUE

606-00021 STAR WHITE



GROUP RIDE

Without cellular coverage, users can use the integrated Group Ride Radio to see, text, and track up to 20 riders. Paired with a compatible Bluetooth headset, riders can also communicate with other riders through 2-way voice. Riders without an integrated device can download the free mobile app and join a cellular based Group Ride as well as enjoy all mapping features. *Radio based Group Ride not available in Canada.



TRAIL MAPS

Pre-loaded snowmobile trail maps for the United States and Canada that include points of interest such as restaurants, and gas stations. Map views are layered to include topography, private/public lands, and various other features. Users can also plan and track routes.



PHONE CONNECTIVITY

Receive smart notifications, access dial pad, view contacts, receive live weather forecasts, look at the radar and play music when paired to a mobile device.

BUILT FOR ADVENTURE

Stay connected with Garmin™ Tread, the 5.5-in. navigator that is built to withstand the toughest terrains, temperatures, and weather.

- « Rugged design and glove-friendly touchscreen made for the toughest riding environments
- « Preloaded topography, road, and land maps, compatible with trail maps
- « Pair with compatible Bluetooth device for handsfree communication and enhanced features through the official Tread app
- « Update device via Wi-Fi™, no subscription needed

CHOOSE BETWEEN

PREMIUM OR STANDARD TREAD GPS KITS



TREAD

PREMIUM GPS KIT

TREAD GPS KIT* - 3441-555

Includes GPS, Group Ride Radio module + antenna + cable, universal mount, power cable, and user guide

STANDARD GPS KIT

TREAD GPS KIT* - 3441-557

Includes GPS, universal mount, power cable, and user guide



TRAIL

TREAD GPS INSTALL KIT - 8639-436

'18-'24 8000; '17-'25 9000; '14-'25 7000; '18-'23 6000;

'17-'19 3000 MODELS

- « Mounts Tread above the gauge for superior visibility from a seated riding position
- « Custom housing protects all components, compatible with most windshields (Excludes Mid Performance and Pro MTN)

Includes: GPS console mount, power harness, hardware, and instructions



HYBRID

TREAD GPS INSTALL KIT - 8639-528

'24-'25 ZR, RIOT, M 600/858

- « Mounts Tread in a neutral position ahead of the gauge for a clear view
- « Custom semi-rigid mount isolates screen from vibration and opens to access heated storage compartment below

Includes: GPS mount, power harness, antenna mount, and instructions



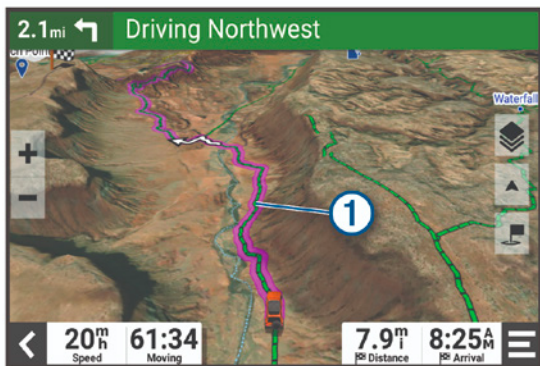
MOUNTAIN

TREAD GPS INSTALL KIT - 8639-435

'18-'24 8000; '17-'25 9000; '18-'23 6000 MODELS

- « Mounts Tread below the gauge for easy viewing from a standing riding position and protection from backcountry obstacles
- « Integrated heated storage bag for goggles, phone, or other items

Includes: GPS bag, power harness, antenna mount, and instructions



➤ Plan your path based on your skill and comfort level using Garmin **Trail Rating** information.



➤ **Built in** altimeter, barometer, compass, pitch and roll gauges help you navigate any challenging terrain.

Stay connected with **Group Ride Mobile**, featuring group tracking and route sharing with up to 20 riders. Upgrade to **Group Ride Radio** voice communication with the Premium GPS kit (US only).



FOR MORE TREAD FEATURES AND COMPLETE DETAILS, VISIT ARCTICCAT.COM OR A DEALER NEAR YOU. GARMIN - GARMIN IS A REGISTERED TRADEMARK OF GARMIN, INC. OR ITS SUBSIDIARIES



WIND DEFLECTORS

- Lightweight, stylish deflectors add wind protection
- Sold as a pair, with right and left deflectors

7639-816 GEN 2 TRAIL | '18-'24 6/8000 (Except M, '21-'23 Riot X, '24 600); '17-'25 9000; '19-'25 7000; '19 3000 Models

6639-453 GEN 1 | '14-'17 4/5/6/8000; '14-'18 3/7000; '14-'16 9000; '12-13 800/1100 Models



WINDSHIELD MIRRORS

- Mounts to the outside of the windshield
- 6639-630, 6639-770 fit accessory Mid Touring and High Touring windshields
- 6639-902 fits Mid LXR windshields
- Sold in pairs

6639-630 | ProCross Mid Touring & High Touring Windshields

6639-770 | ProCross & Catalyst Mid Touring & High Touring Windshields

6639-902 | ProCross Mid LXR Windshields



HOOD-MOUNTED MIRRORS

- Mounts to the hood panel
- Adjustable shaft for optimum view
- Works with all production or accessory windshields
- Sold in pairs

8639-276 GEN 2 | '17-'25 9000; '18-'24 8000; '19-'25 7000; '18-'23 6000; '21-'25 400/4000; '19 3000 Models

5639-832 GEN 1 | '14-'17 4/5/6/8000; '14-'18 3/7000; '14-'16 9000; '12-'13 800/1100



COMPACT MIRROR

- Mounts to the inside of the windshield
- Sold individually

4639-565 | '15-'20 Lynx; '15-'18 Bearcat 2000; '12-'14 F5, F570; '07-'11 F; '08-'14 T570, Bearcat 570; '09-'11 Z1



HAND MIRROR

- Easy on/off with hook-and-loop strap

4992-810 | Universal



ATACH PASSENGER SEAT

- Bring a passenger along in comfort with the convenience of ATACH mounting
- Install or completely remove in seconds, without tools, with a lock and 2 keys for extra security
- Roomy, built-in storage box keeps travel gear protected
- Includes passenger seat with backrest, handholds, tunnel reinforcements, and wind deflectors
- 8639-502 also includes passenger hand warmers, heated seat, and heated shield outlet

NOTE: Heavy-duty suspension springs are recommended for 2-up riding, see Handling section

8639-501 STANDARD | '24-'25 ZR, Riot 600/858

8639-502 HEATED | Same application as 8639-501



PASSENGER SEAT

- Share the riding experience in comfort and style
- Detachable base allows easy conversion from solo to 2-up riding and back again
- Includes passenger seat with backrest, handholds, tunnel mounts and footrests

NOTE: Riot, XF High Country, and Cross Country models with mountain seat require a compatible trail (ZR) operator seat

NOTE: Heavy-duty suspension springs are recommended for 2-up riding, see Handling section

8639-217 | '13-'25 F, ZR, Riot, (See Note) XF (Except '24-'25 600/858)



PASSENGER SEAT

- Easily converts your sled to carry a passenger
- Includes passenger seat with backrest, handholds, tunnel mounts and footrests

NOTE: Heavy-duty suspension springs are recommended for 2-up riding, see Handling section

8639-410 | '25 Riot, Norseman 400; '21-'24 Blast LT, XR

7639-826 | '18-'24 Norseman ; '16-'17 Bearcat LT 3000



PASSENGER SEAT

- Passenger seat with backrest, handholds, and footrests
 - Includes seat assembly and tunnel-mounted storage box
- NOTE:** Heavy-duty suspension springs are recommended for 2-up riding, see Handling section

7639-833 | '18-'19 Bearcat 7000 XT



PASSENGER WIND DEFLECTORS

- Semi-rigid guards add style and protect passenger hands from the cold

8639-437 | Riot 400 Touring; Blast XR Touring; 8639-410, 7639-826 Passenger Seats



PASSENGER MUFFS

- Water- and wind-resistant nylon outer
- Easy-attach hook-and-loop straps
- Mounts with or without standard wind deflectors

7639-361 | '15-'24 Pantera; '15-'20 Lynx LT; '15-'18 Bearcat LT 2000; '08-'14 T570, TZ1; '09-'14 Bearcat 570

8639-177 | Fits Passenger Seat 8639-217

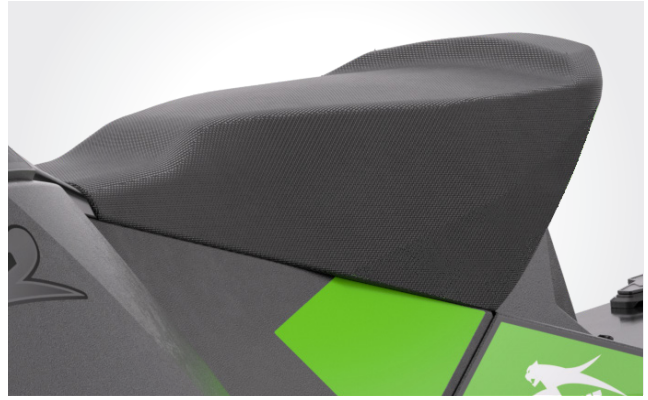


PASSENGER HAND WARMERS

- Increase 2-up rider comfort by adding passenger hand warmers
- 8639-212 includes elements, wiring harness, passenger control switch, hardware, and instructions
- 6639-281 includes wiring harness, passenger control switch, hardware, and instructions

8639-212 | Fits 8639-217 Passenger Seat

6639-281 | Fits 8639-410, 7639-826 Passenger Seats; Blast XR Touring



HEATED SEAT

- Provides rider warmth and comfort
- Includes complete heated trail seat assembly, wiring, and instructions

8639-539 BLACK | '24-'25 ZR, RIOT, M 600/858



HEATED SEAT KITS

- Provides rider warmth and comfort
- Includes heating element and wiring
- 6/8000 models require LED headlight

7639-968 | '18-'24 8000, '18-'23 6000 Models with LED Headlight (Except M)

7639-965 | '18-'25 ZR 7000; '18-'19 ZR 3000; '18-'19 XF High Country 9000

7639-966 | '18-'19 Pantera 3000; '18 Pantera 7000



HEATED SHIELD OUTLET

- Dash-mounted outlet for heated shield

7639-041 | Universal '12-'25



HEATED SHIELD ADAPTER

- Quickly adapts a heated shield cord to the sled's accessory outlet

5639-645 | Universal



ELECTRIC START KITS

- Crank up your machine effortlessly with the turn of a key
- Includes starter components, ring gear, wiring harness, hardware, and battery

NOTE: M 8000 requires larger fuel tank and seat from ES model

8639-133 | '19-'24 8000 Models

7639-846 | '18 8000 Models

7639-126 | '14-'17 8000; '12-'13 F, XF, M 800

7639-501 | '14-'17 ZR 6000; '15-'17 M, XF High Country 6000





UTILITY



OVERLOAD KITS

- Added spring tension to support 2-up riding
- Increased tow load pull and carry
- Quick engagement/disengagement

8639-378 | '25 Riot, Norseman 400; '21-'24 Blast LT, XR

7639-978 | '19-'24 Norseman; '16-'18 XF CrossTour; '16-'17 Bearcat 3000; '14-'16 Bearcat XTE



HITCH KITS

- Sturdy steel draw bar kit allows confident towing with pivot or pintle-style hitch
- Installs below factory or accessory rear bumper
- Maximum tow rating 20-lb. vertical load, 150-lb. drawbar (pull)

8639-529 PIVOT | '24-'25 ZR 600/858 129-in.

8639-530 PINTLE | (Same application as 8639-529)

8639-531 PIVOT | '24-'25 ZR 600/858 137-in. (EXCEPT R XC), M 600/858 146-in.

8639-532 PINTLE | (Same application as 8639-531)

8639-533 PIVOT | '24-'25 RIOT 600/858, M 600/858 154-in.

8639-534 PINTLE | (Same application as 8639-533)



HITCH KITS

- Strong, secure steel bumper available with a pivot or pintle hitch
- Most kits include 8 mounting pockets
- Maximum tow rating 20-lb. vertical load, 150-lbs. drawbar (pull)

7639-356 PIVOT | '17-'25 9000, '18-'24 8000, '19-'25 7000, '18-'23 6000 137-in.

7639-357 PINTLE | (Same application as 7639-356)

6639-991 PIVOT | '21-'24 Riot X; '16-'19 XF High Country, M 141-in.; '16-'17 5/6/8000, '16 9000, '16-'18 7000 XF CrossTrek, ZR 137"; '13-'15 XF 137-141"

6639-911 PINTLE | (Same application as 6639-991)

6639-992 PIVOT | '20-'25 Riot; '20 Riot X; '12-'24 M 153-154-in.; '17-'19 XF High Country 153-in.; '13-'15 XF High Country (Except '24 600)

6639-912 PINTLE | (Same application as 6639-992)

6639-993 PIVOT | '12-'24 M 162-165-in.

6639-913 PIVOT | (Same application as 6639-993)

6639-061 PIVOT | '12 F 128"

4639-723 PIVOT | '15-'20 Lynx LT; '15-'18 Bearcat LT 2000; 2008-'14 T570, T71; 2009-'14 Bearcat 570



6639-541

TOW HITCH

- Quick and easy installation
- Mounts to standard bumper
- For light-duty use

6639-541 PIVOT | '25 ZR, RIOT 7/9000; '12-'24 M, RIOT, ZR, XF, F (EXCEPT '24 600)

8639-416 PIVOT | '18-'25 NORSEMAN; '21-'25 400/BLAST; '15-'25 PANTERA; '16-'18 XF CROSSTOUR

6639-740 PINTLE | (Same application as 8639-416)

5639-324 PIVOT | '15-'20 LYNX; '12-'14 F5, F570; '09-'11 CF, CFR, M; '10-'11 F, Z1



TOW STRAP

- Tow a disabled sled safely and easily with durable nylon strap
 - Includes handy storage pouch
- NOTE:** Not for towing/transporting people (Requires solid hitch)

4639-247 | Universal

HANDLEBARS



FEATURED ON SLED:
8639-354 PROCROSS LIGHTED HAND GUARDS (BLACK)
7639-342 SPEEDRACK BASE KIT
7639-351 SPEEDRACK CARGO BOX



FLEX-TEC LITE HAND GUARDS

- Legendary protection with a slender gauntlet profile optimized for backcountry riding
- Flexible backbone design
- Models with mountain handlebars require trimming
- Sold in pairs
- Includes machined aluminum mounts

8639-510 BLACK | '07-'25 Trail Handlebar, '12-'25 MTN Handlebar Models

8639-511 SKYE BLUE | (Same application as 8639-510)

8639-512 FIRE RED | (Same application as 8639-510)



FLEX-TEC HAND GUARDS

- Handles the toughest conditions while keeping your hands warm and protected
- Flexible backbone design
- Models with mountain handlebars require trimming
- Sold in pairs, includes machined aluminum mounts

8639-467 GEN 3 BLACK | '07-'25 Trail Handlebar, '12-'25 MTN Handlebar Models

8639-468 GEN 3 WHITE | (Same application as 8639-467)

8639-469 GEN 3 MEDIUM GREEN | (Same application as 8639-467)

8639-470 GEN 3 ORANGE | (Same application as 8639-467)

8639-048 GEN 2 PURPLE | (Same application as 8639-467)

REPLACEMENT PARTS

1641-488 PLASTIC STIFFENER (PAIR) | Flex-Tec and Flex-Tec Lite Hand Guards

1641-489 MOUNT ASSEMBLY (PAIR) | Flex-Tec and Flex-Tec Lite Hand Guards

1641-108 HARDWARE KIT | Flex-Tec and Flex-Tec Lite Hand Guards

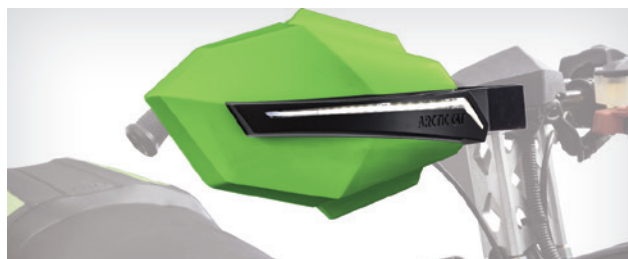


PROCROSS HAND GUARDS

- Stylish, injection-molded guards add style and protection
- Models with mountain handlebars require trimming
- Sold in pairs, includes nylon mounting arms

8639-352 BLACK | '07-'25 Trail Handlebar, '12-'25 MTN Handlebar Models

8639-353 MEDIUM GREEN | (Same application as 8639-352)



PROCROSS LIGHTED HAND GUARDS

- Stylish, injection-molded guards with LED accent lighting
- Lighted guards include LED caps and wiring
- Models with mountain handlebars require trimming
- Sold in pairs, includes nylon mounting arms

8639-354 BLACK | '07-'25 Trail Handlebar, '12-'25 MTN Handlebar Models

8639-355 MEDIUM GREEN | (Same application as 8639-354)



HAND GUARD LIGHT KIT

- Adds LED accent lighting to standard ProCross Hand Guards
- Includes LED caps and wiring
- Sold in pairs

8639-356 | Fits ProCross Hand Guards



TEAM ARCTIC HAND GUARDS

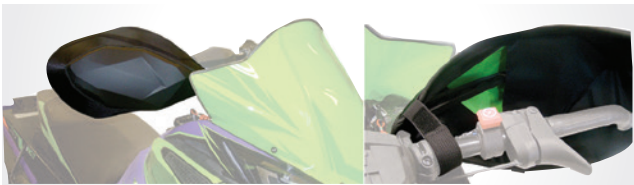
- Lightweight, injection-molded plastic guards add warmth and protection
- Models with mountain handlebars require trimming
- Sold in pairs, includes nylon mounting arms

8639-345 **BLACK** | '07-'25 Trail Handlebar, '12-'25 MTN Handlebar Models

8639-346 **MEDIUM GREEN** | (Same application as 8639-345)

8639-347 **ORANGE** | (Same application as 8639-345)

8639-348 **WHITE** | (Same application as 8639-345)



HAND GUARD EXTENSIONS

- Quick-attach guards add warmth and protection
- Sold in pairs

8639-176 | Fits Team Arctic Hand Guards



XC MUFFS

- Water and wind-resistant nylon outer with a quilted lining
- Rolls up on handlebar when not in use
- Easy-attach hook-and-loop straps with elastic grip straps

7639-995 | Universal



TOURING MUFFS

- Water and wind-resistant nylon outer with a semi-rigid design
- Folds flat for storage
- Easy-attach hook-and-loop straps with elastic grip straps
- Clear insert for visibility of controls

8639-175 | Universal **BEST SELLER**



ADJUSTABLE BAR RISER

- Adjust handlebar position for any rider or conditions in seconds without tools
- Pull handle design is easy to use and provides 2.5-in. of telescoping height adjustment in 5/8-in. increments
- Custom billet and extruded aluminum construction for long-lasting durability
- Black anodized finish with machined accents

8639-476 **4.5-7.0-in.** | '12-'25 Models With Fixed Steering Post (Except '24-'25 600/858)



BAR RISERS

- Strong extruded aluminum
- Black powder-coat finish
- NOTE:** Due to control cable and brake line restrictions, 7.5-in. and 8.5-in. risers are recommended for ProClimb and Ascender models only

8639-337 **2.0-in.** | '12-'24 Models With Fixed Steering Post

8639-338 **3.5-in.** | (Same application as 8639-337)

8639-339 **4.5-in.** | (Same application as 8639-337)

8639-340 **5.5-in.** | (Same application as 8639-337)

8639-341 **6.5-in.** | (Same application as 8639-337)

8639-342 **7.5-in.** | '24 M 8000, '12-'23 M Models With Fixed Steering Post

8639-343 **8.5-in.** | (Same application as 8639-342)



LAYDOWN STEERING POST

- Converts M models with vertical steering to a fixed, laydown system
- Includes steering post and upper support
- Accepts standard bar riser; optional heights available separately

8639-136 | '14-'24 M (Except '24 600); '14-'19 XF High Country



FIXED VERTICAL STEERING POST

- Converts M models with vertical steering to a fixed, laydown system
- Includes steering post and upper support
- Accepts standard bar riser; optional heights available separately

7639-985 | '20 Riot X 8000; '14-'19 XF High Country 6/8000; '12-'15 M; '12-'13 XF High Country 800



MOUNTAIN HANDLEBAR

- Includes over-molded grab strap, grips and heating elements

7639-983 LIGHTWEIGHT (2.0-LBS.) | '19-'25 M 6/8000

7639-984 HEAVY-DUTY (2.9-LBS.) | (Same application as 7639-983)

7639-489 LIGHTWEIGHT (2.0-LBS.) | '12-'18 M; '14-'18 XF High Country; '12-'15 XF

7639-490 HEAVY-DUTY (2.9-LBS.) | (Same application as 7639-489)



RUFFIAN GRIPS

- Soft compound grips offer better shock absorption
- Includes two 8-in. grips, cut to length -in.

5639-655 | Universal



PROXCROSS GRIPS

- Slim, comfortable design
- Includes two 6.2-in. grips

7639-398 | Universal



GRIP-IT GLUE

- Specially formulated for applying hand grips to recreational vehicles
- Bonds up to 12 sets of grips

1054-151 1 OZ | UNIVERSAL



HANDLEBAR SWITCH GUARDS

- Helps prevent accidental bumping of control switches
- Includes switch guard and adhesive

8639-097 | Universal '19-'25

5639-580 | Universal '07-'18

PROTECTION

FEATURED ON SLED:
8639-468 FLEX-TEC HAND GUARDS (WHITE)



SKID PLATE

- Full-length protection from nose to heat exchanger
- Self-reinforced composite design for exceptional impact and abrasion resistance, significantly lighter than HDPE
- Pair with Track Drive Protectors (8639-508/509) for complete underbody coverage

8639-507 CARBON | '24-'25 ZR, Riot, M 600/858 **NEW**

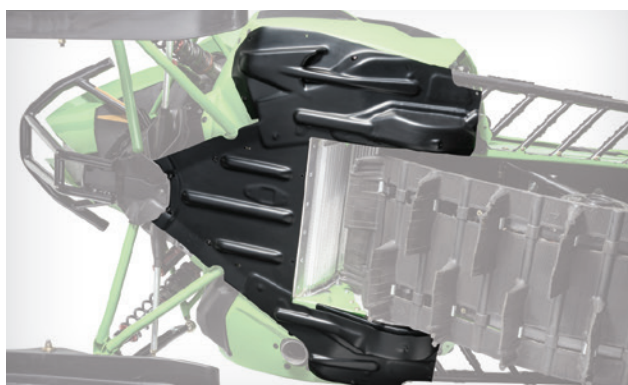


TRACK DRIVE PROTECTORS

- Protect dropcase and brake components from damage
- Self-reinforced composite design is resilient and lighter than billet
- Pair with Skid Plate (8639-507) for complete underbody coverage
- Sold in LH/RH pairs

8639-508 CARBON | '24-'25 M 600/858 **NEW**

8639-509 CARBON | '24-'25 ZR, Riot 600/858 **NEW**



SKID PLATES

- Provides impact protection from A-arms to heat exchange
 - Heavy-duty polyethylene protects vital components
- NOTE:** Some models require trimming around exhaust outlet

7639-676 BLACK | '18-'24 ZR, Norseman 6/8000; '20-'24 Riot 6/8000; '20 Riot X 8000; '18-'19 XF, Pantera 6/8000; '19 ZR, Norseman, Pantera 3000

8639-065 MEDIUM GREEN | (Same application as 7639-676)

8639-231 HYPER GREEN | (Same application as 7639-676)

7639-678 ORANGE | (Same application as 7639-676)

7639-421 BLACK | '17-'25 9000 (Except M, King Cat)

8639-427 BLACK | '18-'24 M 8000; '18-'20 M 6000; '21-'24 Riot X

8639-429 MEDIUM GREEN | (Same application as 8639-427)

7639-682 ORANGE | (Same application as 8639-427)

8639-428 HYPER GREEN | (Same application as 8639-427)

8639-389 BLACK | '21-'25 400/Blast

7639-684 BLACK | '17-'19 M, King Cat 9000

7639-425 BLACK | '17 Mountain Cat 8000

7639-720 BLACK | '14-'17 ZR, M, XF 4/5/6/8000; '14-'16 ZR, M, XF 9000; '13 F, M, XF 800/1100

7639-089 BLACK | '14-'18 ZR, XF, M, Pantera 7000

7639-090 TEAM ARCTIC GREEN | (Same application as 7639-089)



TUNNEL FLARES

- Deflects snow spray away from the rider
 - Sold in pairs
- NOTE:** Not compatible with accessory running boards

8639-505 | '24-'25 ZR, Riot, M 600/858 **NEW**

7639-969 | '14-'25 ZR; '20-'25 Riot; '12-'24 M, Riot X; '12-'19 XF; '13 F (Except '24-'25 600/858)



TANK PADS

- Provides comfort and grip
- Sold in pairs

7639-417 GEN 2 TRAIL | '18-'24 6/8000 (Except M, '21-'24 Riot X, '24 600); '17-'25 9000; '19-'25 7000; '19 3000

7639-774 GEN 2 MTN | '18-'24 M 8000; '21-'24 Riot X; '21-'25 400/Blast; '18-'20 M 6000

7639-413 GEN 1 | '14-'17 4/5/6/8000; '14-'18 3/7000; '14-'16 9000; '12-'13 800/1100

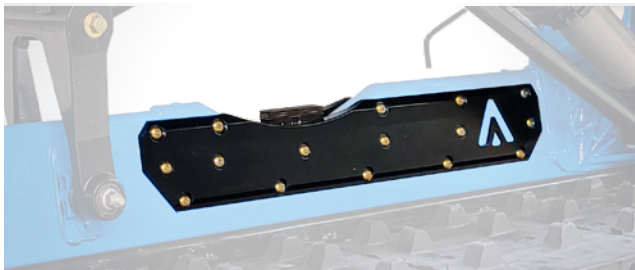


SNOWFLAP

- Make your machine stand out with a custom color snow flap

6639-398 TEAM ARCTIC GREEN | '12-'24 M; '20-'25 Riot, Riot X; '14-'25 ZR; '13-'19 XF; '13 F (Except '24-'25 600/858)

5639-843 ORANGE | '12-'24 M; '20-'25 Riot, Riot X; '14-'25 ZR; '13-'19 XF; '13 F (Except '24-'25 600/858)



ALPHA RAIL BRACE KIT

- Heavy-duty rail braces enhance the strength of the ALPHA ONE rear suspension for extreme riders
- Twice as strong as billet and half the weight (1.2-lbs. total including hardware)
- Includes braces, hardware, and instructions

8639-291 BLACK | '19-'25 M ALPHA ONE 146-165"; '25 M 400; '21-'24 RIOT X, BLAST M



TWIN RAIL BRACE KIT

- Upgrade your twin-rail M suspension with full-length Hardcore braces for outstanding durability in rough conditions
- Includes braces, hardware, and instructions

8639-170 BLACK | '17-'19 M 153-in.

8639-171 ALUMINUM | (Same application as 8639-170)

7639-147 ALUMINUM | '16 M 153-in.



TUNNEL REINFORCEMENT KIT

- Recommended when carrying fuel or heavy loads
- Includes internal tunnel braces and hardware
- Provides alignment holes for mounting Arctic Cat Tunnel Racks

8639-210 | '14-'24 M 153-154-in.; '20-'25 Riot; '20 Riot X; '17-'19 XF High Country 153-in. (Except '24-'25 600/858)

8639-211 | '14-'24 M, King Cat 162-165-in.



TETHER SWITCH

- Stops engine in the event you fall off your sled
- Attaches to your jacket D-ring

8639-074 | '18 ZR, M, XF, Norseman 6/8000; '17 ZR 6000 RS

8639-075 | '18 ZR, M, XF 9000

5639-859 | '14-'17 6/8000; '12-'13 800

5639-860 | '14-'17 5/9000; '14-'18 7000; '16-'18 3000; '12-'13 1100/1100T



YOUTH





COVER

- Custom-fit cover made from durable canvas
- Accepts low or high windshield
- Trailerable

8639-011 | '18-'25 ZR 200

8639-012 | '18-'25 ZR 120



HIGH WINDSHIELD

- Adds warmth and protection
- 10-in. high

7639-838 | '18-'25 ZR 120, 200



HANDLEBAR BAG

- Convenient, easy-attach storage

7639-715 | '18-'25 ZR 200



TUNNEL PACK

- Compact gear storage
- Quick-attach fasteners
- 16-in. L x 10-in. W x 4-in. H

7639-994 | '18-'25 ZR 200



TEAM ARCTIC HAND GUARDS

- Provides added hand protection
- Includes injection-molded guards and flexible nylon mounting brackets
- Sold in pairs

8639-213 BLACK | '18-'25 ZR 200

8639-067 MEDIUM GREEN | (Same application as 8639-213)

8639-068 WHITE | (Same application as 8639-213)



FLEX-TEC HAND GUARDS

- Adds style and warmth
- Flexible backbone design
- Sold in pairs; includes machined aluminum mounts

8639-513 GEN 3 MEDIUM GREEN | '18-'25 ZR 200

7639-911 GEN 2 MEDIUM GREEN | (Same application as 8639-513)

8639-245 GEN 2 FIRE RED | (Same application as 8639-513)

7639-912 GEN 2 PURPLE | (Same application as 7639-911)



SNOCROSS HANDLEBAR KIT

- Wider than stock handlebar with an adjustable height riser
- Five-position riser adjusts up to 4-in. higher than the standard bar
- Includes heavy-duty steering post, 27-in. W handlebar, hand warmer elements and grips
- 8639-266 converts steering to '20+ specification and includes longer tie-rod

8639-267 | '20-'25 ZR 200

8639-266 | '18-'19 ZR 200



RUNNING BOARD GRIPS

- Traction grippers provide added boot grip
- Includes aluminum foot grips and nylon edge-roll grips

7639-728 | '18-'25 ZR 200



TETHER SWITCH

- Stops engine in the event that you fall off your sled
- Attaches to your jacket D-ring

7639-732 | '18 ZR 200



SPEEDOMETER KIT

- Track your speed, mileage, and RPM
- Includes speedometer/tachometer, speed sensor and mounts

7639-927 | '18-'25 ZR 200



HEAVY-DUTY SUSPENSION KIT

- Heavier suspension springs for larger riders
- 7639-887 includes ski shock and rear torsion springs
- 8639-208 includes rear torsion springs only

8639-208 | '21-'25 ZR 200

7639-887 | '18-'20 ZR 200



SPEEDWERX CLUTCH KITS

- Designed and calibrated for increased performance
- Includes springs, rollers and a custom helix

8639-121 | '18-'25 ZR 200 (Rider weight under 150-lbs.)

8639-125 | '18-'25 ZR 200 (Rider weight over 150-lbs.)



ENGINE PERFORMANCE KIT

- Increase the power and responsiveness of your 120 engine
- Includes performance camshaft, valve springs, carburetor jets and gaskets
- Complies with ISR stock class racing rules

6639-883 | '14-'25 ZR 120; '10-'13 Sno Pro 120



SKID WHEEL KIT

- Adds wheels to the rear skid for use in low snow conditions
- Includes wheels and mounts

NOTE: Not recommended for summer use

7639-963 | '18-'25 ZR 200

7639-967 | '18-'25 ZR 120



CARBIDE WEARBARS

- Hardweld carbide wearbars provide excellent durability and steering control on hardpack snow and ice
- Sold in pairs

7639-889 4-IN. CARBIDE | '18-'25 ZR 120, 200

7639-890 6-IN. CARBIDE | '18-'25 ZR 120, 200



ICE TRACK

- This track features 0.5-in. height lugs and is premarked for studs for riding or racing on ice
- Compatible with Traction Kit (7639-900), Tunnel Protector Kit (7639-971)

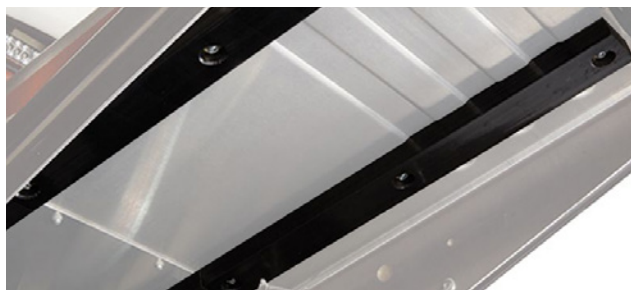
3602-220 | '18-'25 ZR 200



TRACTION KIT

- Designed specifically for use with Ice Track (3602-220)
- Requires Tunnel Protector Kit (7639-971)
- Includes tunnel studs, support plates, and nuts

7639-900 72/PK | '18-'25 ZR 200



TUNNEL PROTECTOR KIT

- Required when installing Traction Kit (7639-900)
- Includes tunnel protectors, mounting hardware, and instructions

7639-971 | '18-'25 ZR 200

PERFORMANCE

FEATURED ON SLED:
8639-511 FLEX-TEC LITE HAND GUARDS (SKYE BLUE)



SHOCKS



FOX® ZERO QS3

- Calibrated for aggressive trail riding and ditch banging
- Quickly change between 3 specifically calibrated settings (soft, medium and firm) with the flip of a switch to adapt to varying trail conditions
- Fully rebuildable and revalveable

8639-308 FRONT (PAIR) | '14-'25 ZR; '20-'25 Riot; '15-'25 Pantera; '12-'19 XF; '12-'13 F 42-in. (EXCEPT '24-'25 600/858)

8639-319 REAR | '14-'23 ZR 129-in.

8639-320 REAR | '14-'25 ZR; '14-'19 XF 137-in.

8639-323 REAR | '20-'25 Riot; '20 Riot X 146-in.



FOX ZERO QS3R

- Calibrated for aggressive trail riding and ditch banging
- Quickly change between 3 specifically calibrated settings, soft, medium and firm, with the flip of a switch to adapt to varying trail conditions
- Adjustable rebound setting allows your shock to recover from bigger hits quickly enough to absorb consecutive hits and provides increased traction
- Fully rebuildable and revalveable

8639-309 FRONT (PAIR) | '14-'25 ZR; '20-'25 Riot



FOX FLOAT® QS3

- Calibrated for mountain performance riding
- Quickly change between 3 specifically calibrated settings (soft, medium and firm) with the flip of a switch to adapt to varying conditions
- Infinitely adjustable air spring
- Fully rebuildable and revalveable

8639-312 FRONT (PAIR) | '16-'24 ProClimb M 36-in.

FOX FLOAT 3 QSL

- Calibrated for mountain performance riding
- Quickly change between 2 specifically calibrated settings and a third position climb lockout function
- Infinitely adjustable air spring
- Fully rebuildable and revalveable

8639-325 REAR | '16-'19 M 153, 162-in.



FOX FLOAT GUARD KIT

- Protect your Fox Float air shocks from damage and extend the life of critical seals and components
- Simple installation, includes LH and RH guards and hardware
- Compatible with Float 1/2/3, Evol, and Evol R

7639-640 BLACK | Fox Float 1/2/3/EVOL/EVOL R Shocks



ARCTIC CAT IFP

- Soft calibration for comfortable trail riding
- An affordable upgrade for models with hydraulic twin tube shocks
- Fully rebuildable and revalveable

8639-306 FRONT | '14-'24 ZR; '20-'24 Riot; '18-'19 Pantera; '12-'19 XF; '12-'13 F 42-in. 6/8000 (Except '24 600)

8639-307 FRONT | '14-'25 ZR; '23-'25 Riot; '15-'25 Pantera; '12-'19 XF; '12-'13 F 42-in. 3/7/9000

8639-317 FRONT | '14-'23 ZR 129-in.

8639-318 FRONT | '14-'25 ZR; '14-'19 XF 137-in.

ARCTIC CAT IFP PACKAGES

- Upgraded suspension package offers improved ride and consistent performance over bumpy terrain
- Internal Floating Piston (IFP) gas shocks feature adjustable preload and are fully rebuildable and revalveable
- Includes (4) shocks and Instructions

8639-485 | '25 ZR 400; '21-'24 Blast ZR

8639-487 | '21-'23 Blast M (Except '23 Blast M LTD)

8639-486 | '25 Riot, Norseman 400; '22-'24 Blast XR; '21-'24 Blast LT

SHOCK OPTIONS

SKI	ARCTIC CAT 1.5 IFP	FOX 1.5 ZERO QS3	FOX 1.5 ZERO QS3R	FOX FLOAT QS3
'14-'24 ZR; '20-'24 Riot; '18-'19 Pantera; '12-'19 XF; '12-'13 F 42-in. 6/8000 (EXCEPT '24 600)	8639-306	8639-308	8639-309	—
'14-'24 ZR; '23-'24 Riot; '15-'24 Pantera; '12-'19 XF; '12-'13 F 42-in. 3/7/9000	8639-307	8639-308	8639-309	—
'16-'24 PROCLIMB M 36-in.	—	—	—	8639-312

REAR ARM	ARCTIC CAT 2.0 IFP	FOX 2.0 ZERO QS3	FOX FLOAT 3 QSL
'14-'23 ZR 129-in.	8639-317	8639-319	—
'14-'23 ZR; '17-'23 Thundercat; '14-'19 XF 137-in.	8639-318	8639-320	—
'20-'23 Riot; '20 Riot X 146-in.	—	8639-323	—
'16-'19 M 153, 162-in.	—	—	8639-325

QS3

(3 SETTING QUICK POSITION SWITCH)

Choose from three specifically calibrated ride control settings to tune in your own personal ride and handling setting. The QS3 supplies a wide range of adjustments while simply allowing the user to make a change quickly without tools.

REBOUND DAMPING

Rebound damping controls the rate at which the shock returns after it has been compressed. The proper rebound setting is a personal preference and changes with rider weight, riding style and conditions.



TIGER SLIDE WEAR STRIP

- High-performance slide rail wear strips provide superior wear resistance and improved track durability in hardpack conditions
- Advanced, high-lubricity, ultra-low friction inserts are angled at 60° for continuous contact with track clips
- Molded white and black swirl pattern for a custom look
- Narrow profile for universal fit, easily cut to length for any application
- Sold individually

8639-422 WHITE/BLACK | Universal 121-165-in.



ICE SCRATCHERS

- Helps prevent wear strip overheating on ice and hardpack
- Use caution when operating sled in reverse
- Some models require the removal of forward idler wheels
- Sold in pairs

5639-897 | UNIVERSAL TWIN RAIL

1704-734 LH / 1704-735 RH | Fits 5639-897 Ice Scratchers

REPLACEMENT PARTS

5639-941 -HARDWARE KIT | Fits 5639-897 Ice Scratchers



SPEEDWERX HYPERSHIFT CLUTCH KITS

- Developed and trusted by Team Arctic racers and designed for the demands of the high-performance rider
- Provides smooth, hard-pulling acceleration with excellent back shifting and throttle response
- Some models may see improved top speed
- Kits vary by application, but most include adjustable machined weights, H5 alloy primary and secondary springs, and a custom-cut helix
- Calibrated for 0-5000-ft elevation and up to 1.35-in. track lug height unless otherwise indicated

8639-541 ADAPT | '22-'24 ZR 8000

8639-359 TEAM | '20-'21 ZR 8000

8639-107 TEAM | '18-'19 ZR 8000

7639-856 TEAM | '17 ZR 8000

4639-615 ARCTIC | '14-'15 ZR, XF 8000; '12-'13 F, XF 800

8639-542 ADAPT | '24-'25 ZR 6000

8639-540 ADAPT | '22-'23 ZR 6000

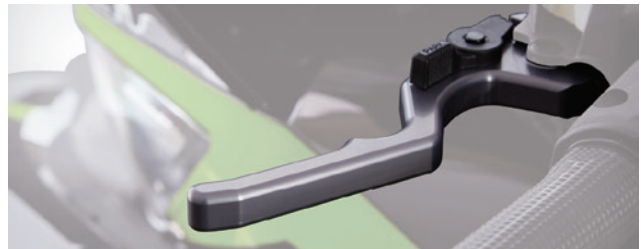
8639-358 TEAM | '18-'21 ZR 6000

7639-855 TEAM | '17 ZR 6000

7639-863 TEAM | '18-'19 M 8000 (6-8,000 FT)

7639-877 TEAM | '16-'17 M 8000 (3-6,000 FT)

7639-859 TEAM | '16-'17 M 8000 (8-10,000 FT)



BILLET BRAKE LEVER

- Comfortable, custom design with an anodized finish
- Accepts production park brake lock

8639-051 BLACK | Universal '19-'25

8639-052 GRAY | (Same application as 8639-051)

8639-053 PURPLE | (Same application as 8639-051)

8639-229 BRONZE | (Same application as 8639-051)



SNO PRO® BRAKE LEVER

- Aluminum lever with a curved tip design
- Accepts production park brake lock

8639-099 BLACK | Universal '19-'25

2602-770 BLACK | Universal '12-'18



HEAVY-DUTY BRAKE DISC

- Increase stopping performance with cross-drilled, waved Hayes brake rotor
- Fits models with 34T splined driveshaft
- Standard on RR and R-XC models

2602-720 | '14-'25 ZR; '20-'25 Riot, Riot X; '21-'25 Blast; '12-'25 M; '12-'19 XF; '12-'13 F



EXTREME-DUTY BRAKE DISC

- Engineered for the extreme demands of snocross racing, this Hayes brake disc provides unmatched stopping power
- Cross-drilled, floating rotor design and stainless steel construction for superior heat dissipation and consistent performance
- Fits models with 34T splined driveshaft
- Requires Racing Brake Pads (3603-017)

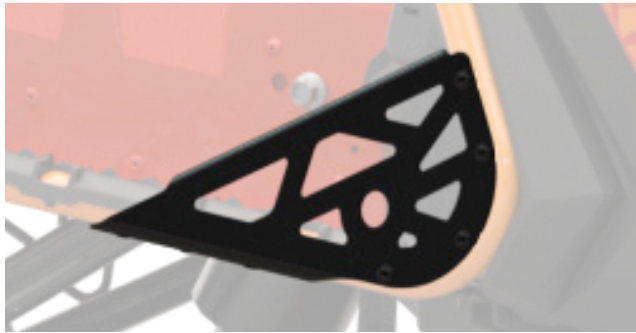
3602-020 | '14-'25 ZR; '20-'25 Riot, Riot X; '21-'25 Blast; '12-'25 M; '12-'19 XF; '12-'13 F



RACING BRAKE PAD SET

- Improve brake system performance and extend wear life with metallic, heat-resistant brake pads
- Includes 2 pads and 1 retaining pin

3602-017 | '14-'25 ZR; '20-'25 Riot, Riot X; '21-'25 Blast; '12-'25 M; '12-'19 XF; '12-'13 F



RUNNING BOARD STIRRUPS

- Aluminum molded braces enclose footwell area to provide improved cornering control for aggressive riders
- Includes LH and RH stirrups, hardware, and instructions
- Not compatible with accessory running boards

8639-650 | '24-'25 ZR, Riot 600/858 **NEW**



HARDCORE RUNNING BOARDS

- Aluminum tube running boards offer aggressive grip traction, increased stiffness, and 4-lbs. weight reduction
- Replaces factory running boards with no cutting or permanent modification required
- Available in two versions optimized for on or off-trail models
- Durable, factory-matched powder-coat finish for a custom look
- Accepts factory or accessory rear bumper
- Includes RH and LH boards, hardware, and instructions

8639-609 BLACK | '24-'25 M 600/858 **NEW**

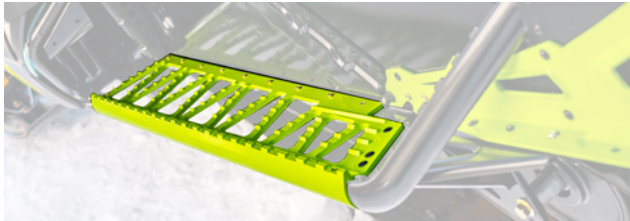
639-00013 MEDIUM GREEN | (Same application as 8639-609) **NEW**

8639-610 BLACK | '24-'25 ZR, Riot 600/858 **NEW**

8639-466 SKYE BLUE | (Same application as 8639-610)

8639-374 MEDIUM GREEN | (Same application as 8639-610)

8639-474 FIRE RED | (Same application as 8639-610)



ASCENDER RUNNING BOARDS

- Rugged, extruded aluminum boards add strength and reduce snow buildup
- Aggressive edge grip traction
- Installation requires removal of stock running boards
- Includes LH and RH boards
- 6.5-lbs.

7639-437 BLACK | '18-'24 M; (Except '24 600) '21-'24 Riot X; '17-'19 Mountain Cat, King Cat

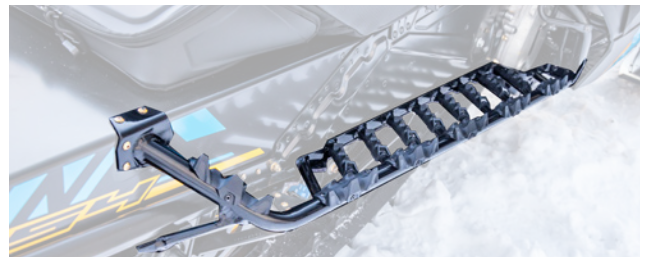
8639-078 MEDIUM GREEN | (Same application as 7639-437)

8639-271 HYPER GREEN | (Same application as 7639-437)

8639-079 PURPLE | (Same application as 7639-437)

7639-435 BLACK | '20-'25 Riot; (Except '24-'25 600/858) '20 Riot X; '12-'19 XF High Country; '12-'17 M (Except Mountain Cat)

7639-436 ALUMINUM | (Same application as 7639-435)



PRO MTN RUNNING BOARDS

- Aluminum running boards feature an open-tube design that reduces snow buildup
- Includes aggressive, injection-molded rail grippers
- 6.25-in. front stirrup width
- Front support tube allows a more forward foot position when sidehilling
- Installation requires removal of stock running boards
- Includes LH and RH boards and rail grippers
- Accepts factory or accessory rear bumper
- 8.5-lbs.

8639-070 BLACK | '12-'24 M; '20-'25 Riot; (Except '24-'25 600/858) '20 Riot X; '12-'19 XF High Country; '17-'19 King Cat

8639-071 MEDIUM GREEN | (Same application as 8639-070)

8639-274 HYPER GREEN | (Same application as 8639-070)

7639-441 TEAM ARCTIC GREEN | (Same application as 8639-070)

7639-442 ORANGE | (Same application as 8639-070)

7639-443 WHITE | (Same application as 8639-070)

8639-275 DYNAMIC CHARCOAL | (Same application as 8639-070)

REPLACEMENT PARTS

7639-955 OUTER CLEAT (PAIR) | Fits Pro MTN Running Boards

7639-956 INNER CLEAT (PAIR) | Fits Pro MTN Running Boards

1641-388 HARDWARE KIT | Fits Pro MTN Running Boards



RUNNING BOARD TRACTION

- Aluminum running board grippers provide added boot traction
- Includes eight grips with rivets

8639-391 | Universal



TUNNEL GRIPS

- Raised, rubberized grip features provide additional boot traction on tunnel sides for aggressive riding or racing
- Includes 15.5-in. x 4.25-in. flexible, adhesive-backed panels (Pair)
- Trimmable to fit any machine

5639-814 CLEAR | Universal



ASCENDER PRO SEAT

- Lightweight mountain seat provides improved comfort and function
- 1-in. narrower and 1-in. taller than the standard seat
- Added support at the rear of the seat for taller riders
- Includes black seat assembly and powder-coated aluminum seat frame
- Fits 6/8000 non-electric start models with a short tank and seat

8639-168 ALUMINUM | '18-'24 M 8000; '18-'20 M 6000 (Non-ES Models)



LED HEADLIGHT

- Delivers significantly greater performance than a halogen system
- When the high beam is activated, the low beam also stays on to deliver a light pattern with great range and width
- Features stylish accent lighting
- Includes headlight assembly and wiring harness
- Fits Gen 2 ProCross models with halogen headlight

7639-989 | '19-'24 Norseman 6/8000; '20-'23 Riot; '19-'20 ZR 6/8000; '19-'20 M; '19 XF High Country

0709-096 | '18 ZR, M, XF, Norseman, Pantera 6/8000



PANEL VENT KIT

- Side panel vents allow cool air into the clutches and exhaust
- Laser cut aluminum grills with stainless steel mesh screens to keep the snow out
- Sold as a pair

7639-972 GEN 2 PROCROSS TRAIL | '18-'24 6/8000 (Except M, '21-'24 Riot X); '17-'25 9000; '19-'25 7000; '19 3000

7639-974 GEN 2 PROCLIMB MTN | '18-'24 M 8000; '21-'24 Riot X; '21-'25 400/Blast; '18-'20 M 6000



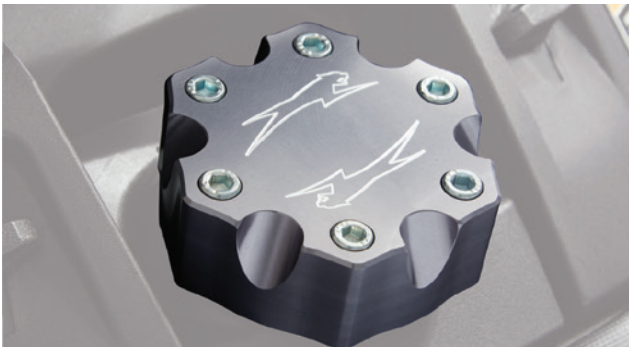
PRO MTN CAP

- Lightweight, stylish billet aluminum

7639-844 BLACK | Universal '12-'25

8639-049 PURPLE | (Same application as 7639-844)

8639-228 BRONZE | (Same application as 7639-844)



PROCCROSS CAP

- Billet aluminum for a custom look

7639-405 BLACK | Universal '12-'25



BILLET RECOIL HANDLE

- Billet aluminum for a custom look

7639-408 ALUMINUM | Universal

7639-924 GRAY | Universal



NUMBER PLATE KIT

- Competition-legal racing number plates
- Made of molded plastic with excellent cold weather durability
- Includes RH plate, LH plate, and rivets

8639-127 | Universal

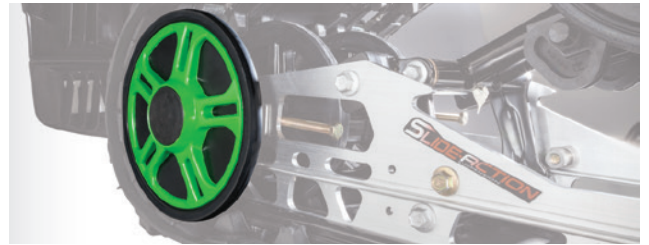


FOUR WHEEL KIT

- Replaces tri-hub rear axle wheels and adds outside wheels
- Helps keep track in proper alignment and spread the traction load evenly
- Includes wheels, machined aluminum spacers and hardware

7639-865 7.12-IN. WHEELS | '14-'18 ZR 129-in., '13 F (Except RR)

7639-866 8-IN. WHEELS | '16-'18 ZR, Thundercat 137-in.; '14-'18 XF; '16-'18 M 141-in.; '12-'18 M 153-162-in.



REAR WHEEL KIT

- Outside idler wheels help keep track in proper alignment and distribute load evenly
- Recommended when adding studs to the models listed
- Includes wheels, spacer blocks and hardware
- Sold in pairs

6639-621 BLACK | '16-'18 ZR, XF Cross Country 137-in.; '16-'19 M, XF High Country 141-in.; '12-'18 M 153-162-in.

7639-883 MEDIUM GREEN | (Same application as 6639-621)

6639-622 TEAM ARCTIC GREEN | (Same application as 6639-621)

6639-617 BLACK | '14-'18 ZR; '12-'13 F 128-129-in.

6639-618 TEAM ARCTIC GREEN | (Same application as 6639-617)

6639-619 ORANGE | (Same application as 6639-617)



BILLET AXLE WASHERS

- Billet aluminum washers give your 2-wheel rear axle a custom look
- Sold in pairs

7639-409 BLACK | '14-'18 ZR; '12-'18 XF; '09-'18 M; '12-'13 F (Except RR)

7639-410 ALUMINUM | (Same application as 7639-409)



RAIL CAP WHEEL KIT

- Helps prevent track from contacting the slide-rail end caps
- Includes two 2.5-in. x 0.787-in. idler wheels, rail caps and a heavy-duty axle shaft

7639-987 | '09-'19 M 141, 153, 162-in.; '20-'25 Riot; '20 Riot X; '12-'19 XF 141-153-in.



WHEEL KITS

- Wheels provide increased performance in low snow conditions
- Includes two 5.63-in. wheels with mounts and hardware

6639-808 | '15-'18 ZR 129-in.; '16-'18 ZR 137-in.; '14-'19 XF 137-in.

BACKCOUNTRY ACCESS



The Float avalanche airbag system is designed to keep you at or near the surface during an avalanche. It is one of the most proactive snow safety tool you can carry into avalanche terrain. BCA Float avalanche airbags are both affordable and easily reusable.

- > Features a small 2,700-psi (186 bar) compressed-air cylinder, single-chamber 150-liter airbag and super-efficient venturi system
- > Trigger is located on right shoulder strap, allowing you to keep your right hand on the throttle
- > Includes pressurized air cylinder
- > Hazardous-shipping charges may apply



FLOAT MTNPRO 2.0 VEST

- Lightweight, protective vest with airbag
- Full front, side and back protection
- Two sizes to fit most riders
- Float 2.0 System
- Shovel not included
- 8.6-lbs., 20-liter capacity

8639-268 | M/L

8639-269 | XL/XXL



FLOAT 15 TURBO

- Internal tool pocket for probe
- External shovel carry
Shovel not included
- Float 2.0 System
- 6.1-lbs., 15-liter capacity

8639-111



FLOAT 25 TURBO™

- Internal tool pocket for probe
- External shovel carry
- Shovel not included
- Float 2.0 System
- 6.9-lbs., 25-liter capacity

8639-112



FLOAT 2.0 AIR CYLINDER

- Replacement pressurized air canister

1641-374

In an on-mountain emergency, these easy-to-use and efficient transceivers are a necessity among your supplies.



TRACKER 3

- BCA's most efficient, progressive design and most precise pinpointing
- Instantaneous, real-time display
- Small and light with three antennas for no-nonsense multiple burial searching
- Includes harness

6639-406



TRACKER S

- Simplicity is speed — our stripped-down, more affordable transceiver
- All the performance of the T3, without motion-sensing or upgradeable software

8639-113

BCA Quick-Lock probes save valuable seconds when time matters. They offer the easiest and fastest assembly on the market, all while freeing up valuable storage space in your pack.



STEALTH 270

- High-strength aluminum probe with laser etched depth markings for added durability
- Collapsed 17.7-in., extended 8-ft 10-in.
- 10.4-oz.

6639-444

Strong group communication is the key to any successful day riding the mountains. Find separated riders, communicate plans and share observations in real time with the BC Link™ communication system. The Smart Mic user interface is located at your fingertips, meaning you never need to dig your 2-way radio out of your pack to change settings. Glovefriendly controls include: on/off and volume control, channel control, push-to-talk button, loudspeaker, earphone jack and battery indicator. Rechargeable lithium ion battery pack provides up to 4 days of battery life in cold weather. BC Link 2-way radios operate on 22 FRS GMRS channels + 121 sub-channels to ensure minimal interference.



BC LINK 2.0 RADIO

- 2 watts for increased usable range

8639-114 | ONE SIZE



BC LINK 1.0 RADIO

- 1 watt

7639-466



BC LINK REPLACEMENT BATTERY

- Fits BC Link 1.0 Radio

1641-117



DOZER 1T SHOVEL

- Extendable-handle shovel with an amazing strength-to-weight ratio
- Low-profile, stomp edge blade on an ovo-concave shaft with an ergonomic grip
- Extends up to 30-in. long, 9-in. X 10.5-in. blade, 1.2-lbs.

8639-455



A-2 EXT SHOVEL

- An integrated shovel system with a larger blade and extendable handle
- Includes an 11.4-in. snow/wood saw stowed inside the grip
- Extends up to 30.5-in. long, 10-in. x 11-in. blade, 1.9-lbs.

5639-786



D-2 EXT SHOVEL

- Converts from a traditional shovel to a hoe
- Move more snow without lifting it
- Includes a 6.5-in. snow/wood saw stowed inside the shaft
- Extends to 32-in. long, 10-in. x 11-in. blade, 2.1-lbs.

7639-765



RATTLER

- Maximizes the pulling force of your body
- Made of strong stretch cords bundled in a corrugated vinyl tube
- Safety strap hook attaches to the ski of the stuck sled with a grab handle on the other end

5639-639



COBRA™

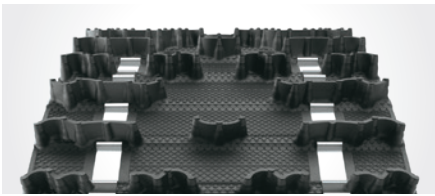
- Sled-to-sled pulling tool
- Made of stretch cords bundled in a corrugated vinyl tube with a hook on both ends
- Creates 300 to 400-lbs. of static pulling force

5639-640



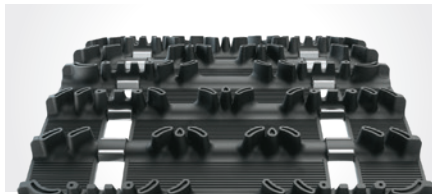
FEATURED ON SLED:
8639-468 FLEX-TEC HAND GUARDS (WHITE)
8639-496 ATACH 14L TUNNEL PACK

TRACKS



COBRA

- Cupped lugs for superior handling, acceleration and braking on soft, loose trails
- Excellent off-trail performance without sacrificing top speed



HACKSAW™

- Crescent lug design with recessed tips and cutting edges provides grip on hard-packed trails
- Narrow lug base provides less rolling resistance for maximum top speed



POWER CLAW™

- This lightweight single-ply track sets the standard for deep snow performance
- Stagger-set, curved-forward paddle towers won't fold over or take a set
- Available in 2.25-in. and 2.6-in. lug heights with 80 or 85 durometer



3-IN. POWER CLAW

- Full 3-in. lug height brings maximum control to even the deepest snow
- Lightweight single-ply track features stagger-set, curved-forward paddle towers that won't fold over or take a set
- 80 durometer hardness rating for rugged performance
- Requires 7-tooth driveshaft



RIPSAW™

- Aggressive angled lug profiles for outstanding traction on groomed trails
- Rigid lugs provide excellent durability



RIPSAW II

- Lug design combines the best features of Ripsaw and Cobra tracks for excellent all-around performance
- Less track noise for quieter operation on hard-packed trails



BACKCOUNTRY X

- Snocross-inspired, arched lugs are staggered for outstanding traction in soft snow
- Rigid lug support columns for on- and off-trail performance



HURRICANE

- Perfect balance between deep snow technology and trail-gripping adrenaline
- 1.75-in. cupped profile design inspired by mountain track lug geometry



ALPHA ONE TRACK + DRIVER UPDATE KIT

- Upgrade the durability of your Alpha One-equipped machine with reinforced track construction and revised drive sprockets
- Includes updated 2-Window Track and Track Drive Assembly

0728-277 15 X 146 X 2.6-in. (2.86 P) | *21 Riot X 146-in.

0728-278 15 X 154 X 2.6-in. (2.86 P) | *21 M 154-in.

0728-280 15 X 154 X 3.0-in. (3.5 P) | *19-'22 M 154-in.

0728-279 15 X 165 X 3.0-in. (3.5 P) | *19-'22 M 165-in.

PART NUMBER	DESCRIPTION	DIMENSION	CLIPS
PERFORMANCE 2.52 P			
3602-294	HACKSAW (SINGLE-PLY) - 80/70 DURO	14 x 121 x 1.00-in.	CLIPPED EVERY 3RD
2602-835	RIPSAW - 80/70 DURO	15 X 128 X 1.50-in.	CLIPPED EVERY 3RD
PERFORMANCE 2.86 P			
2602-575	RIPSAW II - 80/70 DURO	15 x 129 x 1.00-in.	CLIPPED EVERY OTHER
2602-576	RIPSAW - 80/70 DURO	15 x 129 x 1.25-in.	CLIPPED EVERY OTHER
2602-491	COBRA - 80/70 DURO	15 x 129 x 1.35-in.	CLIPPED EVERY OTHER
2602-865	SNO PRO - 80/70 DURO	15 x 129 x 1.70"	CLIPPED EVERY OTHER
3602-202	RIPSAW - 80/70 DURO	15 x 137 x 1.00-in.	FULLY CLIPPED
3602-304	RIPSAW - 80/70 DURO NEW	15 x 137 x 1.25-in.	FULLY CLIPPED
2602-627	RIPSAW II - 80/70 DURO	15 x 137 x 1.25-in.	CLIPPED EVERY OTHER
3602-303	COBRA - 80/70 DURO	15 x 137 x 1.35-in.	FULLY CLIPPED
2602-909	COBRA - 80/70 DURO	15 x 137 x 1.60-in.	CLIPPED EVERY OTHER
2602-669	BACKCOUNTRY X - 80/70 DURO	15 x 137 x 1.75-in.	CLIPPED EVERY OTHER
2602-933	COBRA - 80/70 DURO	15 x 146 x 1.35-in.	FULLY CLIPPED
3602-237	COBRA - 80/70 DURO	15 x 146 x 1.60-in.	FULLY CLIPPED
3602-397	HURRICANE	15 x 146 x 1.75-in.	CLIPPED EVERY OTHER
3602-240	CHALLENGER - 80 DURO	15 x 146 x 2.00-in.	FULLY CLIPPED
TOURING 2.52 P			
2602-528	HACKSAW - 80/70 DURO	15 x 136 x 1.00-in.	CLIPPED EVERY 3RD
TOURING 2.86 P			
2602-521	RIPSAW II - 80/70 DURO	15 x 146 x 1.00-in.	CLIPPED EVERY 3RD
2602-512	RIPSAW - 80/70 DURO	15 x 146 x 1.25-in.	CLIPPED EVERY 3RD
3602-067	COBRA (SINGLE-PLY) - 80/70 DURO	15 x 154 x 1.60-in.	CLIPPED EVERY OTHER
MOUNTAIN 2.86 P			
3602-372	CHALLENGER/ALPHA - 80 DURO	15 x 146 x 2.00-in.	CLIPPED EVERY OTHER (2-WINDOW)
3602-371	CROSS COUNTRY/ALPHA (SINGLE-PLY) - 80 DURO	15 x 146 x 2.60-in.	CLIPPED EVERY OTHER (2-WINDOW)
3602-370	CROSS COUNTRY/ALPHA (SINGLE-PLY) - 80 DURO	15 x 154 x 2.60-in.	CLIPPED EVERY OTHER (2-WINDOW)
MOUNTAIN 3.0 P			
2602-169	COBRA (SINGLE-PLY) - 80 DURO	15 x 141 x 1.35-in.	CLIPPED EVERY OTHER
2602-170	COBRA (SINGLE-PLY) - 80 DURO	15 x 141 x 1.60-in.	CLIPPED EVERY OTHER
3602-143	POWER CLAW (SINGLE-PLY) - 80 DURO	15 x 141 x 2.25-in.	CLIPPED EVERY OTHER
3602-141	POWER CLAW (SINGLE-PLY) - 80 DURO	15 x 141 x 2.60-in.	CLIPPED EVERY OTHER
3602-145	BACKCOUNTRY X (SINGLE-PLY) - 80/70 DURO	15 x 153 x 1.75-in.	CLIPPED EVERY OTHER
3602-142	POWER CLAW (SINGLE-PLY) - 80 DURO	15 x 153 x 2.25-in.	CLIPPED EVERY OTHER
2602-399	POWER CLAW (SINGLE-PLY) - 85 DURO	15 x 153 x 2.25-in.	CLIPPED EVERY OTHER
3602-140	POWER CLAW (SINGLE-PLY) - 80 DURO	15 x 153 x 2.60-in.	CLIPPED EVERY OTHER
2602-482	POWER CLAW (SINGLE-PLY) - 85 DURO	15 x 153 x 2.60-in.	CLIPPED EVERY OTHER
3602-138	POWER CLAW (SINGLE-PLY) - 80 DURO	15 x 153 x 3.00-in.	CLIPPED EVERY OTHER
2602-483	POWER CLAW (SINGLE-PLY) - 80 DURO	15 x 162 x 2.60-in.	CLIPPED EVERY OTHER
2602-484	POWER CLAW (SINGLE-PLY) - 85 DURO	15 x 162 x 2.60-in.	CLIPPED EVERY OTHER
3602-137	POWER CLAW (SINGLE-PLY) - 80 DURO	15 x 162 x 3.00-in.	CLIPPED EVERY OTHER
MOUNTAIN 3.5 P			
3602-368	POWER CLAW/ALPHA (SINGLE-PLY) - 80 DURO	15 x 154 x 3.00-in.	CLIPPED EVERY OTHER (2-WINDOW)
3602-369	POWER CLAW/ALPHA (SINGLE-PLY) - 80 DURO	15 x 165 x 3.00-in.	CLIPPED EVERY OTHER (2-WINDOW)
UTILITY 2.52 P			
2602-314	RIPSAW (SINGLE-PLY) - 80/70 DURO	15 x 151 x 1.25-in.	CLIPPED EVERY OTHER
UTILITY 2.86 P			
2602-639	(SINGLE-PLY) - 60 DURO	20 x 154 x 1.375-in.	CLIPPED EVERY OTHER
3602-058	BEARCLAW (SINGLE-PLY) - 80/70 DURO	20 x 154 x 1.375-in.	CLIPPED EVERY OTHER
3602-059	BEARCLAW (SINGLE-PLY) - 80/70 DURO	20 x 154 x 1.60-in.	CLIPPED EVERY OTHER

HANDLING & TRACTION



FEATURED ON SLED:
8639-468 FLEX-TEC HAND GUARDS (WHITE)
8639-496 ATACH 14L TUNNEL PACK



PROCROSS-6 SKIS

- 6-in. width for precise on-trail handling
- Includes pair of skis, handles, mounting hardware, and 4-in. carbide wearbars

6639-206 BLACK | Universal '12-'25



PROCLIMB-7 G2 SKIS

- 7-in. width and deep keel for off-trail carving control
- Includes pair of skis, handles, mounting hardware, and 4-in. carbide wearbars

8639-064 BLACK | Universal '12-'25



PROUTE-10/8 SKIS

- 8-in. width and 10-in. tip for ultimate flotation
- Includes pair of skis, handles, mounting hardware, and 4-in. carbide wearbars

7639-032 BLACK | Universal '12-'25



SKI HANDLES

- Personalize your Arctic Cat skis with colored handles
- Sold in pairs

7639-820 MEDIUM GREEN | '05-'25 Saddleless Skis

8639-243 HYPER GREEN | (Same application as 7639-820)

6639-388 TEAM ARCTIC GREEN | (Same application as 7639-820)

5639-744 ORANGE | (Same application as 7639-820)

6639-095 WHITE | (Same application as 7639-820)

8639-047 PURPLE | (Same application as 7639-820)

3639-781 GREEN | '95-'08 Aluminum Saddle Skis

3639-865 ORANGE | (Same application as 3639-781)



36-IN. FRONT SUSPENSION KIT

- Make off-trail handling effortless with the ultra-nimble 36-in. Arctic Mountain Suspension™ (AMS) ski stance
- Includes black upper and lower A-arms, tie-rods, hardware, and instructions
- 8639-471 also includes twin tube coil-over shocks

8639-471 | '25 M400; '21-'24 Blast M; '21 Blast M LTD

8639-477 (NO SHOCKS)

| '16-'24 ProClimb, Ascender Models With 36-in. Ski Stance (Replacement)



REAR SUSPENSION SPRINGS

- Heavy-duty torsion springs provide a firmer ride and help prevent the rear suspension from bottoming out under high load
- Light-duty torsion springs provide a smoother, softer ride quality for less-aggressive riders
- Requires LH and RH spring

8639-544 **HEAVY-DUTY (PAIR)** | '24-'25 ZR 600/858 129-in.

8639-545 **HEAVY-DUTY (PAIR)** | '24-'25 ZR 600/858 137-in.

8639-546 **HEAVY-DUTY (PAIR)** | '24-'25 Riot 600/858

8639-417 **HEAVY-DUTY (PAIR)** | '25 ZR 400; '21-'24 Blast ZR

1704-504/505 **HEAVY-DUTY** | '25 Riot, Norseman 400; '22-'24 Blast XR; '21-'24 Blast LT

1704-710/711 **HEAVY-DUTY** | '16-'25 ZR, XF 137-in.; '20-'25 RIOT; '15-'20 Lynx 2000 [Except '24-'25 600/858]

2704-560/561 **HEAVY DUTY** | '17-'19 ZR, XF 6/8/9000 RR/SNO PRO

1704-842/843 **HEAVY-DUTY** | '15-'20 Bearcat 2000 XT

3704-726/727 **LIGHT-DUTY** | '16-'25 ZR, XF 137-in.; '20-'25 Riot [Except '24-'25 600/858]

1704-576/577 **LIGHT-DUTY** | '15-'20 Lynx 2000

1704-562/563 **LIGHT-DUTY** | '15-'20 Bearcat 2000 XT



SINGLE RUNNER

- Ideal on ice and hardpack, but works well anywhere
- May provide a noted speed increase compared to a dual wearbar
- Hardweld wearbars have a 7/16-in. host bar
- Carbide wearbars have a 1/2-in. host bar
- Sold in pairs

3639-309 **HARDWELD WEARBAR (PAIR)** | '05-'25 Saddleless Skis

3639-310 **4-IN. CARBIDE (PAIR)** | (Same application as 3639-309)

3639-311 **6-IN. CARBIDE (PAIR)** | (Same application as 3639-309)

3639-312 **8-IN. CARBIDE (PAIR)** | (Same application as 3639-309)



ACE™ WEARBARS

- Utilizes a preformed, square steel bar with a tall, aggressive profile
- Provides excellent control
- Sold in pairs

6639-850 **6-IN. CARBIDE (PAIR)** | '05-'25 Saddleless Skis

6639-799 **8-IN. CARBIDE (PAIR)** | (Same application as 6639-850)



SHAPER™ WEARBARS

- Offers more precise turning than conventional wearbars
- 20% lighter than round wearbars
- Sold in pairs

4639-949 **4.5-IN. CARBIDE (PAIR)** | '05-'25 Saddleless Skis

4639-950 **6-IN. CARBIDE (PAIR)** | (Same application as 4639-949)

4639-951 **9-IN. CARBIDE (PAIR)** | (Same application as 4639-949)



MAVERICK™ WEARBARS

- Aggressive host bar featuring tall, concave side profile
- Precise bite and cornering control
- Sold in pairs

8639-547 **4-IN. CARBIDE (PAIR)** | '05-'25 Saddleless Skis

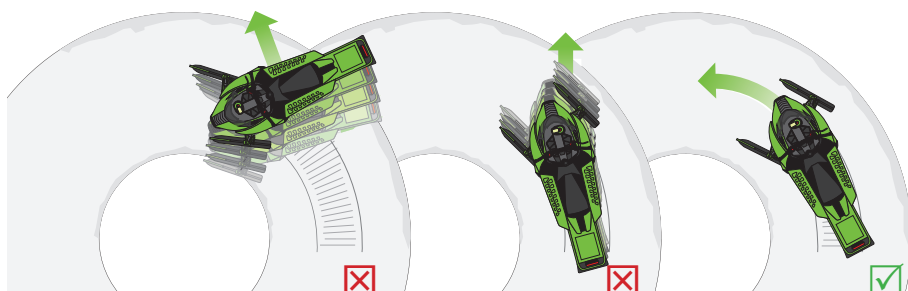
8639-548 **6-IN. CARBIDE (PAIR)** | (Same application as 8639-547)

8639-549 **8-IN. CARBIDE (PAIR)** | (Same application as 8639-547)

OPTIMIZE CONTROL

MAXIMIZE STEERING CONTROL

The length of the turning carbide (carbide inserted directly under the steering spindle) is the determining factor on steering control. The longer the turning carbide, the more positive turning becomes. Too few studs with long turning carbides can result in the situation shown in Illustration 1 below.



MAXIMIZE TRACTION CONTROL

The quantity and types of studs inserted through the track can have several effects. If installed improperly, track and/or stud damage can result. If the pushing force from an excessive number of studs exceeds the ability of the steering to control the force, the effect could be like that in Illustration 2. In this case, the studs tend to "push" the skis in a straight line.

- ❌ Back end loose. Too much carbide, not enough steering control.
- ❌ Front end pushes. Weak steering from worn wearbars, turning carbides too short or overstudding on track.
- ✅ Steering control and stud quantity are in balance for proper setup.

WHAT'S YOUR RIDING STYLE? ARE YOU... Determining the proper traction and control is simple. What's your riding style: Are you a conservative trail rider or a performance trail rider? Look at the chart below. Find the line with the horsepower of your sled. Look under your riding category. Here you will find the number of studs and the length of the carbide wearbar you should use. This is a baseline guide for stud and wearbar selection. See your dealer for specific model applications.

STUD QUANTITY / INCHES OF TURNING CARBIDE

SLED	TRAIL	PERFORMANCE
50-75 HP	48/4-in.	48/6-in.
75-125 HP	102/6-in.	153/8-in.
125-150 HP	153/8-in.	153/10-in.
150-200 HP	153/8-in.	153/10-in.

FOR STUD PLACEMENT, USE AN ARCTIC CAT-APPROVED STUD TEMPLATE SHOWN ON PAGE 70.

Arctic Cat traction products are available in package quantities that will give you the best combinations for 129-in. and 137-in. tracks.

RECOMMENDED STUD LENGTH (IN.)

TRACK LUG HEIGHT	WOODY'S® STUD LENGTH
1.000	1.075
1.250	1.325
1.352	1.325
1.500	1.575
1.600	1.575

Cobra 1.35/1.60-in. tracks have a standard lug height of 1.25/1.50-in. The overall lug height includes the extended "towers" at 1.35-in. because the towers will flex. These Cobra tracks do not use studs longer than their nominal lug height.



CAUTION

- To protect the tunnel from possible damage from the studs, it is recommended that Tunnel Protector Kit be installed on those models not so equipped
- A Short Snowflap is required when installing studs on '07-'09 F Series; '09 Z1, Z1 Turbo; '09-'11 Crossfire™ and CFR
- See your dealer for additional information

STUD PLACEMENT

- DO NOT use studs that are longer than recommended
- DO NOT place studs in line with the heat exchanger or tunnel protector strip, and factor in the amount of suspension travel to avoid tunnel damage
- Studs MUST NOT extend more than 3/8-in. beyond the rubber track lugs
- Verify adequate clearance between the track, tunnel and heat exchanger to avoid serious damage
- Confirm that your machine has adequate tunnel protection before installing studs
- Use an Arctic Cat-approved Stud Template shown on page 70
- The length of carbide and number of studs must coordinate to result in balanced handling and proper control



SLP WEARBARS (PAIR)

- Provides confident steering control on the mountain and on the trail
- Sold in pairs

3639-420 4-IN. CARBIDE (PAIR) | FITS SLP SKIS

3639-421 6-IN. CARBIDE (PAIR) | FITS SLP SKIS



STAGGERED WEARBARS

- Features a single carbide runner and an offset hardweld runner
- Lighter steering than a dual carbide runner
- Reduces darting and plugging
- Available with a standard (0.312) or aggressive (0.500) bar
- Fits '05-'23 Arctic Cat Saddleless Skis
- Sold individually

2703-598/599 4-IN. CARBIDE 3-BOLT .312 | '05-'25 Saddleless Skis

2603-988/ 989 4-IN. CARBIDE 3-BOLT .500 | (Same application as 2703-598/599)

2603-930/ 931 4-IN. CARBIDE 4-BOLT .500 | (Same application as 2703-598/599)



DOOLY™ TWIN CARBIDE WEARBARS

- Great, all-trail performance
- Reduces darting
- Features two carbide runners
- Sold individually

3639-343 4-IN. | '05-'25 Saddleless Skis

3639-344 6-IN. | (Same application as 3639-343)

3639-345 8-IN. | (Same application as 3639-343)



DEUCE™ TWIN CARBIDE WEARBARS

- Reduces darting and eliminates dual-runner-type drag
- Durable one-piece design
- Features two carbide runners
- Sold individually

5639-251 4.5-IN. | '05-'24 Saddleless Skis

5639-252 6-IN. | (Same application as 5639-251)

5639-253 9-IN. | (Same application as 5639-251)

SINGLE-PLY TRACKS

'25 ZR 400; '21-24 BLAST ZR; '20 RIOT X; '18-'19 NORSEMAN 3/6000; '16-'19 BEARCAT, PANTERA 7000 XT; '15-'20 BEARCAT 2000; '15 BEARCAT 5000; '14-'15 XF CROSS COUNTRY, CROSSTOUR; '12-'13 XF; '10-'14 BEARCAT 570, Z1 XT

2-PLY TRACKS

'14-'25 ZR; '20-'25 RIOT; '16-'19 XF; '12-'13 F; '15-'25 PANTERA, '16-'17 BEARCAT 3000, '15-'20 LYNX 2000, '11-'14 SNO PRO; '09-'14 T570, TZ1



GOLD DIGGER TRACTION MASTER (2-PLY)

- 60° carbide, 5/16-in. thread, 1-in. head
- The industry-leading and best-selling trail stud
- Outstanding penetration and durability on ice and hardpack from a 60° carbide tip
- Support plates sold separately



DIGGER® (2-PLY) SUPPORT PLATES

- Lightweight aluminum offers serious support
- Added strength from crowned profile
- 1.250-in. square; 1.375-in. round



DOUBLE DIGGER (2-PLY) SUPPORT PLATES

- Unmatched support from durable aluminum

2639-135 | 48/PK

GOLD DIGGER TRACTION MASTER® (2-PLY) TRACTION KITS

Includes studs, support plates, big nuts, template, stud drill and track marker

8639-235 96/PK (ROUND & DOUBLE PLATES) | '19-'20 Thundercat; '20 ZR Sno Pro 137 X 1.00-in. 2.86 P (1075 Series)

8639-100 144/PK (ROUND & DOUBLE PLATES) | (Same application as 8639-235)

8639-224 102/PK 102/PK (ROUND PLATES) | '20-'25 Riot 146 X 1.35-in. 2.86 P (1325 Series)

8639-234 102/PK 102/PK (ROUND PLATES) | '20-'25 Riot; '25 Riot, Norseman 400; '21-'24 Blast LT, XR 146 X 1.60-in. 2.86 P (1575 Series)



SIGNATURE SERIES STAINLESS STEEL (2-PLY)

- 60° carbide, 5/16-in. thread, 15/16-in. head
- Woody's proven push-through stainless steel stud at a competitive price
- Support Plates sold separately

SIGNATURE SERIES™ (2-PLY) TRACTION KITS

- Includes studs, support plates, big nuts, template, stud drill and track marker

6639-454 96/PK (SQUARE PLATES) | '16-'25 ZR; '17-'18, '21-'25 Thundercat; '14-'15 XF LXR, Sno Pro; 137 X 1.25-in. 2.86 P (1325 Series)

6639-455 144/PK (SQUARE PLATES) | (Same application as 6639-454)

6639-856 96/PK (ROUND PLATES) | (Same application as 6639-454)

6639-857 144/PK (ROUND PLATES) | (Same application as 6639-454)

7639-564 102/PK (ROUND PLATES) | '16-'25 Pantera 7000; '18-'19 Pantera 6000; '16-'18 XF CrossTour 7000 146 X 1.25-in. 2.86 P (1325 Series)

8639-293 135/PK (SQUARE & DOUBLE PLATES) | '14-'25 ZR; '13 F 129 X 1.25-in. 2.86 P (1325 Series)

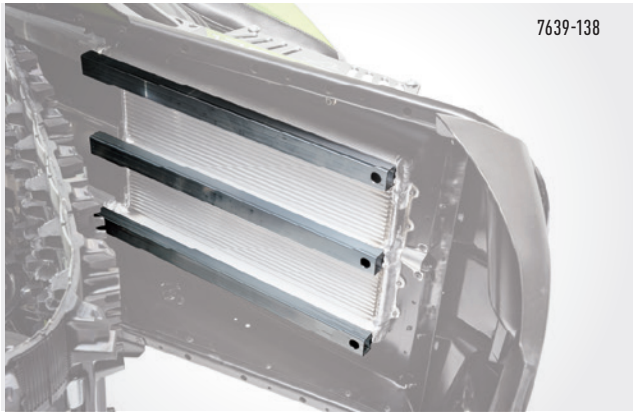
GRAND MASTER® (SINGLE-PLY) TRACTION KITS

- Studs feature a larger head design required for use on models with a single-ply track
- Includes studs, support plates, big nuts, template, stud drill and track marker
- 60° carbide, 5/16-in. thread, 1.20-in. head, 1.50-in. support plates

8639-421 96/PK | '25 ZR 400; '21-'24 Blast ZR; 121 X 1.00-in. 2.52 P (1075 Series)

7639-741 108/PK | '18-'19 Bearcat 7000 XT 20 X 154 X 1.60-in. 2.86 P (1575 Series)

5639-626 108/PK | '11-'17 Bearcat XT 20 X 154 X 1.375-in. 2.86 P (1450 Series)



TUNNEL PROTECTOR KIT

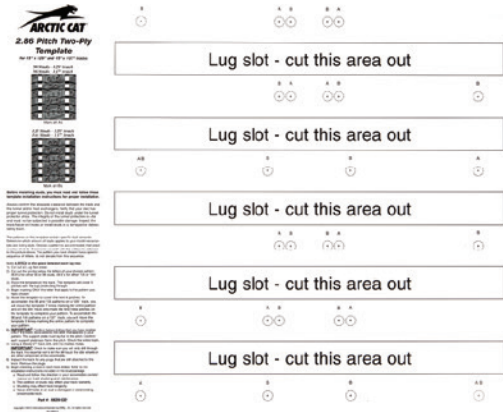
- Required when installing studs on models listed below
NOTE: Compatible 4000 and 7000 series models do not require tunnel protector kit

8639-453 | '24-'25 ZR, Riot 600/858 129-146-in.

7639-138 | '18-'24 ZR, Riot 8000; '18-'23 ZR, Riot 6000; '17-'25 ZR, Riot 9000; '18-'19 Pantera, XF Cross Country, CrossTrek 6/8000; '17-'19 XF 9000; 129-146-in.

6639-075 | '14-'17 ZR 6/8000; '15-'17 ZR 4000; '14-'16 ZR 5/9000; '13 F 129-in.

6639-118 | '16-'17 ZR 6/8000; '17 ZR 5000; '16 ZR 9000; '13-'15 XF 6/8/9000 137-141-in.



8639-227 | '14-'25 ZR, '13 F 129-in.; '16-'25 ZR, '14-'15 XF, '16-'18 XF CrossTrek 137-in.; '20-'25 Riot, '15-'25 Pantera, XF CrossTour 146-in. 2.86 P (2-Ply)



TRACK MARKER

- Ensures track pattern aligns perfectly with stud template

8639-452



STUD DRILL

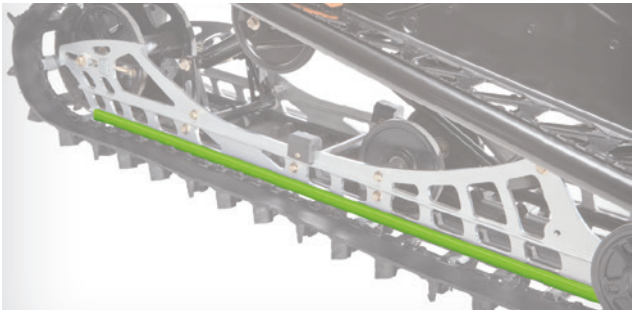
- Cuts cleanly for precise stud locations

1639-629 | 5/16-in.

MAINTENANCE



FEATURED ON SLED:
8639-511 FLEX-TEC LITE HAND GUARDS (SKYE BLUE)



WEAR STRIPS

- Sold individually
- Add a dash of color to your slide rails

4604-402 MEDIUM GREEN | 121-129-in. Models

4604-404 MEDIUM GREEN | 137-in. Models

4604-406 MEDIUM GREEN | 141-153-in. Twin Rail Models

4604-408 MEDIUM GREEN | 162-in. Twin Rail Models

4604-405 ORANGE | 121-137-in. Models

4604-407 ORANGE | 141-153-in. Twin Rail Models

4604-409 ORANGE | 162-in. Twin Rail Models



BELT TOOL

- Used to expand the driven clutch to aid in changing the drive belt and adjusting deflection [Certain models]

0644-659 | '16-'25 5/6/7/8/9000; 600/858 MODELS

0644-662 | '21-'25 400/4000; '15-'23 R SX; '15-'21 R XC; '04-'14 SNO PRO MODELS



DRIVE CLUTCH PULLER

- Used to remove the drive clutch for service or calibration adjustment
- Built from hardened steel for superior durability
- Color coating for easy identification

0744-080 METRIC (BLUE) | UNIVERSAL '10-'25; (EXCEPT '22-'25 9000 MODELS) '07-'09 1000 MODELS

0644-650 METRIC (GOLD) | '22-'25 9000 MODELS

0644-207 SAE (BLACK) | UNIVERSAL '97-'09 (EXCEPT '07-'09 1000 MODELS)



FOX FLOAT DIGITAL PUMP

- Easily adjust FOX Float air pressure in the shop or on the trail
- Convenient digital display reads 0-300 psi
- Replaceable battery

7639-121 | FOX FLOAT SHOCKS



FOX FLOAT DUAL GAUGE PUMP

- Easily adjust FOX Float air pressure in the shop or on the trail
- Primary gauge reads 0-300 PSI, secondary gauge reads 0-150 PSI
- No battery required

0641-257 | FOX FLOAT SHOCKS



TRACK TENSION TOOL

- Maintain your track tension for optimum performance

7639-153 | UNIVERSAL



EXHAUST SPRING TOOL

- Easily remove the springs securing the expansion chamber and resonator
- Provides wide-open access to service the engine and other underhood components

0644-554 STANDARD 6-IN. | Universal

6639-904 HEAVY-DUTY 16-IN. | Universal



DRIVELINE REBUILD KIT

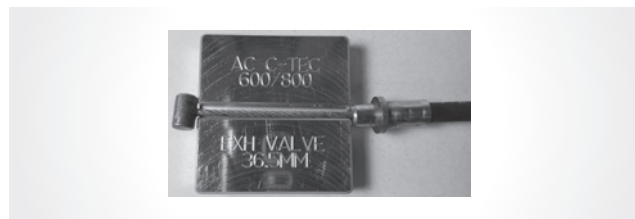
- Keep your ProCross, ProClimb, or Ascender sled rolling smoothly and efficiently with a complete drive bearing kit
- LH + RH jackshaft bearings
- LH + RH driveshaft bearings
- Hardware and instructions

8639-489 | '15-'24 8000; '15-'23 6000; '15-'16 4/5/9000 MODELS

8639-491 | '17-'25 7/9000 MODELS (EXCEPT XT)

8639-490 | '25 400; '21-'24 4000; '15-'16 7000; '16-'19 3000 MODELS

8639-488 | '14 5/6/8/9000; '12-'13 800/1100 MODELS



EXHAUST VALVE CABLE GAUGE

- Used to check Arctic Power Valve (APV) cable adjustment
- Ensure optimal exhaust valve operation for smooth, responsive engine performance

8639-126 | '10-'24 800/8000; '14-'25 600/6000 MODELS



ENGINE REBUILD KITS

- Give your Cat another life with everything needed to refresh your engine
- Piston + ring assemblies
- Wrist pins + bearings + shims
- Top end gasket set
- Spark plugs

8639-238 | '10-'17 800/8000 MODELS

8639-239 | '14-'19 6000 MODELS

8639-240 | '18-'19 8000 MODELS

BELTS

- > Custom fit to match each Arctic Cat sled and specific use
- > Better contact with clutch surface and faster acceleration from double cogs
- > Increased belt life by running cooler than aftermarket belts
- > Premium reinforced with Aramax® aramid fibers for strength and durability
- > Increased power transmission with less slip
- > Kevlar® drive belts available for high performance models, which dramatically extend belt life and sustain belt length better than traditional cords

NOTE: Proper break-in period required.

PREMIUM ARCTIC CAT "EXTENDED-LIFE" ORIGINAL EQUIPMENT REPLACEMENT BELTS

Don't settle for anything less than a drive belt built specifically for your sled. Proven through extensive lab and field testing, original equipment Arctic Cat replacement belts are precision-engineered for each Arctic Cat snowmobile.

CUSTOM-ENGINEERED FIT

While non-OEM aftermarket belts offer "one construction fits all," Arctic Cat Research & Development custom engineers each genuine Arctic Cat belt to match the specific performance

characteristics of your sled. This produces the best combination of strength, durability and responsiveness for lower-horsepower, fan-cooled sleds all the way up to high-horsepower muscle sleds. Each one is built using only state-of-the-art materials, incorporating precision manufacturing techniques to meet exacting tolerances.

TOP & BOTTOM COGS

Arctic Cat original equipment belts are double cogged, so more of the belt contacts the clutch surfaces. This results in faster acceleration, maximum efficiency and superb overall performance. Double-cog design provides structure while adding surface area for greater cooling and longer life. In fact, our belt runs cooler than flat-top aftermarket belts.

ARAMAX HIGH-MODULUS ARAMID-FIBER TENSILE MEMBER

The Aramax inner cord provides incredible strength and durability for high-horsepower, high-performance sleds. In addition, each belt is chemically treated for maximum power transmission and length stability.

HIGH-PERFORMANCE PREMIUM COMPOUNDS

Arctic Cat's OEM belts incorporate advanced "premium" compound materials that ensure optimum belt performance under all riding conditions. The advanced aramid-fiber-loaded rubber compound resists wear and delivers consistent power while minimizing slippage over a broad range of operating temperatures. The thicker, highly flexible design increases grip to clutch surfaces for increased power transmission.

ARCTIC CAT KEVLAR DRIVE BELTS

Arctic Cat's OEM belts incorporate advanced "premium" compound materials that ensure optimum belt performance under all riding conditions. The advanced aramid-fiber-loaded rubber compound resists wear and delivers consistent power while minimizing slippage over a broad range of operating temperatures. The thicker, highly flexible design increases grip to clutch surfaces for increased power transmission.



2004

BEARCAT 570	0627-013
BEARCAT W/T	0627-033
F5	0627-020
F6/7	0627-031
KING CAT	0627-020
MOUNTAIN CAT	0627-020
PANTERA 550	0627-021
PANTERA (EFI)	0627-020
PANTHER	0627-021
SABERCAT 500	0627-020
SABERCAT 600/700	0627-031
T660 TOURING	0627-021
T660 TURBO	0627-028
Z	0627-021
ZR	0627-033

2005

BEARCAT 570	0627-013
BEARCAT W/T	0627-033
F5/6/7	0627-034
KING CAT	0627-020
M5/6/7	0627-036
PANTERA 550	0627-021
PANTERA 600	0627-020
PANTHER	0627-021
SABERCAT 500	0627-020
SABERCAT 600/700	0627-035
T660 TOURING	0627-021
T660 TURBO	0627-028
Z	0627-021
ZR 900	0627-032

2006

BEARCAT 570	0627-013
BEARCAT W/T	0627-033
BEARCAT W/T TURBO	0627-049
CROSSFIRE	0627-036
F5	0627-044
F6	0627-020
F6/7 (W/O REVERSE)	0627-044
F7	0627-035
KING CAT	0627-020
M5/6/7	0627-036
PANTHER 370/570	0627-021
PANTHER 660	0627-013
SABERCAT 500/600	0627-020
SABERCAT 700	0627-035
T660 TOURING	0627-013
T660 TURBO	0627-048
Z	0627-021
ZR 900	0627-045

2007

BEARCAT 570	0627-013
BEARCAT W/T	0627-033
BEARCAT W/T TURBO	0627-049
CROSSFIRE 5/6/8/1000	0627-046
F5/6/8/570	0627-046
F1000	0627-060
JAGUAR Z1	0627-047
M6/8/1000	0627-046
PANTHER 370/570	0627-021
PANTHER 660	0627-013
T660 TOURING	0627-013
T660 TURBO	0627-048
Z	0627-021

2008

BEARCAT 570	0627-013
BEARCAT W/T	0627-033
BEARCAT W/T TURBO	0627-049
CROSSFIRE 5/6/8	0627-046
CROSSFIRE 1000	0627-060
F5/6/8/570	0627-046
F1000	0627-060
JAGUAR Z1	0627-047
M6/8	0627-046
M1000	0627-060
PANTHER 370	0627-021
PANTHER 660	0627-013
600 SNO PRO	0627-073
T500/T570	0627-046
TZ1	0627-047

2009

BEARCAT 570	0627-067
BEARCAT 570 XT	0627-046
BEARCAT Z1 XT	0627-047
CROSSFIRE 500	0627-067
CROSSFIRE, R 6/8	0627-046
CROSSFIRE, R 1000	0627-060
F5/570	0627-067
F6/8	0627-046
F1000 SNO PRO	0627-060
M6/8	0627-046
M1000	0627-060
600 SNO PRO SX	0627-070
600 SNO PRO XC	0627-073
T500/570	0627-067
TZ1	0627-047
TZ1 TURBO	0627-066
Z1	0627-047
Z1 TURBO	0627-066

2010

BEARCAT 570	0627-067
BEARCAT 570 XT	0627-046
BEARCAT Z1 XT	0627-047
CROSSFIRE 6	0627-046
CROSSFIRE, CFR 8/1000	0627-060
F5/570	0627-067
F6/8	0627-046
M6/8	0627-046
M1000	0627-060
SNO PRO 500	0627-047
SNO PRO 600 SX	0627-075
SNO PRO 600 XC	0627-076
T570	0627-067
TZ1	0627-069
TZ1 TURBO	0627-073
Z1	0627-069
Z1 TURBO	0627-073

2011

BEARCAT 570	0627-067
BEARCAT 570 XT	0627-046
BEARCAT Z1 XT	0627-047
CROSSFIRE 6	0627-046
CROSSFIRE, CFR 8/1000	0627-060
F5/570	0627-067
F6/8	0627-046
M6/8	0627-046
M1000	0627-060
SNO PRO 500	0627-047
SNO PRO 600 SX	0627-075
SNO PRO 600 XC	0627-076
T570	0627-067
TZ1	0627-069
TZ1 TURBO	0627-073
Z1	0627-069
Z1 TURBO	0627-073

2012

BEARCAT 570	0627-067
BEARCAT 570 XT	0627-046
BEARCAT Z1 XT	0627-047
F5/570	0627-067
F 800	0627-083
F 1100	0627-081
F 1100 TURBO	0627-082
M 800	0627-084
M 1100	0627-081
M 1100 TURBO	0627-082
SNO PRO 500	0627-047
SNO PRO 600	0627-085

2012 (CONTINUED)

T570	0627-067
TZ1	0627-069
TZ1 TURBO	0627-082
XF 800	0627-083
XF 800 HIGH COUNTRY	0627-084
XF 1100	0627-081
XF 1100 TURBO	0627-073

2013

BEARCAT 570	0627-067
BEARCAT 570 XT	0627-046
BEARCAT Z1 XT	0627-047
F5/570	0627-067
F 800	0627-083
F 1100	0627-081
F 1100 TURBO	0627-082
M 800	0627-084
M 1100	0627-081
M 1100 TURBO	0627-082
SNO PRO 500	0627-047
SNO PRO 600	0627-086
T570	0627-067
TZ1	0627-069
TZ1 TURBO	0627-073
XF 800	0627-083
XF 800 HIGH COUNTRY	0627-084
XF 1100	0627-081
XF 1100 TURBO	0627-082

2014

BEARCAT 570	0627-067
BEARCAT 570 XT	0627-046
BEARCAT Z1 XT	0627-047
BEARCAT GS	0627-073
F5/570	0627-067
M 6000	0627-083
M 8000	0627-084
M 9000	0627-082
SNO PRO 500	0627-047
T570	0627-067
TZ1	0627-069
XF 7000	0627-070
XF 8000	0627-083
XF 8000 HIGH COUNTRY	0627-084
XF 9000	0627-082
ZR 5000	0627-081
ZR 6000	0627-083
ZR 6000R	0627-086
ZR 7000	0627-070
ZR 8000	0627-083
ZR 9000	0627-082

2015	
BEARCAT 2000	0627-067
BEARCAT 2000 XT	0627-046
BEARCAT 5000 XT	0627-047
BEARCAT GS	0627-073
LYNX 2000	0627-067
M 6000	0627-083
M 8000	0627-084
M 9000	0627-082
PANTERA 7000	0627-069
XF 7000	0627-070
XF 8000	0627-083
XF 8000 HIGH COUNTRY	0627-084
XF 9000	0627-082
ZR 4000	0627-083
ZR 5000	0627-081
ZR 6000	0627-083
ZR 6000 R-SX	0627-086
ZR 7000	0627-070
ZR 8000	0627-083
ZR 9000	0627-082
2016	
BEARCAT 2000 LT	0627-067
BEARCAT 2000 XT	0627-046
BEARCAT 3000 LT	0627-081
BEARCAT 7000 XT	0627-102
LYNX 2000	0627-067
M 6000	0627-083
M 7000	0627-070
M 8000	0627-084
M 9000	0627-082
PANTERA 3000	0627-081
PANTERA 7000	0627-070
PANTERA 7000 XT	0627-102
XF 6000	0627-070
XF 7000	0627-070
XF 8000	0627-083
XF 8000 HIGH COUNTRY	0627-084
XF 9000	0627-082
ZR 4000	0627-083
ZR 5000	0627-081
ZR 6000	0627-083
ZR 6000 R-SX	0627-086
ZR 7000	0627-070
ZR 8000	0627-083
ZR 9000	0627-082

2017	
BEARCAT 2000 LT	0627-067
BEARCAT 2000 XT	0627-046
BEARCAT 3000 LT	0627-081
BEARCAT 7000 XT	0627-102
LYNX 2000	0627-067
M 6000	0627-083
M 8000	0627-084
PANTERA 3000	0627-081
PANTERA 7000	0627-070
PANTERA 7000 XT	0627-102
XF 6000	0627-083
XF 7000	0627-070
XF 8000	0627-084
XF 9000	0627-112
ZR 3000	0627-081
ZR 4000	0627-083
ZR 5000	0627-081
ZR 6000	0627-083
ZR 6000 R-SX	0627-086
ZR 7000	0627-070
ZR 8000	0627-084
ZR 9000	0627-112
2018	
BEARCAT 2000 LT	0627-067
BEARCAT 7000 XT	0627-102
BEARCAT XT	0627-114
LYNX 2000	0627-067
M 6000	0627-107
M 8000	0627-111
M 9000	0627-112
NORSEMAN 3000	0627-081
NORSEMAN 6000	0627-107
PANTERA 3000	0627-081
PANTERA 6000	0627-107
PANTERA 7000	0627-110
PANTERA 7000 XT	0627-102
XF 6000	0627-107
XF 7000	0627-110
XF 8000	0627-111
XF 9000	0627-112
ZR 200	0627-106
ZR 3000	0627-081
ZR 6000	0627-107
ZR 6000 R-SX	0627-086
ZR 7000	0627-110
ZR 8000	0627-111
ZR 9000	0627-112

2019	
BEARCAT 7000 XT	0627-102
LYNX 2000	0627-067
M 6000	0627-107
M 8000	0627-111
M 9000	0627-112
NORSEMAN 3000	0627-081
NORSEMAN 6000	0627-107
NORSEMAN 8000	0627-111
PANTERA 3000	0627-081
PANTERA 7000	0627-110
PANTERA 7000 XT	0627-102
XF 6000	0627-107
XF 8000	0627-111
XF 9000	0627-112
ZR 200	0627-106
ZR 3000	0627-081
ZR 6000	0627-107
ZR 6000 R-SX	0627-120
ZR 7000	0627-110
ZR 8000	0627-111
ZR 9000	0627-112
2020	
LYNX 2000	0627-067
M 6000	0627-107
M 8000	0627-111
RIOT 6000	0627-107
RIOT/X 8000	0627-111
ZR 200	0627-106
ZR 6000	0627-107
ZR 8000	0627-111
ZR 9000	0627-112
2021	
BLAST 4000	0823-683
M 8000	0627-111
NORSEMAN X 8000	0627-111
RIOT 6000	0627-107
RIOT/X 8000	0627-111
ZR 200	0627-106
ZR 6000	0627-107
ZR 6000 R-SX	0627-120
ZR 8000	0627-111
ZR 9000	0627-112

2022

BLAST 4000	0823-683
M 8000	0627-111
NORSEMAN X 8000	0627-111
RIOT 6000	0627-107
RIOT/X 8000	0627-111
ZR 200	0627-106
ZR 6000	0627-107
ZR 6000 R-SX	0627-120
ZR 8000	0627-111
ZR 9000	0627-112

2023

BLAST 4000	0823-683
M 8000	0627-111
NORSEMAN X 8000	0627-111
RIOT/X 8000	0627-111
RIOT 9000	0627-112
ZR 200	0627-106
ZR 6000	0627-107
ZR 6000 R-SX	0627-120
ZR 8000	0627-111
ZR 9000	0627-112

2024

BLAST 4000	0823-683
M 600	0627-131
M 8000	0627-111
NORSEMAN X 8000	0627-111
PANTERA 7000	0627-110
RIOT 600	0627-131
RIOT/X 8000	0627-111
RIOT 9000	0627-112
ZR 200	0627-106
ZR 600	0627-131
ZR 600 R-SX	0627-120
ZR 7000	0627-110
ZR 8000	0627-111
ZR 9000	0627-112

2025

M 400	0823-683
M 600	0627-131
M 858	0627-127
NORSEMAN 400	0823-683
PANTERA 7000	0627-110
RIOT 400	0823-683
RIOT 600	0627-131
RIOT 858	0627-127
RIOT 9000	0627-112
ZR 200	0627-106
ZR 400	0823-683
ZR 600	0627-131
ZR 7000	0627-110
ZR 858	0627-127
ZR 9000	0627-112



FINAL DRIVE BELT

- Dropcase drive belt delivers power efficiently to the track drive shaft
- Carbon fiber reinforced construction is highly resistant to heat and stretching

0627-128 | *24-*25 ZR, RIOT, M 600/858



OIL & CARE

OIL APPLICATION

MODEL	YEAR	CTEC2 SYNTHETIC OIL	CTEC4 SYNTHETIC OIL	FORMULA 50 SYNTHETIC	FORMULA 50
120	2000-'25		X		
200	2018-'25		X		
400 / 4000	2021-'25	X			
600 / 6000	2014-'25	X			
858	2025	X			
7000	2014-'25		X		
9000	2017-'25		X		
370	1999-'07	X		X	X
3000	2016-'19		X		
500 / 4000	2003-'17	X		X	
570 / 2000	2002-'20	X		X	X
600	2004-'13	X		X	
660	2002-'08		X		
700	2003-'06	X		X	
800 / 8000	2007-'17	X		X	
8000	2018-'24	X			
900	2003-'06	X		X	
1000	2007-'11	X		X	
1100 / 5000	2007-'16		X		
1100T / 9000	2009-'16		X		
Non-Power Valve	All	X		X	X

C-TEC2™ SYNTHETIC OIL

The C-TEC2 revolutionary clean-burning engine technology demands an entirely unique oil formulation. This lubrication system effectively delivers oil where it is required — as a result using significantly less oil compared with traditional 2-cycle engines. This technology requires a unique viscosity and blend of additives and base stocks. After several years of intense testing, numerous formulations, thousands of dyno hours and hundreds of thousands of field test miles, we landed on this unique oil technology.

- The ONLY oil recommended for the C-Tec2 engine, but approved for ALL Arctic Cat 2-cycle engines
- Reduction in recoil pull-effort during cold weather starting
- Convenient C-Tec2 oil packaging provides easier pourability and less waste
- Fully synthetic formulation provides ultimate engine protection
- Detergent additives maximize Arctic Power Valve™ and engine cleanliness
- Smokeless formulation burns extremely clean with a fresher scent

8639-118	1 QUART
7639-840	1 GALLON
6639-521	2.5 GALLONS



APV™ SYNTHETIC OIL

- Outstanding performance for all non-C-Tec2 Arctic Cat 2-cycle engines
- Protects against engine wear with excellent lubricity
- Provides excellent Arctic Power Valve cleanliness
- Smokeless formulation burns clean
- Helps prevent piston scuffing, varnish formation and deposit buildup

4639-349	1 QUART
5639-469	1 GALLON
4639-347	2.5 GALLONS



FORMULA 50 OIL

- Mineral based 50:1 injection oil is recommended for non-Arctic Power Valve 2-cycle engines
- Performs well over a wide range of operating temperatures
- Minimizes engine wear
- Prevents rust/deposit formation

5639-475	1 QUART
5639-476	1 GALLON



C-TEC4™ SYNTHETIC OIL & CHANGE KITS

- Provides superior performance in ALL operating conditions including in the extreme cold
- Synthetic base stocks offer high lubricity that protects engine from wear and scuffing
- Exclusive formulation includes additives that help prevent deposit formations, ring sticking and engine wear
- Oil change kits include one gallon of synthetic C-Tec4 oil, oil filter, O-ring washer and disposable funnel

6639-524	1 QUART (OIL ONLY)
6639-525	1 GALLON (OIL ONLY)
6639-529	'17-'25 9000 MODELS (998CC); '14-'25 7000 MODELS (1049CC)
6639-528	'07-'16 1100/1100T, 5/9000 MODELS (1056CC)
7639-042	'15-'19 3000 MODELS (700CC)

4-STROKE OIL





SYNTHETIC ACT GEARCASE FLUID

- Specially formulated for the ACT drive system
- Full synthetic lubricant that stays consistent across a broad temperature range so it flows well when cold and won't break down when hot
- Protects against wear and corrosion in ACT drive systems with reverse

5639-219 | 15-oz.

7639-080 | 27.1-oz.



ARCTIC CAT EXTREME LOW TEMP GREASE

- Premium synthetic base makes Arctic Cat Low-Temp Grease perform in extreme winter conditions, -40°F to 300°F
- Keeps contaminants from entering and damaging suspension components
- Exceptional cold temp bearing and pivot point performance

7639-517 | 10-oz.



ACT™ DRIVE FLUSH FLUID

- Flush ACT gearcase to remove contaminants and wear particles before replacing ACT gearcase fluid

4639-333 | 6-oz.



SYNTHETIC SHOCK OIL

- Full synthetic medium weight shock oil protects against wear, fading, foaming, oxidation, rust and corrosion
- Proven superior performance under extreme conditions
- Best choice for servicing gas shocks that will see heavy-duty trail or racing use

4639-368 | QUART



SYNTHETIC CHAIN LUBE

- Full synthetic formulation resists breakdown and helps protect against wear at extreme high or low temperatures
- Inhibits rust and corrosion during periods of non-use or extended storage
- Made with additive that protects internal components and conditions seals

6639-539 | 15-oz.

6639-117 | 2.5 GALLONS



SEMI-SYNTHETIC SHOCK OIL

- Engineered with a high viscosity index (VI) formulation
- Provides superior, consistent performance in severe operating and racing conditions
- Protects against wear, foaming, oxidation and corrosion

5639-530 | QUART



FUEL TREATMENT

- Dual- antioxidant formula protects fuel system
- Stabilizes fuel for up to 2 years
- Safe for all power sports applications
- Ethanol compatible
- Convenient measuring cup

2436-868 | 12-oz.



ANTIFREEZE 60/40 EXTENDED LIFE

- Premixed and ready to pour
- Protects against freezing to -62°F and has boiling point of 270°F
- Bitterant additive reduces likelihood of animal ingestion
- Extended-life antifreeze 3 times longer service life

2436-871 | GALLON



DOT 4 BRAKE FLUID

- Premium fluid designed with corrosion and oxidation inhibitors has over 10% higher wet boiling point than DOT 4 minimum requirements
- Provides firm brake-feel in all conditions, even if moisture is introduced into the brake system

5639-848 | 12-oz.



SPARK PLUG CADDY

0636-054 MEDIUM GREEN | UNIVERSAL



CAT CADDY

- Store your machine conveniently and move around the garage effortlessly on rollers
- Superior mobility from 2.5" swivel casters
- Includes two ski dollies and a track dolly


5639-873 PLASTIC - BLACK

5639-874 PLASTIC - GREEN

4639-766 ALUMINUM - BLACK

TOUCH-UP PAINT

- Repair scratches and keep your Cat looking like new with genuine, factory color touch-up paint
- Available in 1/2-oz. (15-ML.) bottle or 12-oz. (354-ML.) aerosol
- See your dealer for specific vehicle application and complete details

COLOR	APPLICATION		0.5-OZ.	12-OZ.
BALLISTIC BRONZE	'20 Models		0652-240	0652-241
BLACK	Universal (Plastic)		0652-100	N/A
BLACK	'00-'17 Models		0652-110	0652-024
BLACK (SEMIGLOSS)	'18-'25 Models		0652-228	0652-229
BLACK MAGIC	'23-'25 Models		0652-276	0652-277
CAT GREEN	'98-'11 Models		N/A	0652-077
DYNAMIC CHARCOAL	'20-'22 Models		0652-242	0652-243
DYNAMIC GRAY	'17-'19, '21 Models		0652-222	0652-223
ELECTRIC BLUE	'20 Models		0652-248	0652-249
FIRE RED	'17-'24 Models		0652-218	0652-219
GALAXY BLUE	'24-'25 Models		0652-278	0652-279
HYPER GREEN	'20-'22 Models		0652-244	0652-245
MEDIUM GREEN	'17-'25 Models		0652-220	0652-221
ORANGE	'08-'19, '21-'25 Models		0652-141	0652-142
PEARL CAT GREEN	'08-'13 Models		0652-144	0652-145
PHANTOM GRAY	'23 Models		0652-260	0652-261
PLATINUM	'02-'11 Models		N/A	0652-096
PURPLE	'19 Models		0652-238	0652-239
QUICKSILVER	'20 Models		0652-250	0652-251
SKYE BLUE	'21-'25 Models		0652-246	0652-247
SPARK ORANGE	'23 Models		0652-256	0652-257
STAR WHITE	'24 Models		0652-280	0652-281
SUNSET ORANGE	'14, '24-'25 Models		0652-148	0652-149
TEAM ARCTIC GREEN	'14-'18 Models		0652-199	0652-200
TRUE PLATINUM	'23 Models		0652-266	0652-267
WHITE	'14-'25 Models		0652-189	0652-190





FIND THE RIGHT RIDE

CALL OR VISIT YOUR LOCAL
ARCTIC CAT DEALER FOR MORE
INFORMATION. FOR A DEALER
NEAR YOU, VISIT ARCTICCAT.COM.

Snowmobiling is serious fun. Be sure to read and understand your owner's manual and please pay special attention to the safety instructions. Arctic Cat Inc. endorses and encourages the safe use of all snowmobiles. Be careful; you can get hurt. Wear an approved helmet and don't drink and ride. Be aware of natural hazards you may encounter, allow yourself plenty of room to safely stop your snowmobile under all conditions, and maintain your equipment. Your safety is in your hands, so take care. All scenes depicted or described in this brochure were performed by professional riders under carefully controlled conditions. Leave the fancy riding to the pros; they practice for years and train very hard to make it look easy. Never attempt to duplicate these maneuvers or encourage others to do so. We care about your safety and enjoyment of the sport. All materials and specifications are subject to change without notice. All specifications, competitive specifications, claims and information contained within are based on current knowledge and readily available printed material available as of January 1, 2023. All rights reserved. Cobra™ and Ripsaw™ are trademarks of Camso Inc. FOX®, FOX FLOAT® and FOX ZERO are registered trademarks of FOX Racing Shox. Garmin is a trademark of Garmin Ltd. or its subsidiaries. ADAPT™, Alpha One®, Arctic Cat®, Arctic Mountain Suspension™, Arctic Race Suspension™, ARS™, Ascender™, Arctic Wishbone Suspension™, AWS™, Bearcat®, CATALYST™, C-TEC2™, C-TEC4™, CVTEC™ ATAC®, Mountain Cat®, PowerClaw™, ProClimb™, SLIDE-ACTION Rear Suspension™, Sno Pro®, Sno-Cross™, Team Arctic®, Thundercat®, Torque-Sensing Link™ and ZR® Norseman® and BLAST® are trademarks or registered trademarks of Arctic Cat Inc. The Arctic Cat snowmobile brand is among the most widely recognized and respected in the industry. The company designs, engineers, manufactures and markets snowmobiles, in addition to related parts, garments and accessories under the Arctic Cat brand name. Offerings and features are subject to change without notice. For more information, visit: www.arcticcat.com. ARCTICCAT.COM ARCTIC CAT'S ONLINE HQ. EVERYTHING FROM MACHINES AND SPECS DOWN TO THE ACCESSORIES AND GEAR YOU NEED TO TAKE ON THE WORLD.



arcticcat.com

