



ATV & SXS
ACCESSORIES



2024





**EXPLORE
MORE
TOGETHER.**

 **2024 MODELS**

NAVIGATION	4-5
LIGHTING	6-7
WINCHES	8-9
PLOWS	10-11
ALTERRA® 450	12-13
ALTERRA 600	14-21
PROWLER® PRO	22-29
WILDCAT® XX	30-34
UNIVERSAL/OIL CARE	36-43

 **PAST MODELS**

PROWLER 500	46-51
PROWLER EV	52-54
ALTERRA 570 & 700	55-61
TBX	62-65
VLX	66-69
XR	70-76
STAMPEDE®/HAVOC®	77-82
WILDCAT X	83-87
WILDCAT TRAIL/SPORT	88-91

BUILT FOR ADVENTURE

GO CONFIDENTLY INTO EVERY RIDE WITH THE RUGGED GARMIN™ TREAD 5.5-IN. POWERSPORT NAVIGATOR.

With a glove-friendly touch screen, this device is built to withstand extreme terrains, temperatures, and weather with an **IP67 rating**. Get the lay of the land with **Preloaded Topographic** trail and street maps.

CHOOSE BETWEEN PREMIUM OR STANDARD TREAD GPS KITS



TREAD GPS KITS PROWLER PRO/CREW

PREMIUM TREAD GPS KIT - 3441-555 (US Only)

Includes: GPS, Group Ride Radio module + antenna + cable, universal mount, power cable, and user guide

STANDARD TREAD GPS KIT - 3441-557 (US & CAN)

Requires GPS Install Kit, sold separately. Includes: GPS, universal mount, power cable, and user guide

GPS INSTALL KIT - 3436-134

Requires GPS Install Kit, sold separately. Includes: GPS dash mount, mounting hardware, and instructions



TREAD GPS KITS WILDCAT XX

PREMIUM TREAD GPS KIT - 3441-555 (US Only)

Requires GPS Install Kit, sold separately.

Includes: GPS, Group Ride Radio module + antenna + cable, universal mount, power cable, and user guide

STANDARD TREAD GPS KIT - 3441-557 (US & CAN)

Requires GPS Install Kit, sold separately.

Includes: GPS, universal mount, power cable, and user guide

GPS INSTALL KIT - 3436-135

Includes: GPS dash mount, mounting hardware, and instructions

*Standard with Wildcat XX Black Hills Edition



TREAD GPS KITS ALTERRA 600 MODELS*

PREMIUM TREAD GPS KIT - 3441-555 (US Only)

Requires GPS Install Kit, sold separately.

Includes: GPS, Group Ride Radio module + antenna + cable, universal mount, power cable, and user guide

STANDARD TREAD GPS KIT - 3441-557 (US & CAN)

Requires GPS Install Kit, sold separately.

Includes: GPS, universal mount, power cable, and user guide

GPS INSTALL KIT - 3436-133

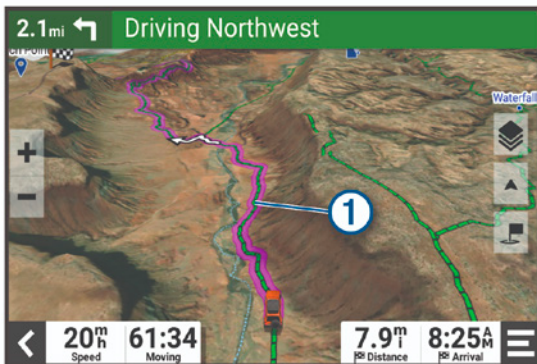
Includes: GPS pod mount, mounting hardware, and instructions

*Excludes MudPro



WARNING: Cancer and Reproductive Harm - www.P65Warnings.ca.gov.

This WARNING applies to all items that can be ordered on this page.



➔ Plan your path based on your skill and comfort level using Garmin **Trail Rating** information.



➔ **Built in** altimeter, barometer, compass, pitch and roll gauges help you navigate any challenging terrain.

Stay connected with **Group Ride Mobile**, featuring group tracking and route sharing with up to 20 riders. Upgrade to **Group Ride Radio** voice communication with the Premium GPS kit (US only).



GARMIN

For more Tread features and complete details, visit arcticcat.com or a dealer near you.

Prices, product availability, package quantities, specifications and materials may change without notice. For a dealer near you, visit arcticcat.com.

LIGHTING

HEISE LIGHT BARS - PROWLER PRO, PROWLER PRO CREW, & WILDCAT XX

All Heise LED lights are IP67 rated and built with a robust aluminum housing and stainless steel hardware. These features work together to provide enhanced durability and help prevent rust while providing high-quality and intense light.



HEISE 42-IN. DUAL-ROW CURVED LED LIGHT BAR

The 240-watt, 42-in. Dual-Row Curved LED Light Bar, connects to the front roof light bar attachment, delivers 19,200 raw lumens. The 90° flood light beam illuminates a vast area, while the 8° spot beam provides an intense light in the center.

Includes 42-in. light bar and brackets

LIGHT BAR - 654073

REQUIRED, BUT SOLD SEPARATELY:

HARNESS - 0486-747

HARNESS ADAPTOR - 0486-749

BACKLIT SWITCH - 0409-204

REQUIRED, VEHICLE DEPENDENT:

PROWLER PROCREW FRONT ROOF MOUNT - 3436-146

WILDCAT XX MOUNTS DIRECTLY TO HARD TOP OR ALUMINUM ROOF



HEISE 22-IN. DUAL-ROW LIGHT BAR

The 120-watt, 22-in. Dual-Row LED Light Bar, connects to the front roof light bar attachment, delivers 9,600 raw lumens. The 90° flood light beam illuminates a vast area, while the 8° spot beam provides an intense light in the center. Includes 22-in. light bar and brackets

LIGHT BAR - 654072

REQUIRED, BUT SOLD SEPARATELY:

HARNESS - 0486-747

HARNESS ADAPTOR - 0486-748

BACKLIT SWITCH - 0409-204

REQUIRED, VEHICLE DEPENDENT:

PROWLER PRO FRONT ROOF MOUNT - 3436-146

WILDCAT XX FRONT ROOF MOUNT - 3436-152



HEISE 9.25-IN. SINGLE ROW LIGHT BAR

The 18-watt, 9.25-in. Single-Row LED Light Bar, which connects to the front roof light bar attachment, delivers 1440 raw lumens. The 90° flood light beam offers a wide angle of illumination. Includes: 9.25-in. light bar and brackets

LIGHT BAR - 654077

REQUIRED, BUT SOLD SEPARATELY:

HARNESS - 0486-747

HARNESS ADAPTOR - 0486-748

BACKLIT SWITCH - 0409-204

REQUIRED, VEHICLE DEPENDENT:

PROWLER PRO FRONT ROOF MOUNT - 3436-146

WILDCAT XX FRONT ROOF MOUNT - 3436-152

⚠ WARNING: Cancer and Reproductive Harm - www.P65Warnings.ca.gov.

This WARNING applies to all items that can be ordered on this page.



UTILITY LIGHTS - PROWLER PRO & PROWLER PRO CREW

Combine the beacon light with your work light set seamlessly. Main harness and extension harness already includes plug-and-play connection for the beacon light. Just add the light and an extra switch for a complete utility light setup.

WORK LIGHTS ROOF SET

WORK LIGHTS ROOF SET (PAIR) - (2436-658)

REQUIRED - (Sold Separately): **REAR LIGHT MOUNT** - (2436-668), **OVERHEAD CONSOLE** - (2436-615), **3 PASS HARNESS** - (2436-678) or **CREW HARNESS** - (2436-958), **BACKLIT SWITCH** - (0409-204)

OPTIONAL ADD-ON: (SHOWN)

BEACON LIGHT KIT - (2436-657)

SWITCH - (1436-178)



WARN VRX WINCHES

WARN VRX winches are made of durable, all-metal construction and are IP68 waterproof rated featuring reliable electrical components backed by a limited 3-year warranty. It's robust clutch design is based on 70+ years of WARN 4WD hub knowledge. VRX winches have a smooth 3-stage planetary gear train and other mechanical parts backed by WARN's limited lifetime warranty.



WARN VRX45

VRX45 4500-lb. winch comes with 50 ft of 1/4-in. steel cable & roller fairlead; install kit includes rocker switch, mounting plate, solenoid, and wiring.

WARN VRX45 PROWLER PRO & CREW - 10002695
(INCLUDES WINCH MOUNT INSTALLATION KIT)

WARN VRX45 PROWLER PRO INSTALL KIT - 10008510

WARN VRX45 PROWLER PRO CREW INSTALL KIT - 10008512



WARN VRX35

VRX35 winch comes with 50 ft of 7/32-in. steel cable & roller fairlead; rocker switch, solenoid, and wiring included in install kit.

WARN VRX35 (MOUNTS DIRECTLY TO CHASSIS) - 3436-114

WARN VRX35 ALTERRA 600 INSTALL KIT - 3436-115



WARN VRX25

VRX25 winch comes with 50 ft of 3/16-in. steel cable & roller fairlead; rocker switch, solenoid, and wiring included in install kit.

WARN VRX25 (MOUNTS DIRECTLY TO CHASSIS) - 3436-106

WARN VRX25 ALTERRA 450 INSTALL KIT - 3436-113



WARN VRX35-S

VRX35-S 3500-lb. winch comes with 50 ft of 3/16-in. Spydura synthetic rope & hawse fairlead; solenoid, wiring, and rocker switch also included.

WARN VRX35-S - 3436-000

FRONT WINCH BUMPER - 2436-846

⚠ WARNING: Cancer and Reproductive Harm - www.P65Warnings.ca.gov.

This WARNING applies to all items that can be ordered on this page.



WARN VRX WINCH ACCESSORIES



SYNTHETIC ROPE UPGRADE

Replace your standard steel cable with a stronger Spydura synthetic rope. Offering better fatigue resistance, and especially efficient for angled pulls, synthetic rope is an ideal upgrade for repetitive winching and snow plow operation. Avoid pointy burs with safer handling of the rope's burly rock guard sleeve.

SPYDURA SYNTHETIC ROPE FOR WARN VRX45 - 2441-113

SPYDURA SYNTHETIC ROPE FOR WARN VRX35 - 0541-570

PROWLER PRO & WILDCAT XX HAWSE FAIRLEAD - 2441-932

ALTERRA 600 HAWSE FAIRLEAD - 2441-935



WIRELESS CONTROL KIT

Operate your winch from up to 50-ft. away with wireless controls that are plug-and-play with WARN VRX winches.

WARN WIRELESS REMOTE UPGRADE KIT - 2436-110



SNOW PLOW FAIRLEAD ROLLER

Designed to help alleviate the wear caused by repetitive winching at steep cable angles, the Plow Roller Fairlead is highly recommended to increase longevity for those operating a plow with steel cable winches or synthetic rope.

PLOW ROLLER FAIRLEAD - ALTERRA 450 & ALTERRA 600 - 2441-931

PLOW ROLLER FAIRLEAD - PROWLER PRO & PROWLER PRO CREW - 2441-934

ARCTIC CAT PLOWS

ARCTIC CAT SPEEDPLOWS OFFER AN ADJUSTABLE QUALITY SNOW PLOW PACKAGE WITH FAST & TOOLLESS BLADE MANAGEMENT.

WARN VRX WINCH ACCESSORIES

Arctic Cat SPEEDPlows require a compatible winch for operation. Please navigate to Page 8-9 and see all of our WARN winch offerings. Note that some Arctic Cat models come equipped standard with a compatible winch, but it's highly recommended to install a Plow Roller Fairlead and upgrade to Spydura synthetic rope.



SPEEDPLOW PUSH FRAME & MOUNTS

A quick-attach lever and winch aid hook makes blade installation and removal take only seconds. Using a foot release, the plow angle can be adjusted to one of 5 different positions.

Alterra 450 - 2436-534

Alterra 600 - 3436-137

Prowler Pro & Prowler Pro Crew - 2436-676

BLADES & ACCESSORIES



STEEL BLADES - ALTERRA 450/600

Built from stamped steel and purpose fit for the SPEEDPlow system, these blades are install-ready for edge markers, drift cutters, and curb finders.

53-IN. x 17-IN. H STEEL - 2436-991

66-IN. x 17-IN. H STEEL - 2436-993 (600 ONLY)

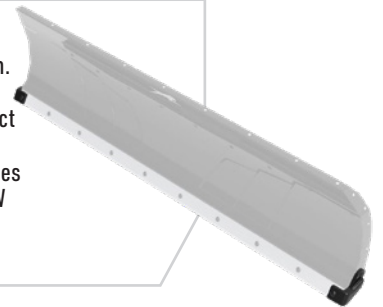


STAY WARM Plowing in the cold doesn't have to be bitter. Check out some of our cold weather accessories such as **Deluxe Hand Warmers** (2436-881) and **Handlebar Muffs** (2436-990) for your Alterra 450/600. Keep your Prowler Pro cab cozy with a **Heater Kit** (2436-650), **Hard Doors** (3436-1765 Front/3436-175 Rear), and your choice of compatible top and windshield options.

CURB FINDERS

Heavy-duty, powder-coated 0.25-in. stamped steel plate protects the plow from damage caused by contact with curbs. Curb finders are easy to install on any SPEEDPlow blade. Does not work with drift cutters or UHMW wearbar. Sold in pairs.

2436-275



EDGE MARKERS

Increase visibility and know exactly where your blade edges are with these easy-install markers. Great when snow is piled high and light levels are low.

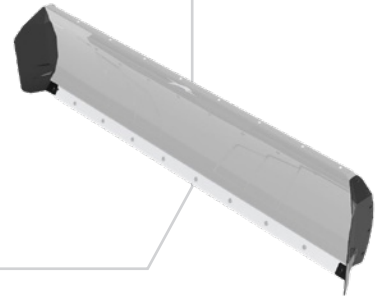
2436-277



DRIFT CUTTERS

Move and control more snow while making cleaner passes with drift cutters installed on your SPEEDPlow blade. Sold in pairs.

66-IN. | 72-IN. BLADES - 2436-302



STEEL & POLY BLADES - PROWLER PRO & PROWLER PRO CREW

Built from stamped steel and purpose fit for the SPEEDPlow system, these blades are install-ready for edge markers, drift cutters, and curb finders.

66-IN. x 20-IN. H STEEL - 2436-297

72-IN. x 20-IN. H STEEL - 2436-298

72 inches of lightweight polyethylene blade help reduce wear-and-tear to your vehicle while clearing snow with it's 20-inch tall moldboard curve. Equipped with a steel wear bar for scraping, the blade also comes install-ready for edge markers and drift cutters.

72-IN. x 20-IN. H POLY - 2436-300

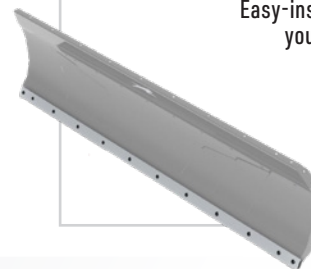
REPLACEMENT WEAR BAR

Easy-install steel wear bars to keep your plow in optimal condition.

53-IN. BLADE - 2436-316

66-IN. BLADE - 2436-317

72-IN. BLADE - 2436-318



ALTERRA 450



WINDSHIELDS

WINDGUARD 2 WINDSHIELD

- » Attach and remove in seconds with no tools required
- » Unique Arctic Cat Off Road-exclusive dust management system
- » Adjustable angle to optimize wind flow
- » Screen-printed graphics add style and accent vehicle body graphics
- » RAM mount ready and fits over 200 RAM accessories – visit www.rammount.com for the full lineup



2436-987 BLACK

'18-'24 ALTERRA 450

GUARDS

CYCRA M4 RECOIL HAND GUARDS

- » Maximum coverage for increased hand protection
- » Removable Shield Cover for vented or non-vented riding conditions
- » Patent Pending Recoil Technology allows handguards to swing out
- » 6061 T-6 Aluminum Mount Brackets for added strength
- » Complete Racer Pack includes: Shields, Brackets & Hardware



10006559

'18-'24 ALTERRA 450

MIRRORS

DUAL MIRROR KIT

- » Lightweight, easy to install
- » Provides excellent dual rearview vision
- » Black powder coating for a long-lasting finish
- » Rustproof



1436-510

'18-'24 ALTERRA 450

BUMPERS

BRUSHGUARD BUMPERS

- » Protects grille, rack and lights from brush and debris
- » Contoured to fit the front of your Arctic Cat Off Road ATV
- » Durable protection with rust-inhibiting, powder-coated steel
- » Withstands abuse with a burly, heavy-duty 1.5-in. center-tube section
- » Ideal for use with Arctic Cat Off Road winch kits



2436-506

'16 ALTERRA 450 MODELS

REAR BUMPERS

- » Custom designed for protection of rear frame, muffler, fenders and taillights
- » Durable, 1.5-in. dual-tube, powder-coated steel construction
- » 4-point mounting to the upper and lower frame for added strength



2436-507

'20-'24 ALTERRA 450 MODELS

COLD-WEATHER GEAR

HANDLEBAR MUFFS

- » Water- and wind-resistant nylon outer
- » Easy-attach hook-and-loop fastener straps with an elastic grip strap



2436-990

'18-'24 ALTERRA 450

HAND WARMERS

- » Easy-to-install kit with 3-position (high/low/off) toggle switch
- » Secure molded connectors and replacement grips
- » Pod-mounted, 3-position rocker switch and easy-install wiring
- » Requires Grip-It Glue (0441-510)



1436-271

'18-'24 ALTERRA 450

ALTERRA 600





N
K
K

WINDSHIELDS

WINDGUARD™ 2 WINDSHIELD

- » Attach and remove in seconds with no tools required
- » Adjustable angle to optimize wind flow
- » Screen-printed graphics add style and accent vehicle body graphics
- » RAM® mount ready and fits over 200 RAM accessories

*GPS cannot be installed with windshield



2436-987 BLACK

ALTEERRA 600 EPS, XT, LTD, SE & ALTEERRA 600 TRV EPS, XT, LTD

GUARDS

CYCRA M4 RECOIL HAND GUARDS

- » Maximum coverage for increased hand protection
- » Removable Shield Cover for vented or non-vented riding conditions
- » Patent Pending Recoil Technology allows handguards to swing out
- » 6061 T-6 Aluminum Mount Brackets for added strength
- » Complete Racer Pack includes: Shields, Brackets & Hardware



10006559

ALTEERRA 600 EPS, XT, LTD, SE & ALTEERRA 600 TRV EPS, XT, LTD, MUD PRO & BLACK HILLS EDITION

MIRRORS

DUAL MIRROR KIT

- » Lightweight, easy to install
- » Provides excellent dual rearview vision
- » Black powder coating for a long-lasting finish
- » Rustproof



1436-510 ALTEERRA 600 EPS, XT, LTD & SE, ALTEERRA TRV EPS, XT, & LTD, MUD PRO & BLACK HILLS EDITION

BUMPERS

ULTIMATE FRONT BUMPER KIT

- » Protects grille, rack and lights from brush and debris
- » Durable protection with rust-inhibiting, powder-coated steel
- » Withstands abuse with a burly, heavy-duty 1.5-in. center-tube section
- » Ideal for use with Arctic Cat Off Road winch kits



3436-221- BLACK TEXTURE

ALTEERRA 600 EPS, XT, LTD, SE AND ALTEERRA 600 TRV EPS, XT, LTD

REAR BUMPER

- » Custom designed for protection of rear frame, muffler, fenders and taillight
- » Durable, 1.75-in. dual-tube, powder-coated steel construction
- » 6-point mounting to the upper and lower frame for added strength



3436-220- BLACK TEXTURE

ALTEERRA 600 EPS., XT, LTD, SE, MUD PRO & BLACK HILLS EDITION

3436-159- BLACK TEXTURE

ALTEERRA 600 TRV EPS, XT, LTD

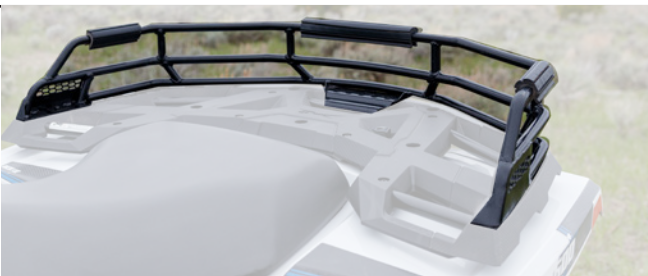
STORAGE

RACK EXTENSION

- » Maximize rack capacity with a 3-in. or 6-in. steel rack extension
- » Featuring rubber bumpers to help protect cargo
- » Includes manual attachment system
- » Upgradeable to the accessory SpeedLock™ attachment system



2436-119 3-IN. ALTERRA 600 LTD, SE & ALTERRA TRV LTD & BLACK HILLS EDITION



2436-120 6-IN. ALTERRA 600 LTD, & SE & ALTERRA TRV LTD

SPEEDLOCK

- » Drop-in system quickly attaches with easy-to-use thumb locks
- » Durable cast-aluminum components with one-click unlocking for fast removal
- » Cover is constructed of supple Duro 60 silica rubber
- » Cover retains mechanical mobility of SpeedLock in severe cold weather conditions



2436-501 ALTERRA 600, LTD & SE, ALTERRA TRV & LTD, MUD PRO
& BLACK HILLS EDITION

2436-540 - COVER SPEEDLOCK (2436-501, 2436-122)

SPEEDRACK BACKREST

- » Offers excellent, fully padded lumbar support
- » Adjustable mounting positions for custom comfort
- » SpeedLock attachment included



2436-143

ALTERRA 600 LTD, SE, MUD PRO & BLACK HILLS EDITION

ALTERRA 600 STORAGE BAGS

WITH STORAGE OPTIONS LIKE A FRONT CENTER BAG, REAR CENTER BAG, AND DUAL SIDE BAGS, OUR ALTERRA 600 MODELS CAN NOW FIT AND CARRY MORE THAN EVER BEFORE.

- » Create your preferred storage system with these modular cargo bags.
- » Each bag is built around an internal semi-rigid shell to prevent sag and make stowing easy.
- » A compression molded lid latches over a zipper-sealed compartment to protect your personal items and equipment.
- » Attach to your cargo racks with simple and easy adjustable straps that click in place.



CENTER BAG FRONT

6.5-in. height accommodates a variety of on-the-go items.

ALTERRA 600 EPS, XT, LTD, SE & ALTERRA 600 TRV EPS, XT, LTD & BLACK HILLS EDITION - **2436-177**



SIDE BAGS

Works with center bags (2436-177 and 2436-185) or as a stand-alone.

ALTERRA 600 EPS, XT, LTD, SE & ALTERRA 600 TRV EPS, XT, LTD, MUD PRO & BLACK HILLS EDITION - **2436-184**



CENTER BAG REAR

11-in. height is large enough for medium-to-large items, like helmets and other gear.

ALTERRA 600 EPS, XT, LTD, SE, MUD PRO & BLACK HILLS EDITION - **2436-185**



RACK BAG

- » Durable, ballistic nylon with reinforced bottom
- » Water-resistant zippers
- » Features 3 large openings with 2 removable dividers
- » Easy hook-and-loop fastener attachment



2436-176 ALTERRA 600 LTD, SE & ALTERRA TRV LTD & BLACK HILLS EDITION

FENDER BAG

- » Compression-molded body with hinged magnetic lid
- » Magnetic lid closure provides secure storage without straps
- » Snap-in insert for added organization of small items
- » Rack-attachment hook installs and detaches in seconds



2436-515 ALTERRA 600 LTD & SE, ALTERRA TRV, & LTD, MUD PRO & BLACK HILLS EDITION

VEHICLE COVERS

STORAGE COVER

- » Wards off sun, moisture and dust with urethane-coated, 150-denier polyester
- » Snug, custom fit from elastic stretch cords

**Not for trailering*



3436-032 ALTERRA 600 EPS, XT, LTD & SE, ALTERRA TRV EPS XT, & LTD, MUD PRO & BLACK HILLS EDITION

COLD-WEATHER GEAR

HANDLEBAR MUFFS

- » Water- and wind-resistant nylon outer
- » Easy-attach hook-and-loop fastener straps with an elastic grip strap



2436-990 ALTERRA 600 EPS, XT, LTD & SE, ALTERRA TRV EPS XT, & LTD, MUD PRO & BLACK HILLS EDITION

HAND WARMERS

- » Easy-to-install kit with 3-position (high/low/off) toggle switch
- » Secure molded connectors and replacement grips
- » Requires Grip-It Glue (0441-510)
- » Pod-mounted, 3-position rocker switch and easy-install wiring



1436-271

ALTERRA 600 EPS, XT, LTD & SE, ALTERRA TRV EPS XT, & LTD

GRIP-IT-GLUE

0441-510

UNIVERSAL

ATV TIRE CHAINS

- » Gives maximum traction on snow and ice
- » Made from hardened steel with a grippy V-bar design
- » Easy-attach, secure, solid fit
- » 2 sizes available
- » Sold in pairs
- » For use on rear tires only



0436-026 SIZE B

24-IN. & 25-IN. TIRES (REAR)

0436-027 SIZE C

25-IN. & 26-IN. TIRES (REAR)

PREMIUM SEAT

- » Composed of premium material
- » More padding increases rider comfort
- » More durable outer cover
- » 2-toned



0517-228 DARK GRAY

ALTERRA 600 MODELS

AIRBOX FILTER MINDER KIT

- » Maximize equipment efficiency, uptime, and performance
- » Helps you effectively schedule service intervals and maximize filter life
- » Gauge shows when filter needs to be replaced

3436-230

ALTERRA 600 MODELS

BATTERY UPGRADE KIT

- » Bigger is better. Upgrade to a larger battery with increased capacity and cold cranking amps. Ideal for running multiple accessories or plowing snow
- » 30AH (65% more)
- » 400 CCA (30% more)
- » Includes mounting bracket and battery

3436-223

ALTERRA 600 MODELS & TRV

BLOCK HEATER SYSTEM



2436-663

ALTERRA 600 & TRV

PROWLER PRO/CREW





N
N
N

MADE TO MAKE YOUR OWN

Mix and match any of the custom built accessories to create your perfect Prowler Pro!

WINDSHIELDS

- 1 TILT-OUT WINDSHIELD - 3436-111**
 - » Hard-coated, scratch resistant polycarbonate windshield
 - » 3-position adjustability for maximum airflow or sealed protection
 - » Gas-assisted opening from either passenger or driver side
- 2 FULL CURVED GLASS WINDSHIELD - 3436-110**
 - » Safety-rated laminated glass with double curved profile
 - » Quick-connect mounting latches
- 3 FULL WINDSHIELD (HARD-COATED) - 2436-618**
 - » Scratch resistant hard-coated polycarbonate material
 - » Dual vent locations for improved airflow
 - » Quick-connect mounting latches
- 4 FULL WINDSHIELD - 2436-617**
 - » Polycarbonate material with quick-connect mounting



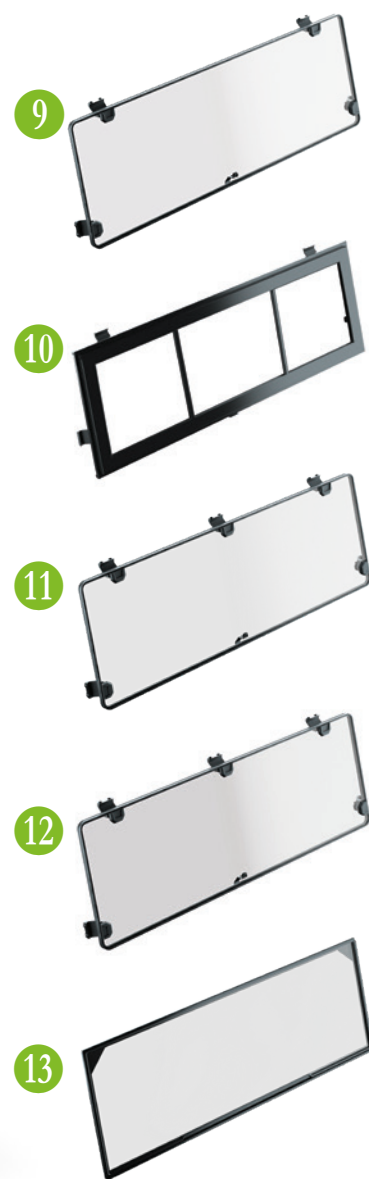
Build your own Prowler Pro
at arcticcat.com/side-by-side

TOPS

- 5 HARD-TOP - 2436-610
2436-649 - CREW**
 - » Textured polyethylene provides overhead coverage from the elements and sun
 - » Compatible with Overhead Console (2436-615) and Light Rail (2436-667)
- 6 BIMINI TOP - 2436-613
2436-614 - CREW**
 - » Provides full overhead coverage with water-repellent and Series 70 UV-resistant fabrics
 - » 3-point adjustable attachment system for ease of installation

DOORS

- 7 SOFT DOORS - 2436-627 - FRONT
2436-628 - REAR**
 - » Provides full coverage with water-repellent and series 70 UV-resistant fabric
 - » Zippered windows easily stow away
 - » Integrated frame for structure
- 8 HARD DOORS - 3436-176 - FRONT
3436-175 - REAR**
 - » Full-size composite doors provide tight sealing with premium fit and finish
 - » Impact resistant materials, including DOT tempered glass windows, provide quality protection
 - » Fully finished interior panels include built-in storage pockets
 - » Integrated arm rests and roll-down windows offer elevated comfort



REAR WINDOWS

9 SLIDING REAR GLASS WINDOW - 2436-624

» Safety-rated laminated glass rear window, slides open for airflow and quick access

10 REAR GLASS WINDOW - 2436-621

» Safety-rated laminated glass rear window with quick-connect mounting latches

11 REAR WINDOW (HARD-COATED) - 2436-623

» Hard-coated rear polycarbonate material is scratch resistant with quick-connect mounting latches

12 REAR WINDOW - 2436-622

» Rear Polycarbonate Window with quick-connect mounting

13 SOFT REAR WINDOW - 2436-677

» Durable polyester fabric with a clear-view window
» Easy installation

ROOFS

PREMIUM COMPOSITE ROOF

- » Composite hard top with impact resistance, durability, and weatherability
- » Superior sealing to ROPS
- » Compatible with overhead console, liner kit, and light rail
- » Compatible with all door, windshield, and window combinations
- » Custom mounting locations for 2 light bars (Requires overhead console 2436-615 and harness 2436-667)



3436-065

PROWLER PRO

PREMIUM ROOF LINER

- » Automotive-like roof liner with soft-touch fabric
- » Reduces vehicle noise
- » Compatible with Premium Composite Roof (Required 3436-065)

3436-067

PROWLER PRO

WINDSHIELDS

HALF WINDSHIELD (HARD-COATED)

- » Scratch resistant hard-coated polycarbonate material
- » Diverts wind over driver and passenger
- » Quick-connect mounting latches
- » Compatible with all door, roof, and window combinations



2436-620

PROWLER PRO & PROWLER PRO CREW

HALF WINDSHIELD

- » Scratch resistant hard-coated polycarbonate material
- » Compatible with all door, roof, and window combinations



2436-619

PROWLER PRO & PROWLER PRO CREW

WINDSHIELD WIPER – KIT

- » Keep dirt, dust, and water off the windshield with this electric windshield wiper
- » Wide-range clearing for driver and passenger
- » Wiper kit can be used with the 2436-616 or 3436-110 Glass Windshield only



2436-653

PROWLER PRO

WINDSHIELD WASHER KIT

- » Adjustable spray pattern
- » Works with 2436-616 or 3436-110 Glass Windshield and 2436-653 Windshield Wiper Kit (Sold separately)
- » Includes half-gallon tank, 12-volt pump, wiring harness, mounting hardware, and instructions



2436-654

PROWLER PRO

SUN VISOR KIT

- » Ratchet system allows for easy adjustment into multiple positions
- » Attaches to overhead ROPS structure
- » 16-in. wide and 5-in. tall



2436-679

PROWLER PRO

HEATERS

CAB HEATER SYSTEM

- » All dash-mounted controls
- » Adjustable vent control for defrosting the face and foot areas
- » Comes with 6 vents - 2 defrost, 2 dash and 2 feet



2436-650

PROWLER PRO & PROWLER PRO CREW

BLOCK HEATER SYSTEM



2436-663

PROWLER PRO & PROWLER PRO CREW

BUMPERS

PREMIUM FRONT BUMPER

- » Added vehicle protection with an OEM styled 1.75-in. steel tubular bumper
- » Finished with black textured paint and install-ready for your winch fairlead



3436-236-BLACK TEXTURED

PROWLER PRO & PROWLER PRO CREW

PREMIUM REAR BUMPER

- » Provides added vehicle protection
- » Stylized protection constructed of rugged 1.75-in. tubular steel and finished with premium textured paint



3436-232- BLACK TEXTURE

PROWLER PRO & PROWLER PRO CREW

CENTER GRILLE GUARD

- » Additional frontal structure
- » Mounts directly to front bumper 8506-663
- » Center section of grille guard



2436-631

'19-20 PROWLER PRO & PROWLER PRO CREW*

'23 PROWLER PRO S & PROWLER PRO CREW S

*EXCLUDES FIT IF EQUIPPED WITH PREMIUM OR RANCH STYLE BUMPER

HEADLIGHT BRUSHGUARDS

- » Additional structure and protection
- » Mounts directly to front bumper 8506-663
- » Grille Guard (2436-631) required for installation and use
- » Not intended for towing



2436-632

'19-20 PROWLER PRO & PROWLER PRO CREW*

'23 PROWLER PRO S & PROWLER PRO CREW S

*EXCLUDES FIT IF EQUIPPED WITH PREMIUM OR RANCH STYLE BUMPER

REAR BUMPER

- » All-metal, stamped steel construction for premium protection
- » Finished with black textured paint



2436-633 BLACK TEXTURE

PROWLER PRO & PROWLER PRO CREW

FRONT A-ARM GUARDS

- » Thick polyethylene guards
- » Mounts to lower suspension arms in front of CV boots



2436-640

PROWLER PRO & PROWLER PRO CREW

HEADACHE RACK

- » Added protection of occupants and rear window
- » All-metal construction
- » Installs to front edge of cargo bed



2436-636

PROWLER PRO & PROWLER PRO CREW

STORAGE

CENTER SEAT CONSOLE

- » Center storage compartment with weather-resistant lid
- » Cup holders and documents storage slot
- » Swappable with center seat
- » Snap-in install: no tools required



2436-669

PROWLER PRO & PROWLER PRO CREW

UNDER-SEAT STORAGE BOX

- » Large under-seat storage compartment
- » Frontal weather-resistant access doors (3)



2436-670

PROWLER PRO & PROWLER PRO CREW

ELECTRO-HYDRAULIC BED KIT

- » Unloading made easy with the flip of a switch
- » Add this electric actuator to your Prowler and you can easily dump your cargo box from your seat
- » Complete custom kit includes everything needed for installation



2436-662

PROWLER PRO & PROWLER PRO CREW

INTERIOR/CAB

OVERHEAD CONSOLE

- » Molded overhead console houses electrical wiring and includes storage pockets
- » Includes rocker switch mounting panel
- » Required for use with windshield wipers and overhead lighting
- » Compatible with all roof options



2436-615

PROWLER PRO & PROWLER PRO CREW

SIDE MIRROR

- » Oversized mirror face incorporates multiple viewing positions
- » Adjustable and impact resistant with breakaway feature
- » Works on driver or passenger side
- » Requires mount (sold separately)
- » Sold individually
- » Requires one of the following mounts 1541-753, 1541-754 or 1541-755



2436-629

PROWLER PRO & PROWLER PRO CREW

ROPS SIDE MIRROR MOUNT

- » Allows mounting to Prowler Pro ROPS

1541-753

PROWLER PRO & PROWLER PRO CREW

HARD DOOR SIDE MIRROR MOUNT (LEGACY)

- » Allows mounting to Composite Doors (2436-625 & 3436-089)

1541-754

HARD DOOR SIDE MIRROR MOUNT

- » Allows mounting to Composite Doors (3436-176)

1541-986

SOFT DOOR SIDE MIRROR MOUNT

- » Allows mounting to Soft Doors (2436-627) or flat surface

1541-755

REARVIEW MIRROR (CENTER)

- » Curved mirror for wider viewing range
- » Surface mounts to upper ROPS
- » Fully adjustable



2436-630

PROWLER PRO & PROWLER PRO CREW

SECOND BATTERY BOX

- » Adds additional mounting for second 12V battery to double electrical capacity
- » Second battery connects to current battery in parallel
- » Additional battery sold separately (PN 1436-651)



2436-957

PROWLER PRO

WILDCAT XX

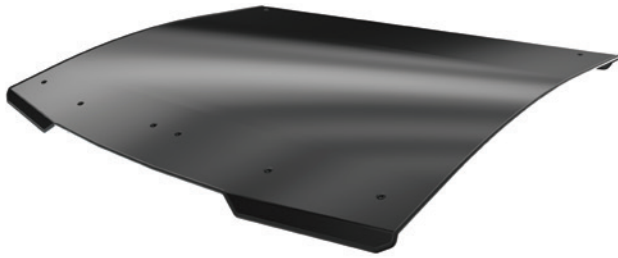




ROOFS

ALUMINUM ROOF

- » Full-coverage aluminum roof
- » Integrated roof mounts for direct mounting to ROPS



2436-436

WILDCAT XX

HARD TOP

- » Durable polyethylene construction provides overhead coverage from the elements and reduces exposure to the sun
- » Front water gutter directs water away from occupant
- » Optional front seal included - Install to keep the elements out, leave off to increase airflow



2436-821

'18-'23 WILDCAT XX MODELS

DELUXE BIMINI TOP WITH SUNROOF

- » Full Bimini top with integrated screen
- » Secures with adjustable straps
- » Roll-forward panel opens screen area



2436-443

WILDCAT XX

STANDARD BIMINI TOP

- » Full bimini top
- » Secures with adjustable straps



2436-451

WILDCAT XX

WINDLOCK™ CHANNEL SEAL KIT

- » Provides front sealing for bimini top to full polycarbonate windshield

2436-495

WILDCAT XX

WINDSHIELDS

FULL WINDSHIELD

- » Full windshield provides great coverage
- » Hard-coated polycarbonate for superior scratch resistance
- » Full-wrap ROPS clamps for secure attachment
- » Upper vents (2) to control airflow

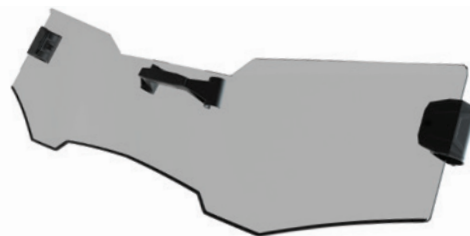


2436-432

WILDCAT XX

HALF WINDSHIELD

- » Quick-connect mounting latches
- » Hard-coated polycarbonate for superior scratch resistance
- » Full-wrap ROPS clamps provide secure attachment



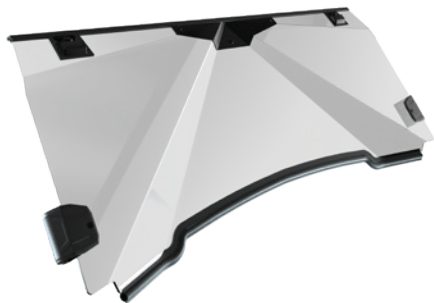
2436-433

WILDCAT XX

REAR WINDOWS

REAR WINDOW

- » Full rear window
- » Sealed perimeter
- » Full-wrap ROPS clamps provide secure attachment



2436-437

WILDCAT XX

SOFT REAR WINDOW

- » Clear-view vinyl window panel
- » Integrated mounting secures to ROPS
- » Provides full closure of rear panel



2436-444

WILDCAT XX

BACK NET

- » Race-inspired design
- » Durable webbing
- » Adjustable strap mounts



2436-446

WILDCAT XX

BUMPERS

FRONT BUMPERS

- » Steel tube construction (1.5-in. main tube, 1.25-in. supports)
- » Provides added protection to grille and headlights
- » Direct mounting to frame with 12 mm bolts



2436-430 BLACK

2436-440 MEDIUM GREEN

WILDCAT XX

REAR BUMPERS

- » Steel tube construction (1.5-in. main tube, 1.25-in. supports)
- » Provides added protection to rear of vehicle
- » Direct mounting to frame with 12 mm bolts



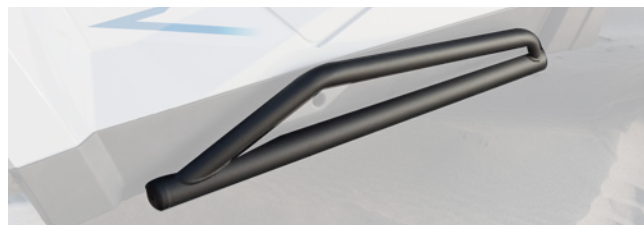
2436-431 BLACK

2436-441 MEDIUM GREEN

WILDCAT XX

SIDE RAILS

- » Steel tube construction (1.5-in. main tube)
- » Provides added side-panel protection in rugged conditions
- » Integrated mounting for ease of installation



2436-435 BLACK

2436-475 MEDIUM GREEN

WILDCAT XX

CARGO STORAGE

KICK PANEL BAGS

- » Expanded storage
- » Conveniently fit to optimize storage
- » Sold in pairs



2436-452

WILDCAT XX

SHOULDER BAG

- » Expanded storage
- » Mounts between seats for easy access



2436-453

WILDCAT XX

ROPS BAGS (PAIR)

- » Expanded storage
- » Designed to fit ROPS profile
- » Sold in pairs



2436-462

WILDCAT XX

CARGO BOX NET

- » Expandable elastic webbing
- » Secures with coated hooks
- » Universal application



2436-454

WILDCAT XX

SPARE TIRE HOLD-DOWN

- » Secures spare tire in the cargo bed
- » Features lug wrench sockets on the ends of the handles



2436-455

WILDCAT XX

MIRRORS

SIDE MIRRORS, BILLET

- » Billet aluminum construction
- » 1.75-in. ROPS mounting
- » Fully adjustable
- » Sold in pairs



2436-483

WILDCAT XX

REARVIEW MIRROR

- » Curved mirror for wider viewing range
- » Billet aluminum construction
- » 1.75-in. ROPS mounting
- » Adjustable positioning



2436-484

WILDCAT XX

Want more?

Visit shop.arcticcat.com or
Find your local dealer at
arcticcat.txtsv.com/shopping-tools/find-dealer



UNIVERSAL



ELECTRONICS

STYLE 21 TO STUD BLOCK ADAPTER

- » Converts Style 21 accessory connector to stud block to utilize harnesses with ring terminals

676666

UNIVERSAL FITMENT ON ALL WILDCAT, PROWLER, HDX, STAMPEDE, HAVOC & ATV MODELS

ACCESSORY STUD BLOCK TO STYLE 21 CONVERTER

- » Converts stud block accessory connections to Style 21 connector

676665

UNIVERSAL FITMENT ON ALL WILDCAT, PROWLER, HDX, STAMPEDE, HAVOC & ATV MODELS

ACCESSORY PLUG KIT

- » Powers 12-volt DC accessories from a cigarette-lighter-style outlet
- » 15 amps max



0436-435

UNIVERSAL FITMENT ON ALL WILDCAT, PROWLER, HDX & ATV MODELS

ACCESSORY EXTENSION HARNESSES

- » Used to extend any Style 21 accessory plug
- » Allows you to add lights where you want them



1436-834 24-IN.

1436-643 66-IN.

UNIVERSAL FITMENT ON ALL WILDCAT, PROWLER, HDX & ATV MODELS

ELECTRICAL PLUG

- » Add 12-volt DC accessory plug (Style 21) to your vehicle
- » Links power to trailered accessories with a 12-volt DC connection
- » 12-in. plug-in link
- » 15 amps max



0436-087

UNIVERSAL FITMENT ON ALL WILDCAT, PROWLER, HDX & ATV MODELS

SWITCH

- » Non-backlit on/off switch for additional accessories
- » Fits into Wildcat, Wildcat Trail, Wildcat Sport and Prowler dash ports



1436-178

UNIVERSAL FITMENT ON ALL WILDCAT, PROWLER, HDX & ATV MODELS

BACKLIT SWITCH

- » Designed for use with led light bars



0490-204

UNIVERSAL FITMENT ON ALL WILDCAT, PROWLER, HDX & ATV MODELS

SWITCH MOUNT PANEL KIT

- » Includes switch panel and 2 plugs for installing added accessories
- » Accommodates rectangular-style switches



1436-008

UNIVERSAL FITMENT ON ALL WILDCAT, PROWLER, HDX & ATV MODELS

ACCESSORY ADAPTERS

- » Conveniently plugs into 12-volt accessory plug (Style 21)
- » Powers multiple 12-volt accessories
- » 15 amps max
- » Can be used on Alterra 600 models



1639-623 2-OUTLET

1639-624 3-OUTLET

UNIVERSAL FITMENT ON ALL WILDCAT, PROWLER, HDX & ATV MODELS

TIRES & WHEELS

K590

- » 12-in. wheels made of steel and 25-in. tires
- » Wide footprint design which gives the tire exceptional traction in many terrain styles
- » Directional tread pattern for exceptional traction and self cleaning in muddy conditions



- 2502-794-LH - FRONT**
- 2502-795-RH - FRONT**
- 2502-796-RH - REAR**
- 2502-797-LH - REAR**

UNIVERSAL ATV

BEAR CLAW EVO

- » 14-in. aluminum wheels and 26-in. tires
- » Designed to reduce weight without sacrificing durability
- » Tread pattern is designed to perform across all terrains



- 2502-936 - RH - FRONT**
- 2502-937 - LH - FRONT**
- 2502-938 - RH - REAR**
- 2502-939 - LH - REAR**

UNIVERSAL ATV

ZILLA TIRE AND WHEEL ASSEMBLIES

- » 14-in. wheels made of aluminum and 28-in. Maxxis Zilla tires
- » Superb mud traction and outstanding trail riding
- » Light and fast
- » Lug nut required



- 2502-893 - LH, FRONT**
- 2502-894 - RH, REAR**
- 2502-892 - RH, FRONT**
- 2502-995 - LH, REAR**

UNIVERSAL ATV

TIRE SEALANT

- » Special formulation with unique sealing fibers to create a permanent seal
- » Seals punctures up to 0.5-in. diameter
- » Prevents air loss from slow leaks around bead and valve stem
- » Includes valve core wrench and installation tube
- » 32-oz. bottle



0436-913

ACCESSORIES

STANDARD TIE-DOWNS

- » Secures ATV to trailer with high-quality, durable, 69-in. nylon straps
- » 1,000-lb. rating; sold in pairs



7639-183

TOW STRAP WITH CLEVIS

- » 10,000-lb. tensile strength for durability
- » Heavy-duty, 20-ft. tow strap with included storage bag
- » Looped at ends with easy-attach, rust-resistant, zinc-plated shackles



0436-448

REGISTRATION PLATE

- » 4-in. x 7.75-in. aluminum plate
- » Powder-coat finish
- » Includes letter assortment, coated clamps and hardware

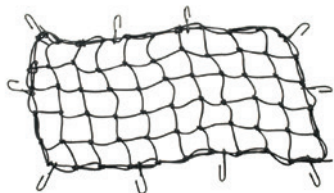


2436-286 BLACK

2436-287 WHITE

CARGO NET

- » Versatile 15-in. x 30-in. net with coated steel hooks
- » Secures cargo or other items to rack



0436-449

UNIVERSAL ATV

TRAILSIDE KIT

- » Includes all trail repair essentials, including: air compressor, tire repair kit, jumper cables, ratchet tie-down straps, tow strap, zip ties, duct tape, cloth rags and first aid kit



2436-989

UNIVERSAL

GRAB HANDLES

- » Convenient multi-use grab handles for ROPS
- » Features nonslip grip connection
- » Sold in pairs



2436-490

FITS ALL WILDCAT, PROWLER & HDX MODELS

HITCH LOCK

- » Durable hardened steel with black finish and quarter-turn lock
- » Tubular key won't bend, cannot be false-locked
- » Dust cap included
- » Ideal for locking your winch carrier to the front winch mount



1436-855

5/8-IN. PIN FITS 2-IN. X 2-IN. RECEIVERS

BATTERY CHARGERS

BATTERY JUMP PACK

- » Quickly start your ATV/UTV
- » Lightweight, long-lasting 8,000 mAh lithium ion power source
- » Features LCD display, 2 USB charging ports and a powerful 3-mode LED light
- » Cranking current; 400A peak, 200A cranking
- » Includes smart cables, AC and 12-volt car charging adapter



2436-980

1.5A BATTERY MAINTAINER

- » Fully automatic maintainer for ATV/UTV batteries
- » Automatic voltage detection
- » Reverse hook-up protection
- » Includes alligator clips and ring terminal leads
- » 6V or 12V Output Voltage



8639-357

TOUCH-UP PAINTS

- » Color-matched paint in aerosol can
- SEE DEALER FOR PART NUMBERS

OIL & CARE

Refer to owner's manual for your vehicle's oil and lubricant specifications. All oil products are drop-shipped by supplier, potentially resulting in longer delivery time.

ACX 0W-40 SYNTHETIC OIL CHANGE KIT

- » Everything you need to properly service your ATV/ROV: ACX 4-cycle oil, oil filter and disposable funnel
- » See owner's manual for engine oil fill capacity specs



- | | |
|-------------------------|--|
| 2436-847 GALLON | WILDCAT XX; '04-'06 650 V-TWIN |
| 2436-848 GALLON | '17-'20 STEPEDE & HAVOC MODELS |
| 2436-849 GALLON | PROWLER PRO MODELS |
| 2436-850 GALLON | ALTERRA 600; PROWLER 500; '12-'19 WILDCAT X & 4X;
'14-'20 WILDCAT TRAIL & SPORT; '06-'17 PROWLER 550-1000 (ALL);
'96-'21 350-1000 ATV MODELS (EXCEPT 650 V-TWIN) |
| 2436-851 2 QUART | '17-'21 ALTERRA 570-700; '13-'19 MUDPRO 700-1000;
'07-'17 TBX 650-700; '09-'17 PROWLER 550-1000; '11-'17 HDX 700; '12-'17 1000 ATV;
'09-'16 550-700 ATV; '15 XR MODELS |

ACX 15W-50 SYNTHETIC OIL CHANGE KIT

- » Everything you need to maintain your oil system — 1 gallon of ACX 15W-50 4-cycle oil, oil filter and disposable funnel



- | | |
|------------------------|---|
| 2436-852 GALLON | '18-'23 WILDCAT XX MODELS; '04-'06 650 V-TWIN |
| 2436-855 GALLON | PROWLER 500;
'12-'19 WILDCAT X & 4X; '14-'20 WILDCAT TRAIL & SPORT; '06-'17 PROWLER 550-1000
(ALL); '96-'21 350-1000 ATV MODELS (EXCEPT 650 V-TWIN) |

ACX 0W-40 SYNTHETIC OIL

- » Advanced multi-grade
- » Superior rust and corrosion protection even during periods of non-use
- » Offers maximum engine performance along with unique shear-stable additive formula that prevents oil film buildup and sludge formation
- » ACX is wet-clutch certified for use in Arctic Cat Off Road wet-clutch engines
- » Automotive engine oils DO NOT meet the requirements for use in Arctic Cat Off Road ATVs equipped with a wet clutch

2436-858 QUART

2436-857 GALLON

2436-694 16 GALLON DRUM

2436-695 55 GALLON DRUM



ACX 15W-50 SYNTHETIC OIL

Arctic Cat Off Road's Full Synthetic 15W-50 is a heavier-viscosity formula of the original, proven Synthetic ACX 4-Cycle Oil. Formulated specifically for hot-weather use in Wildcat, Havoc, Stampede, Prowler and ATV models, it provides ultimate hot-temperature engine protection and prevents thermal breakdown in severe conditions. Can also be used in professional applications such as racing, construction, farm and ranch where the machine faces heavier loads and greater engine stress.

NOTE: Not recommended for use in ambient temperatures below 32°F — heavier viscosity will make starting more difficult in extreme cold. Original Synthetic ACX (0W-40) engine oil recommended for all-season use.



2436-860 QUART

2436-859 GALLON

4-CYCLE 10W-40 ATV ENGINE OIL

- » ATV 4-cycle oil for use with wet-clutch systems reduces component wear and maximizes transmission protection
- » Multi-grade mineral blended oil



2436-861 QUART

2639-103 16 GALLON DRUM

80W-90 GEAR LUBE

- » Extreme pressure, temperature-stable lubricant for tough conditions
- » Use in both front and rear differentials and transmissions



2436-863 QUART ALL MODELS FRONT & REAR AND MODELS WITH TRANSMISSIONS (EXCLUDES '17-'20 STAMPEDE; '18-'20 HAVOC FRONT DIFFERENTIAL; '08-'10 XTX; '09 XTXZ REAR DIFFERENTIAL & REAR TRANSAXLE MODELS)

80W-90 FRICTION-MODIFIED GEAR LUBE

- » Designed for optimum engagement in limited-slip differentials high viscosity index
- » Combats wear, oxidation, rust and corrosion



2436-864 9.3 OZ.

'08-'10 XTX & '09 XTXZ MODELS (REAR DIFFERENTIAL)

FRONT DIFFERENTIAL FLUID

- » Cools, lubricates, and protects front differential
- » Excellent anti-wear protection
- » Shear stable for longterm durability



2436-599 8 OZ.

'17-'20 STAMPEDE & HAVOC MODELS (FRONT DIFFERENTIAL)

SYNTHETIC EXTREME PRESSURE TRANSAXLE FLUID

- » Arctic Cat Off Road Synthetic Extreme Pressure Transaxle Fluid is a full-synthetic lubricant designed to provide complete lubrication and protection for transaxles
- » Lighter-viscosity formula is more fluid at cold temperatures and remains stable at high temperatures
- » Protects against wear, oxidation and corrosion
- » Long-life formula resists shearing



2436-865 41 OZ. WILDCAT XX; '14-'20 WILDCAT TRAIL & WILDCAT SPORT MODELS; '19-'22 PROWLER PRO MODELS – REAR TRANSAXLE

HIGH-PERFORMANCE GREASE

- » Provides superior stability at high temperatures
- » Protects against rust and corrosion in severe operating environments



2436-866 14-OZ. TUBE

FUEL TREATMENT

- » Dual-antioxidant formula protects fuel system
- » Stabilizes fuel for up to 2 years
- » Safe for all powersports applications
- » Ethanol compatible
- » Convenient measuring cup



2436-868 12 OZ.

DOT 4 BRAKE FLUID

- » Premium fluid designed with corrosion and oxidation inhibitors
- » Optimizes brake performance if moisture is introduced into the brake system



5639-848 12 OZ.

ANTIFREEZE 60/40 EXTENDED LIFE

- » Protects against freezing to -62°F and has boiling point of 270°F
- » Extended-Life Antifreeze has 3 times longer service life
- » Premixed and ready to pour



2436-871 GALLON

FUEL DE-ICER

- » Prevents system failure at cold temps
- » Safe on internal components
- » Water-absorbing isopropyl blend



0436-906 12 OZ.

OIL FILTERS

- » Premium replacement oil filters
- » Exclusively designed for Arctic Cat Off Road ATVs/ROVs



0812-130

105041

0812-110

0812-135

WILDCAT XX

STAMPEDE & HAVOC MODELS

PROWLER PRO MODELS

ALTRERA 600, PROWLER 500 MODELS; 366-1000 ATV MODELS
(EXCLUDES DIESEL & DVX & 650 V2);
WILDCAT X, 4X, TRAIL & SPORT MODELS;
550, 700, & 1000 PROWLER MODELS (ALL)

VEHICLE WASH & CLEANER

- » Concentrated liquid cleaner
- » Superior cleaning ability on heavy mud, trail film, and grease
- » Dries streak and spot free
- » Biodegradable and environmentally friendly



4639-630 5 GALLON

4639-629 30 GALLON

UNIVERSAL

HEAVY DUTY CLEANER & DEGREASER

- » Highly concentrated liquid cleaner
- » Removes dirt, oil, and grease from floors, walls, parts, and engines
- » Biodegradable plant based solvents help dissolve and remove tree sap, adhesives and paint
- » Excellent product in water based parts washers



4639-637 1 GALLON

4639-636 5 GALLON

4639-635 30 GALLON

UNIVERSAL

FLOOR DRY

- » Quickly and easily soaks up spills
- » Multi-purpose product absorbs chemicals, grease, oil, and water
- » Low dust clean up

6639-918 25 LBS

MAINTENANCE

SPARK PLUGS



412159

0217-799

2022-2024 ALTRERA ATV
2016-2020 550, 570, 700, 1000 H2 ATVS, 2016-2018 PROWLER 700 AND
1000, 2016-2019 WILDCAT X MODELS

0217-730

2016-2024 300 ATV

0217-726

2016-2024 90

0217-632

2017-2022 PROWLER 500

3040-031

2019-2023 PROWLER PRO AND PROWLER PRO CREW

103763

2017-2020 STAMPEDE, 2018-2020 HAVOC

0217-814

2018-2024 WILDCAT XX

0217-813

2014-2020 WILDCAT SPORT AND TRAIL MODELS

0217-796

2016-2019 150 ATV

0217-705

2016-2019 400 ATV

0217-708

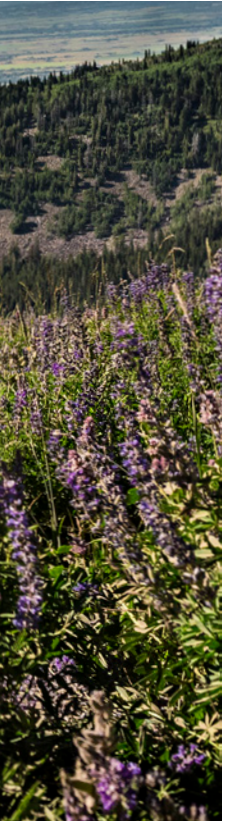
2016-2024 450, 2016-2020 500, 2016-2017 HDX 500

PAST MODELS



Take a ride through our parts and accessories offerings on some of our previous dirt models.





PROWLER 500



CABS

HARD CAB KIT

- » Complete kit includes full polycarbonate windshield, polycarbonate rear panel, formed HDPE roof and HDPE door panels attached to a rugged steel frame



2436-589

PROWLER 500

HARD DOOR KIT

- » HDPE door panels attached to a rugged steel frame
- » Removable upper panel allows for a half-door configuration
- » Inside hinges provide automotive finish



2436-399

PROWLER 500

SOFT CAB KIT

- » Kit includes roof/back panel and doors
- » 9-oz. Series 70 fabric provides high UV protection
- » Door window unzips and rolls up
- » Vinyl windows are rated for temperatures as low as -30°F
- » Urethane-coated fabric offers superior resistance to mold and mildew
- » Windshield not included



2436-367

PROWLER 500

SOFT TOP WITH REAR PANEL

- » 9-oz. Series 70 fabric provides high UV protection
- » WindLock Windshield System mounts directly to roof for complete overhead seal from the elements
- » One-piece top and rear panel
- » Back panel rolls up for airflow control
- » Windshield required for WindLock channel installation

2436-334

PROWLER 500

SOFT DOOR KIT

- » Made from 9-oz. Series 70 fabric provides high UV protection
- » Door window unzips and rolls up
- » Vinyl windows are rated at -30°F
- » Aluminum CNC-formed door frames for a lightweight and consistent fit



2436-242

PROWLER 500

ROOFS

PROWLER 500 HARD TOP

- » Formed HDPE construction
- » Textured to resist scratching



2436-241

'17-'21 PROWLER 500

BIMINI TOP

- » Series 70 fabric with water-repellent urethane coating provides superior durability and high UV resistance
- » 4-point attachment system makes for quick installation or removal
- » Tightens easily with strap adjustments
- » Provides overhead coverage from sun



2436-333

PROWLER 500

WINDSHIELDS

FULL POLY WINDSHIELD

- » Abrasion-resistant polycarbonate
- » Custom rubber seal integrates with vehicle hood



2436-573

PROWLER 500

REAR WINDOWS

REAR PANEL

- » Polycarbonate construction provides clear rearview
- » Reduces dust swirl when using a windshield



2436-574

PROWLER 500

SOFT REAR PANEL

- » Durable solution-dyed and urethane-coated Series 70 fabric for premium fade resistance, water repellent and mildew resistance
- » Zippered window rolls up for controlled airflow and added cab ventilation
- » Works with Bimini top and hard top
- » Reduces dust swirl when used with a windshield



2436-332

PROWLER 500

BUMPERS

FRONT BUMPER

- » Contoured fit offers frontal protection
- » 4-point mounting system for a secure fit and easy install
- » Powder-coated steel tube construction with rubber center accent offers strength with protection



2436-346

PROWLER 500

REAR BUMPER

- » Heavy-duty, powder-coated tubular steel construction
- » Mounts to rear box frame to protect box and tailgate areas
- » Allows bed to dump



2436-347 PROWLER 500

WINCHES

3,000-LB. WINCH

- » Includes 50-ft. of durable wire cable
- » Powerful permanent magnet motor with 3,000-lbs. of pulling capacity
- » Plow roller fairlead with larger diameter bottom roller for reduced rope stress when plowing
- » Remote-ready wiring harness for optional remote upgrade kits



3436-035

PROWLER 500

WINCH MOUNT

- » Heavy-duty steel mount with durable, powder-coated finish
- » 4 mounting points work with 3,000-lb. and 5,000-lb. winches
- » Steel hook loop for out-of-the-way winch hook storage when not in use
- » 2-bolt mounting for easy installation or removal
- » Fairlead mount designed for 6-in. wide fairleads
- » Required for winch installation on Prowler 500
- » Requires 3436-035 (3,000-lb. Winch)

2436-348

PROWLER 500



STANDARD ROLLER FAIRLEAD



2441-933

PROWLER 500

PLOW ROLLER FAIRLEAD

- » Plow roller fairlead with larger diameter bottom roller for reduced rope stress



2441-934

PROWLER 500

WINCH ACCESSORIES KIT

- » Doubles the power capability of your winch with the handy pulley block
- » Clevis shackles (2) provide secure rigging
- » Includes sturdy 7,000-lb. tow straps (2)
- » Packs conveniently into the rugged Cordura® nylon case



1436-600

UNIVERSAL

ROV SYNTHETIC WINCH ROPE

- » Rope does not burr like steel cable
- » Increased strength over steel cable
- » Better fatigue resistance than steel cable

0541-570 ATV

USE WITH 3,000-LB. WINCH

2441-113 ROV

USE WITH 4,000-LB. & 5,000-LB. WINCHES



PLOWS

STANDARD PLOW NEXT GEN PUSH FRAME & MOUNT

- » Use your winch to assist with installation when the snow starts flying
- » Releasing the push frame from the vehicle is easy with a simple push of your foot
- » Convenient 5-position angle adjustment with the foot pedal design allows you to adjust the angle of your blade without bending over
- » Shear pin protection helps protect the plow system from damage when hitting a solid object
- » Powder-coated steel square-tube design provides optimal strength and durability
- » Rubber shock absorbers offer protection from over-angling and soften the impact during a shear pin break



2436-390

PROWLER 500

66-IN. STEEL PLOW BLADE

- » Optimized moldboard curve creates increased snow-roll performance and allows for more efficient snow movement
- » Compatible with a variety of accessories for added ease of plowing
- » Accessories include ready-to-install snow deflectors, drift cutters, edge markers, curb finders and easy-to-remove wear bars
- » Stamped plow face adds increased rigidity to the face of the plow



2436-297 66-IN. BLADE

PROWLER 500

ONE-WAY PLOW BLADE ATTACHMENT

- » Converts SPEEDPlow blade into a one-way tapered blade
- » Stamped one-piece steel blade attachment rolls snow further than standard SPEEDPlow blade
- » Steel frame with durable, glossy black powder-coated finish
- » Left-side drift cutter keeps snow contained and moves the snow to the right
- » Works with 20-in. tall SPEEDPlow blades



2436-301

PROWLER 500

PLOW BLADE DRIFT CUTTERS - FOR 20-IN. HEIGHT BLADE

- » Precision fit for SPEEDPlow blades to keep snow in the plow and aid in controlling snow and cutting cleaner passes
- » Does not work with curb guards or UHMW wear bars
- » Sold in pairs



2436-302

PROWLER 500

PLOW BLADE CURB FINDERS

- » Heavy-duty, powder-coated 0.25-in. stamped steel plate protects the plow from damage caused by contact with curbs
- » Easy to install on any SPEEDPlow blade
- » Does not work with drift cutters
- » Sold in pairs

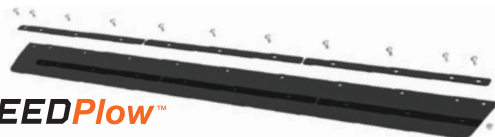


2436-275

PROWLER 500

66-IN. SNOW DEFLECTOR

- » Large rubber barrier increases forward movement of snow and prevents snow from rolling over the top of the blade
- » Steel support braces add strength and support to the rubber barrier
- » May be custom cut to length



2436-309 66-IN. BLADE

PROWLER 500

EDGE MARKERS

- » Increase visibility and know exactly where your blade edges are with these easy-install markers
- » Great when snow is piled high and light levels are low



2436-277

PROWLER 500

INTERIOR

REARVIEW MIRROR

- » 10-in. x 3.5-in. wide-angle, adjustable convex housing provides excellent rear visibility
- » Constructed with durable, high-strength reinforced materials
- » Clamshell mounting clamp fits ROPS tubing from 0.75-in. to 1-in.
- » Includes installation tools and all mounting hardware for easy assembly



2436-378

PROWLER 500

REARVIEW MIRROR

- » Easily mounts to Prowler canopy tube
- » 4-in. x 11-in. size gives a nice, wide rear view



1436-414

PROWLER 500

SIDE MIRROR

- » 5-in. x 6.5-in. adjustable mirror head provides superior visibility
- » Bracket and hardware included



1436-505 RIGHT HAND

PROWLER 500

1436-506 LEFT HAND

PROWLER 500

SIDE MIRROR KIT

- » 7.75-in. x 4.125-in. convex mirrors provide image stabilization and a wide viewing angle
- » High-impact ABS plastic housing and shatterproof glass resist damage
- » Breakaway hinge feature folds mirror back upon impact
- » Ball-and-socket joint gives a broad range of viewing angles
- » Includes left and right mirrors



2436-380

PROWLER 500

PROWLER EV



ROOFS

HARD TOP

- » Made from tough and durable HDPE
- » Protect yourself from the sun, rain and other debris
- » Adds a sleek look to the vehicle



682611

PROWLER EV

WINDSHIELDS

FULL WINDSHIELD

- » Made of hard-coated polycarbonate
- » Provides complete protection and unobstructed vision
- » Easy installation



682913

PROWLER EV

SPLIT WINDSHIELD

- » Made of hard-coated polycarbonate
- » Allows you to flip the windshield up for a full shield or down for half shield
- » Enjoy the option of added protection or increased airflow



682912

PROWLER EV

DOORS

SOFT DOOR KIT

- » Made of UV- and tear-resistant canvas with clear vinyl window for unobstructed sideways visibility
- » Compatible with the hard top



671249

PROWLER EV

BUMPERS

STICK STOPPER KIT

639841

PROWLER EV

WINCHES

WARN 4,000 LB SYNTHETIC WINCH WIRE

751269PKG

PROWLER EV

HUNTING

GUN MOUNT

- » Safely and securely transport most rifles and shotguns
- » Mounts vertically for safety and protection
- » Provides quick and easy access
- » Located close to the driver, on the seat kit

PROWLER EV

751276PKG - DUAL MOUNT

PROWLER EV

CARGO STORAGE

HOOD RACK

668487

PROWLER EV

LIGHTING

HEISE 42-IN. DUAL-ROW CURVED LED LIGHT BAR

- » The 240-watt, 42-in. dual-row LED light bar connects to the light bar mount
- » Offers a curved design and 2 different beam patterns
- » Has 19,200 raw lumen and 6,000K color temperature
- » Has a 10-30V DC input voltage
- » Wiring harness is required. Use 668492 Wiring Harness and 669291 or 668496 Light Bar Mount (Sold separately)



654073

PROWLER EV

HEISE 9.25-IN. SINGLE-ROW LED LIGHT BAR

- » The 18-watt, 9.25-inch Single-Row LED Light Bar connects to the front roof light bar attachment
- » Delivers 1440 raw lumen.
- » Has 90° flood light beam offers a wide angle of illumination
- » Wiring harness is required. Use 668492 Wiring Harness and 669291 or 668496 Light Bar Mount (Sold separately)



654077

PROWLER EV

HEISE 22-IN. DUAL-ROW LED LIGHT BAR

- » The 120-watt, 22-in. Dual-Row LED Light Bar connects to the front roof light bar attachment
- » Delivers 9,600 raw lumen
- » The 90° flood light beam illuminates a vast area, while the 8° spot beam provides an intense light in the center
- » Wiring harness is required. Use 668492 Wiring Harness and 669291 or 668496 Light Bar Mount (Sold separately)



654072

PROWLER EV

LED LIGHT BAR WIRING HARNESS

689940

PROWLER EV

LIGHT BAR MOUNT (WITH CANOPY)

689568

PROWLER EV

LIGHT BAR MOUNT (NO CANOPY)

669291

PROWLER EV

INTERIOR

SIDE-VIEW MIRROR

- » Features damage-resistant housing, durable steel clamps and a breakaway design to deflect hits from stray objects

668490

PROWLER EV

REARVIEW MIRROR

- » Slightly convex to provide a wider angle for better vision
- » Rubber seal ball mount reduces vibration and allows for adjustability



651489

PROWLER EV

SUN VISOR

- » Block the sun in any direction with a 4-way adjustable visor
- » Minimal tools required to mount to ROPS and make small adjustments
- » Sold separately



652491

PROWLER EV

ALTERRA 570/700



WINDSHIELDS

WINGUARD 2 WINDSHIELD

- » Attach and remove in seconds with no tools required
- » Adjustable angle to optimize wind flow
- » Screen-printed graphics add style and accent vehicle body graphics
- » RAM mount ready and fits over 200 RAM accessories



2436-987 BLACK TALL

ALTERRA 570 & 700 MODELS

CYCRA M4 RECOIL HAND GUARDS

- » Maximum coverage for increased hand protection
- » Removable Shield Cover for vented or non-vented riding conditions
- » Patent Pending Recoil Technology allows handguards to swing out
- » 6061 T-6 Aluminum Mount Brackets for added strength
- » Complete racer pack includes: shields, brackets & hardware



10006559

ALTERRA 570 & 700 MODELS

BUMPERS

BUMPER - FRONT

- » Wide, steel box plate construction and durable, rust-inhibiting black wrinkle paint provide style and protection
- » Easy installation
- » Plate construction provides easy mounting of accessory lights



2436-192

ALTERRA 570 & 700 MODELS

BRUSHGUARD BUMPERS

- » Protects grille, rack and lights from brush and debris
- » Contoured to fit the front of your Arctic Cat Off Road ATV
- » Durable protection with rust-inhibiting, powder-coated steel
- » Withstands abuse with a burly, heavy-duty 1.5-in. center-tube section

**Excludes select 2019-2021 models with steel tube cargo racks*



2436-503

ALTERRA 570 & 700 MODELS

2436-247

ALTERRA 570 & 700 TRV MODELS

REAR BUMPERS

- » Custom designed for protection of rear frame, muffler, fenders and taillights
- » Durable, 1.5-in. dual-tube, powder-coated steel construction
- » 4-point mounting to the upper and lower frame for added strength



2436-504

ALTERRA 570 & 700 TRV MODELS

2436-248

LIGHTING

4-LED LIGHT KIT

- » Four 3-watt bulbs for exceptional illumination fully sealed, black powder-coated cast aluminum housing with clear high-impact lens
- » Fast Clamps (1436-619) may be used to mount to bumpers and canopy



1436-412

ALTERRA 570 & 700 MODELS

WINCHES

Our winches are designed to help you make the most of your machine. In fact, we pair our winches and machines to create the perfect match for the performance, durability and reliability you need. All our ATV winches share these common features:

- » Arctic Cat Off Road / WARN designed and engineered
- » All-metal gear-end housing and mechanical brake
- » Remote-ready wiring harness for optional remote upgrade kits
- » Backed by WARN limited lifetime mechanical and 3-year electrical warranty

WARN VRX 35 WINCH KIT

- » 3,500-lbs. of pulling capacity
- » Durable all-metal construction
- » IP68-rated waterproof sealing keeps the elements out
- » 50 ft. of 1/4-in. wire cable
- » Backed by WARN's limited lifetime mechanical warranty and 3 year electrical warranty



3436-114

ALTERRA 570 & 700 MODELS

WARN VRX 35 WINCH MOUNTING KIT

- » Includes winch mount plate, electrical harness/switches and mounting hardware

3436-115

ALTERRA 570 & 700 MODELS

ATV SYNTHETIC WINCH ROPE

- » Rope does not burr like steel cable
- » Increased strength over steel cable
- » Better fatigue resistance than steel cable



0541-570

USE WITH ALUMINUM DRUM WARN 2,500-LB. & 3,000-LB. WINCHES

WIRELESS REMOTE UPGRADE KIT - ALL VEHICLES

- » Easy plug-and-play installation
- » 50-ft. operation radius
- » Automatic system shut-off



2436-110

ALL WARN PROVANTAGE WINCH KITS

STANDARD ROLLER FAIRLEAD



0441-403

ALTERRA 570 & 700 MODELS

PLOW ROLLER FAIRLEAD

- » Plow roller fairlead with larger diameter bottom roller for reduced rope stress



2441-931

ALTERRA 570 & 700 MODELS

HAWSE FAIRLEAD

- » Double-coated Hawse Fairlead reduces rope wear and improves corrosion resistance



2441-932

ALTERRA 570 & 700 MODELS

PLOWS

STANDARD PLOW NEXT GEN PUSH FRAME & MOUNT KIT

- » Winch-assisted installation
- » Easy push frame release with a simple push of the foot
- » Convenient 5-position angle adjustment with the foot pedal design allows you to adjust the angle of your blade without bending over
- » Shear pin protection helps protect the plow system from damage when hitting a solid object
- » Powder-coated steel square-tube design provides optimal strength and durability
- » Rubber shock absorbers offer protection from over-angling and soften the impact during a shear pin break
- » Use with SPEEDPlow plow blades (2436-991, 2436-993, 2436-994 or 2436-995)
- » Frame Mount Kit included
- » NOTE: 66-in. blades not recommended for 500cc or less



2436-534

ALTEIRA 570 & 700 MODELS

TIGERTRAX STANDARD PLOW NEXT GEN EXTENSION

- » Extends push frame to accommodate added height when tracks are installed with drilling required
- » Directly bolts to Push Frame (2436-534)



2436-535

FITS STANDARD PLOW NEXT GEN PUSH FRAME

ATV SPEEDPLOW PLOW BLADES

- » Optimized moldboard curve creates increased snow-roll performance and allows for more efficient snow movement
- » Compatible with a variety of accessories for added ease of plowing
- » Accessories include ready-to-install snow deflectors, drift cutters, edge markers, curb finders and easy-to-remove wear bars
- » Compatible with SPEEDPlow push frames and Standard Plow Next Gen

SPEEDPLOW STEEL PLOW BLADE - 17-IN. HEIGHT

- » Stamped steel plow face adds increased rigidity to the face of the plow



2436-991 53-IN. BLADE

2436-993 66-IN. BLADE

USE WITH ATV SPEEDPLOW PUSH FRAME KITS & STANDARD PLOW NEXT GEN PUSH FRAME

ATV SPEEDPLOW POLYETHYLENE PLOW BLADE - 17-IN. HEIGHT

- » Featuring a premium lightweight polyethylene blade face that offers long-lasting durability and sheds away snow



2436-994 53-IN. BLADE

2436-995 66-IN. BLADE

USE WITH ATV SPEEDPLOW PUSH FRAME KITS & STANDARD PLOW NEXT GEN PUSH FRAME

SPEEDPLOW ONE-WAY BLADE ATTACHMENT

- » Converts SPEEDPlow blade into a one-way tapered blade
- » Stamped one-piece steel blade attachment rolls snow farther than standard SPEEDPlow blade
- » Steel frame with durable, glossy black powder-coated finish
- » Left-side drift cutter keeps snow contained and moves the snow to the right
- » Works with 17-in. tall
- » SPEEDPlow blades



2436-296 66-IN. COUNTY BLADE USE WITH 17-IN. HIGH ATV SPEEDPLOW BLADES

SPEEDPLOW STEEL WEAR BAR

- » Easy-install replacement steel wear bar



2436-316

53-IN. SPEEDPLOW BLADE

CURB FINDERS

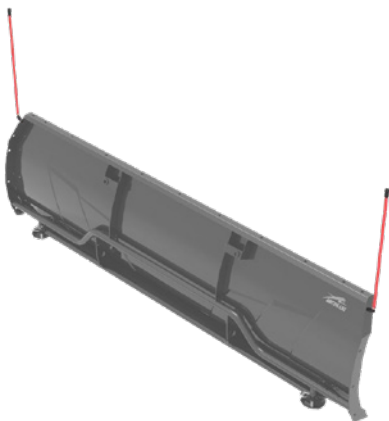
- » Heavy-duty, powder-coated 0.25-in. stamped steel plate protects the plow from damage caused by contact with curbs
- » Curb finders are easy to install on any SPEEDPlow blade
- » Does not work with drift cutters or UHMW wearbar
- » Sold in pairs



2436-275

EDGE MARKERS

- » Increase visibility and know exactly where your blade edges are with these easy-install markers
- » Great when snow is piled high and light levels are low



2436-277

DRIFT CUTTERS

- » Move and control more snow while making cleaner passes with drift cutters installed on your SPEEDPlow blade
- » Sold in pairs



2436-302

66-IN. | 72 -IN. BLADES

STORAGE

CENTER BAG – FRONT

- » Semi-rigid bag integrated with side-stiffening components for anti-sag construction
- » Sleek compression-molded lid adds style to your machine
- » Mudguard zippers keep the contents clean and free of outside elements
- » 6.5-in. height accommodates a variety of on-the-go items



2436-177 FRONT

ALTERRA 570 & 700 MODELS

CENTER BAG – REAR

- » Semi-rigid bag integrated with side-stiffening components for anti-sag construction
- » Sleek compression-molded lid adds style to your machine
- » Mudguard zippers keep the contents clean and free of outside elements
- » 11-in. height is large enough for medium-to-large items, like helmets and other gear



2436-185 REAR

ALTERRA 570 & 700 MODELS

SIDE BAGS

- » Semi-rigid bag integrated with side-stiffening components for anti-sag construction
- » Sleek compression-molded lid adds style to your machine
- » Mudguard zippers keep the contents clean and free of outside elements
- » Works with center bags (2436-177 and 2436-185) or as a stand-alone



2436-184

ALTERRA 570 & 700 MODELS

XR RACK BAG

- » Durable, ballistic nylon with reinforced bottom
- » Water-resistant zippers
- » Features 3 large openings with 2 removable dividers
- » Easy hook-and-loop fastener attachment



2436-176

ALTERRA 570 & 700 MODELS

FENDER BAG

- » Compression-molded body with hinged magnetic lid
- » Magnetic lid closure provides secure storage without straps
- » Snap-in insert for added organization of small items
- » Rack-attachment hook installs and detaches in seconds

** Excludes select 2019-2021 Models with steel tube cargo racks*



2436-515

ALTERRA 570 & 700 MODELS

RACK EXTENSION

- » Maximize rack capacity with a 3-in. or 6-in. steel rack extension
- » Featuring rubber bumpers to help protect cargo
- » Includes manual attachment system
- » Upgradeable to the accessory SpeedLock attachment system



2436-119 3-IN.



2436-120 6-IN.

ALTERRA 570 & 700 MODELS

SPEEDLOCK PLOW LIGHT

- » Provides ample light in all work environments
- » Quickly attaches and detaches using convenient SpeedLock system
- » SpeedLock attachment accessories included



2436-568

ALTERRA 570 & 700 MODELS

SPEEDLOCK

- » Drop-in system quickly attaches with easy-to-use thumb locks
- » Durable cast-aluminum components with one-click unlocking for fast removal



SPEEDRACK

2436-501

ALTERRA 570 & 700 MODELS

SPEEDLOCK COVER

- » Constructed of supple Duro 60 silica rubber
- » Retains mechanical mobility of SpeedLock in severe cold weather conditions



2436-540

SPEEDLOCK (2436-501, 2436-122)

SPEEDRACK XR BACKREST

- » Offers excellent, fully padded lumbar support
- » Adjustable mounting positions for custom comfort
- » SpeedLock attachment accessories included



2436-143

ALTERRA 570 & 700 MODELS

MIRRORS

WINDSHIELD MIRROR KIT

- » Compact, yet offers excellent rear view



1436-713

FITS WINDGUARD WINDSHIELDS (EXCLUDES WINDGUARD 2)

DUAL MIRROR KIT

- » Lightweight, easy to install
- » Provides excellent dual rearview vision
- » Black powder coating for a long-lasting finish
- » Rustproof



1436-510

ALTERRA 570 & 700 MODELS

HANDLEBAR END MIRROR

- » Quick bar-end mounting on most ATVs
- » Does not interfere with hand movement
- » Vibration-free convex safety lens for ultra-clear rearview vision
- » Sold individually



1436-507

ALTERRA 570 & 700 MODELS

MIRROR

- » Compact, yet offers excellent rear view
- » Requires Mirror-Mounting Bracket (1436-700)
- » NOTE: Will only work on 1 side for the VLX 700



1436-702

ALTERRA 570 & 700 MODELS

MIRROR-MOUNTING BRACKET

- » Use for mounting Mirror (1436-702)



1436-700

ALTERRA 570 & 700 MODELS

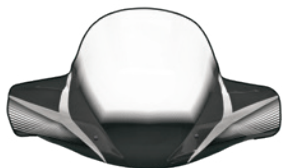
TBX



WINDSHIELDS

WINDGUARD WINDSHIELDS

- » Protects face, torso and hands from wind, weather and debris on the trail
- » Attach and remove in seconds with no tools required
- » Built-in beverage holder
- » Dust-management system
- » Features Quick-Attach System



1436-590 BLACK

TBX MODELS

CYCRA M4 RECOIL HAND GUARDS

- » Maximum coverage for increased hand protection
- » Removable Shield Cover for vented or non-vented riding conditions
- » Patent Pending Recoil Technology allows handguards to swing out
- » 6061 T-6 Aluminum Mount Brackets for added strength
- » Complete racer pack includes: shields, brackets & hardware



10006559

'15+ UNIVERSAL FULL-SIZE

BUMPERS

BRUSHGUARD BUMPERS

- » Protects grille, rack and lights from brush and debris
- » Contoured to fit the front of your Arctic Cat Off Road ATV
- » Durable protection with rust-inhibiting, powder-coated steel
- » Withstands abuse with a burly, heavy-duty 1.5-in. center-tube section
- » Ideal for use with Arctic Cat Off Road winch kits
- » See dealer for additional accessory applications



1436-031

TBX MODELS

LIGHTING

4-LED LIGHT KIT

- » Removable in 10 seconds, no tools necessary flashlight, surface for mounting GPS or cellphone, dual mirrors
- » Dashboard includes built-in beverage holder, flashlight holder with
- » Durable, injection-molded HDPE
- » 2-piece windshield can be removed and dashboard can still be used
- » Accommodates 4-LED Light Kit (1436-412) or Firebar 3 (1436-856)



1436-412

UNIVERSAL FITMENT ON ALL ATV MODELS

WINCHES

Our winches are designed to help you make the most of your machine. In fact, we pair our winches and machines to create the perfect match for the performance, durability and reliability you need. All our ATV winches share these common features:

- » Arctic Cat Off Road / WARN designed and engineered
- » All-metal gear-end housing and mechanical brake
- » Remote-ready wiring harness for optional remote upgrade kits
- » Backed by WARN limited lifetime mechanical and 3-year electrical warranty

ATV SYNTHETIC WINCH ROPE

- » Rope does not burr like steel cable
- » Increased strength over steel cable
- » Better fatigue resistance than steel cable



0541-570 USE WITH ALUMINUM DRUM WARN 2,500-LB. & 3,000-LB. WINCHES

WIRELESS REMOTE UPGRADE KIT – ALL VEHICLES

- » Easy plug-and-play installation
- » 50-ft. operation radius
- » Automatic system shut-off



2436-110 ALL WARN PROVANTAGE WINCH KITS

STANDARD ROLLER FAIRLEAD



0441-403 TBX MODELS

PLOW ROLLER FAIRLEAD

- » Plow roller fairlead with larger diameter bottom roller for reduced rope stress



2441-931 TBX MODELS

HAWSE FAIRLEAD

- » Double-coated Hawse Fairlead reduces rope wear and improves corrosion resistance



2441-932 TBX MODELS

PLOWS

STANDARD PLOW NEXT GEN PUSH FRAME & MOUNT KIT

- » Winch-assisted installation
- » Easy push frame release with a simple push of the foot
- » Convenient 5-position angle adjustment with the foot pedal design allows you to adjust the angle of your blade without bending over
- » Shear pin protection helps protect the plow system from damage when hitting a solid object
- » Powder-coated steel square-tube design provides optimal strength and durability
- » Rubber shock absorbers offer protection from over-angling and soften the impact during a shear pin break
- » Use with SPEEDPlow plow blades (2436-991, 2436-993, 2436-994 or 2436-995)
- » Frame Mount Kit included
- » **NOTE:** 66-in. blades not recommended for 500cc or less



2436-534 TBX MODELS

ATV SPEEDPLOW PLOW BLADES

- » Optimized moldboard curve creates increased snow-roll performance and allows for more efficient snow movement
- » Compatible with a variety of accessories for added ease of plowing
- » Accessories include ready-to-install snow deflectors, drift cutters, edge markers, curb finders and easy-to-remove wear bars
- » Compatible with SPEEDPlow push frames and Standard Plow Next Gen

ATV SPEEDPLOW STEEL PLOW BLADE – 17-IN. HEIGHT

- » Stamped steel plow face adds increased rigidity to the face of the plow



2436-991 53-IN. BLADE

2436-993 66-IN. BLADE

USE WITH ATV SPEEDPLOW PUSH FRAME KITS & STANDARD PLOW NEXT GEN PUSH FRAME

ATV SPEEDPLOW POLYETHYLENE PLOW BLADE – 17-IN. HEIGHT

- » Featuring a premium lightweight polyethylene blade face that offers long-lasting durability and sheds away snow

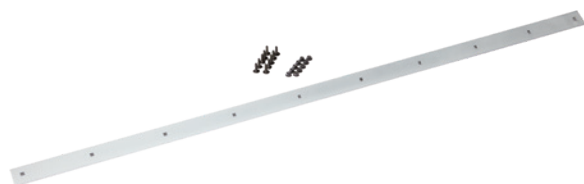


2436-994 53-IN. BLADE

2436-995 66-IN. BLADE USE WITH ATV SPEEDPLOW PUSH FRAME KITS & STANDARD PLOW NEXT GEN PUSH FRAME

SPEEDPLOW STEEL WEAR BAR

- » Easy-install replacement steel wear bar



2436-316

53-IN. SPEEDPLOW BLADE

CURB FINDERS

- » Heavy-duty, powder-coated 0.25-in. stamped steel plate protects the plow from damage caused by contact with curbs
- » Curb finders are easy to install on any SPEEDPlow blade
- » Does not work with drift cutters or UHMW wearbar
- » Sold in pairs.



2436-275

EDGE MARKERS

- » Increase visibility and know exactly where your blade edges are with these easy-install markers
- » Great when snow is piled high and light levels are low



2436-277

DRIFT CUTTERS

- » Move and control more snow while making cleaner passes with drift cutters installed on your SPEEDPlow blade
- » Sold in pairs.



2436-302

66-IN. | 72-IN. BLADES

MIRRORS

MIRROR

- » Compact, yet offers excellent rear view
- » Requires Mirror-Mounting Bracket (1436-700)
- » **NOTE:** Will only work on 1 side for the VLX 700



1436-702 '23 ALTERRA 600; '04-'22 350-1000, XR, ALTERRA & MUDPRO MODELS; ALL TRV & TBX MODELS

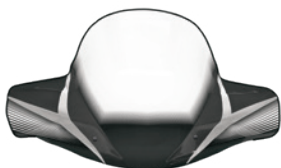
VLX



WINDSHIELDS

WINGUARD WINDSHIELDS

- » Protects face, torso and hands from wind, weather and debris on the trail
- » Attach and remove in seconds with no tools required
- » Built-in beverage holder
- » Dust-management system
- » Features Quick-Attach System



1436-590 BLACK

VLX MODELS

CYCRA M4 RECOIL HAND GUARDS

- » Maximum coverage for increased hand protection
- » Removable Shield Cover for vented or non-vented riding conditions
- » Patent Pending Recoil Technology allows handguards to swing out
- » 6061 T-6 Aluminum Mount Brackets for added strength
- » Complete Racer Pack includes: Shields, Brackets & Hardware



10006559

VLX MODELS

BUMPERS

BUMPER – FRONT

- » Wide, steel box plate construction and durable, rust-inhibiting black wrinkle paint provide style and protection
- » Easy installation
- » Plate construction provides easy mounting of accessory lights



2436-192

ALTERRA, XR, 500/570/700

BRUSHGUARD BUMPERS

- » Protects grille, rack and lights from brush and debris
- » Contoured to fit the front of your Arctic Cat Off Road ATV
- » Durable protection with rust-inhibiting, powder-coated steel
- » Withstands abuse with a burly, heavy-duty 1.5-in. center-tube section
- » Ideal for use with Arctic Cat Off Road winch kits
- » See dealer for additional accessory applications



1436-031

VLX MODELS

LIGHTING

4-LED LIGHT KIT

- » Removable in 10 seconds, no tools necessary flashlight, surface for mounting GPS or cellphone, dual mirrors
- » Dashboard includes built-in beverage holder, flashlight holder with
- » Durable, injection-molded HDPE
- » 2-piece windshield can be removed and dashboard can still be used
- » Accommodates 4-LED Light Kit (1436-412) or Firebar 3 (1436-856)



1436-412

VLX MODELS

WINCHES

Our winches are designed to help you make the most of your machine. In fact, we pair our winches and machines to create the perfect match for the performance, durability and reliability you need. All our ATV winches share these common features:

- » Arctic Cat Off Road / WARN designed and engineered
- » All-metal gear-end housing and mechanical brake
- » Remote-ready wiring harness for optional remote upgrade kits
- » Backed by WARN limited lifetime mechanical and 3-year electrical warranty

WARN VRX 35 WINCH KIT

- » 3,500 lbs. of pulling capacity
- » Durable all-metal construction
- » IP68-rated waterproof sealing keeps the elements out
- » 50 ft. of 1/4-in. wire cable
- » Backed by WARN's limited lifetime mechanical warranty and 3 year electrical warranty



3436-114

VLX MODELS

ATV SYNTHETIC WINCH ROPE

- » Rope does not burr like steel cable
- » Increased strength over steel cable
- » Better fatigue resistance than steel cable



0541-570

USE WITH ALUMINUM DRUM WARN 2,500-LB. & 3,000-LB. WINCHES

WIRELESS REMOTE UPGRADE KIT – ALL VEHICLES

- » Easy plug-and-play installation
- » 50 ft operation radius
- » Automatic system shut-off



2436-110

ALL WARN PROVANTAGE WINCH KITS

STANDARD ROLLER FAIRLEAD



0441-403

VLX MODELS

PLOW ROLLER FAIRLEAD

- » Plow roller fairlead with larger diameter bottom roller for reduced rope stress



2441-931

VLX MODELS

HAWSE FAIRLEAD

- » Double-coated Hawse Fairlead reduces rope wear and improves corrosion resistance



2441-932

VLX MODELS

PLOWS

STANDARD PLOW NEXT GEN PUSH FRAME & MOUNT KIT

- » Winch-assisted installation
- » Easy push frame release with a simple push of the foot
- » Convenient 5-position angle adjustment with the foot pedal design allows you to adjust the angle of your blade without bending over
- » Shear pin protection helps protect the plow system from damage when hitting a solid object
- » Powder-coated steel square-tube design provides optimal strength and durability
- » Rubber shock absorbers offer protection from over-angling and soften the impact during a shear pin break
- » Use with SPEEDPlow plow blades (2436-991, 2436-993, 2436-994 or 2436-995)
- » Frame Mount Kit included
- » NOTE: 66-in. blades not recommended for 500cc or less



2436-534

VLX MODELS

SPEEDPLOW ONE-WAY BLADE ATTACHMENT

- » Converts SPEEDPlow blade into a one-way tapered blade
- » Stamped one-piece steel blade attachment rolls snow farther than standard SPEEDPlow blade
- » Steel frame with durable, glossy black powder-coated finish
- » Left-side drift cutter keeps snow contained and moves the snow to the right
- » Works with 17-in. tall
- » SPEEDPlow blades



2436-296 66-IN. COUNTY BLADE USE WITH 17-IN. HIGH ATV SPEEDPLOW BLADES

SPEEDPLOW SNOW DEFLECTORS

- » Large rubber barrier increases forward movement of snow and prevents snow from rolling over the top of the blade
- » Steel support braces add strength and support to the rubber barrier
- » May be custom cut to length

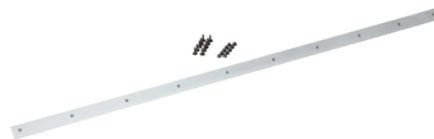


2436-308 53-IN. BLADE

USE WITH SPEEDPLOW BLADES

SPEEDPLOW STEEL WEAR BAR

- » Easy-install replacement steel wear bar



2436-316 53-IN. SPEEDPLOW BLADE

STORAGE

DUAL MIRROR KIT

- » Lightweight, easy to install
- » Provides excellent dual rearview vision
- » Black powder coating for a long-lasting finish
- » Rustproof



1436-510

VLX MODELS

MIRROR

- » Compact, yet offers excellent rear view
- » Requires Mirror-Mounting Bracket (1436-700)
- » NOTE: Will only work on 1 side for the VLX 700



1436-702

VLX MODELS

MIRROR-MOUNTING BRACKET

- » Use for mounting Mirror (1436-702)



1436-700

VLX MODELS

XR



WINDSHIELDS

CYCRA M4 RECOIL HAND GUARDS

- » Maximum coverage for increased hand protection
- » Removable Shield Cover for vented or non-vented riding conditions
- » Patent Pending Recoil Technology allows handguards to swing out
- » 6061 T-6 Aluminum Mount Brackets for added strength
- » Complete Racer Pack includes: Shields, Brackets & Hardware



10006559

XR MODELS

BUMPERS

BUMPER – FRONT

- » Wide, steel box plate construction and durable, rust-inhibiting black wrinkle paint provide style and protection
- » Easy installation
- » Plate construction provides easy mounting of accessory lights



2436-192

XR MODELS

REAR BUMPERS

- » Custom designed for protection of rear frame, muffler, fenders and taillights
- » Durable, 1.5-in. dual-tube, powder-coated steel construction
- » 4-point mounting to the upper and lower frame for added strength



2436-504

XR MODELS

LIGHTING

4-LED LIGHT KIT

- » Removable in 10 seconds, no tools necessary flashlight, surface for mounting GPS or cellphone, dual mirrors
- » Dashboard includes built-in beverage holder, flashlight holder with durable, injection-molded HDPE
- » 2-piece windshield can be removed and dashboard can still be used
- » Accommodates 4-LED Light Kit (1436-412) or Firebar 3 (1436-856)



1436-412

XR MODELS

WINCHES

Our winches are designed to help you make the most of your machine. In fact, we pair our winches and machines to create the perfect match for the performance, durability and reliability you need. All our ATV winches share these common features:

- » Arctic Cat Off Road / WARN designed and engineered
- » All-metal gear-end housing and mechanical brake
- » Remote-ready wiring harness for optional remote upgrade kits
- » Backed by WARN limited lifetime mechanical and 3-year electrical warranty

WARN VRX 35 WINCH KIT

- » 3,500 lbs. of pulling capacity
- » Durable all-metal construction
- » IP68-rated waterproof sealing keeps the elements out
- » 50 ft. of 1/4 in. wire cable
- » Backed by WARN's limited lifetime mechanical warranty and 3 year electrical warranty



3436-114

XR MODELS

ATV SYNTHETIC WINCH ROPE

- » Rope does not burr like steel cable
- » Increased strength over steel cable
- » Better fatigue resistance than steel cable



0541-570

USE WITH ALUMINUM DRUM WARN 2,500-LB. & 3,000-LB. WINCHES

WIRELESS REMOTE UPGRADE KIT – ALL VEHICLES

- » Easy plug-and-play installation
- » 50-ft. operation radius
- » Automatic system shut-off



2436-110

ALL WARN PROVANTAGE WINCH KITS

CORDED REMOTE UPGRADE KIT – ALL VEHICLES

- » Easy plug-and-play installation
- » Includes remote control with 10 ft. of cord, storage bag, socket and wiring



2436-114

ALL WARN PROVANTAGE WINCH KITS

STANDARD ROLLER FAIRLEAD



0441-403

XR MODELS

PLOW ROLLER FAIRLEAD

- » Plow roller fairlead with larger diameter bottom roller for reduced rope stress



2441-931

XR MODELS

HAWSE FAIRLEAD

- » Double-coated Hawse Fairlead reduces rope wear and improves corrosion resistance



2441-932

XR MODELS

PLOWS

STANDARD PLOW NEXT GEN PUSH FRAME & MOUNT KIT

- » Winch-assisted installation
- » Easy push frame release with a simple push of the foot
- » Convenient 5-position angle adjustment with the foot pedal design allows you to adjust the angle of your blade without bending over
- » Shear pin protection helps protect the plow system from damage when hitting a solid object
- » Powder-coated steel square-tube design provides optimal strength and durability
- » Rubber shock absorbers offer protection from over-angling and soften the impact during a shear pin break
- » Use with SPEEDPlow plow blades (2436-991, 2436-993, 2436-994 or 2436-995)
- » Frame Mount Kit included
- » NOTE: 66-in. blades not recommended for 500cc or less



2436-534

XR MODELS

ATV SPEEDPLOW PLOW BLADES

- » Optimized moldboard curve creates increased snow-roll performance and allows for more efficient snow movement
- » Compatible with a variety of accessories for added ease of plowing
- » Accessories include ready-to-install snow deflectors, drift cutters, edge markers, curb finders and easy-to-remove wear bars
- » Compatible with SPEEDPlow push frames and Standard Plow Next Gen

ATV SPEEDPLOW STEEL PLOW BLADE – 17-IN. HEIGHT

- » Stamped steel plow face adds increased rigidity to the face of the plow



2436-991 53-IN. BLADE

2436-993 66-IN. BLADE

USE WITH ATV SPEEDPLOW PUSH FRAME KITS & STANDARD PLOW NEXT GEN PUSH FRAME

ATV SPEEDPLOW POLYETHYLENE PLOW BLADE – 17-IN. HEIGHT

- » Featuring a premium lightweight polyethylene blade face that offers long-lasting durability and sheds away snow



2436-994 53-IN. BLADE

2436-995 66-IN. BLADE

USE WITH ATV SPEEDPLOW PUSH FRAME KITS & STANDARD PLOW NEXT GEN PUSH FRAME

SPEEDPLOW ONE-WAY BLADE ATTACHMENT

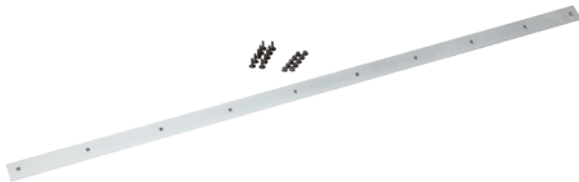
- » Converts SPEEDPlow blade into a one-way tapered blade
- » Stamped one-piece steel blade attachment rolls snow farther than standard SPEEDPlow blade
- » Steel frame with durable, glossy black powder-coated finish
- » Left-side drift cutter keeps snow contained and moves the snow to the right
- » Works with 17-in. tall SPEEDPlow blades



2436-296 66-IN. COUNTY BLADE USE WITH 17-IN. HIGH ATV SPEEDPLOW BLADES

SPEEDPLOW STEEL WEAR BAR

- » Easy-install replacement steel wear bar



2436-316 53-IN. SPEEDPLOW BLADE

STORAGE

CENTER BAG – FRONT

- » Semi-rigid bag integrated with side-stiffening components for anti-sag construction
- » Sleek compression-molded lid adds style to your machine
- » Mudguard zippers keep the contents clean and free of outside elements
- » 6.5-in. height accommodates a variety of on-the-go items



2436-177 FRONT

XR MODELS

CENTER BAG – REAR

- » Semi-rigid bag integrated with side-stiffening components for anti-sag construction
- » Sleek compression-molded lid adds style to your machine
- » Mudguard zippers keep the contents clean and free of outside elements
- » 11-in. height is large enough for medium-to-large items, like helmets and other gear



2436-185 REAR

XR MODELS

SIDE BAGS

- » Semi-rigid bag integrated with side-stiffening components for anti-sag construction
- » Sleek compression-molded lid adds style to your machine
- » Mudguard zippers keep the contents clean and free of outside elements
- » Works with center bags (2436-177 and 2436-185) or as a stand-alone



2436-184

XR MODELS

XR RACK BAG

- » Durable, ballistic nylon with reinforced bottom
- » Water-resistant zippers
- » Features 3 large openings with 2 removable dividers
- » Easy hook-and-loop fastener attachment



2436-176

XR MODELS

FENDER BAG

- » Compression-molded body with hinged magnetic lid
- » Magnetic lid closure provides secure storage without straps
- » Snap-in insert for added organization of small items
- » Rack-attachment hook installs and detaches in seconds



2436-515

XR MODELS

RACK EXTENSION

- » Maximize rack capacity with a 3-in. or 6-in. steel rack extension
- » Featuring rubber bumpers to help protect cargo
- » Includes manual attachment system
- » Upgradeable to the accessory SpeedLock™ attachment system



2436-119 3 IN.



2436-120 6 IN.

XR MODELS

RACK RAIL

- » Fits front or rear rack for additional attachment point
- » Rail helps hold oddly shaped items
- » Cast aluminum for added strength



2436-118

XR MODELS

SPEEDLOCK PLOW LIGHT

- » Provides ample light in all work environments
- » Quickly attaches and detaches using convenient SpeedLock system
- » SpeedLock attachment accessories included



2436-568

XR MODELS

SPEEDLOCK

- » Drop-in system quickly attaches with easy-to-use thumb locks
- » Durable cast-aluminum components with one-click unlocking for fast removal



SPEEDRACK

2436-501

XR MODELS

SPEEDLOCK COVER

- » Constructed of supple Duro 60 silica rubber
- » Retains mechanical mobility of SpeedLock in severe cold weather conditions



SPEEDRACK

2436-540

SPEEDLOCK (2436-501, 2436-122)

SPEEDRACK XR BACKREST

- » Offers excellent, fully padded lumbar support
- » Adjustable mounting positions for custom comfort
- » SpeedLock attachment accessories included



2436-143

XR MODELS

MIRROR

- » Compact, yet offers excellent rear view
 - » Requires Mirror-Mounting Bracket (1436-700)N
- *Will only work on 1 side for the VLX 700*



1436-702

XR MODELS

MIRROR-MOUNTING BRACKET

- » Use for mounting Mirror (1436-702)



1436-700

XR MODELS

MIRRORS

DUAL MIRROR KIT

- » Lightweight, easy to install
- » Provides excellent dual rearview vision
- » Black powder coating for a long-lasting finish
- » Rustproof



1436-510

XR MODELS

HANDLEBAR END MIRROR

- » Quick bar-end mounting on most ATVs
- » Does not interfere with hand movement
- » Vibration-free convex safety lens for ultra-clear rearview vision
- » Sold individually



1436-507

XR MODELS

STAMPEDE/HAVOC



CABS

ADVENTURE KIT HARD CAB (FULL WINDSHIELD)

751169PKG STAMPEDE & HAVOC MODELS;
'18-'20 HAVOC & HAVOC X MODELS

HARD CAB (SPLIT WINDSHIELD)

751170PKG STAMPEDE & HAVOC MODELS;
'18-'20 HAVOC & HAVOC X MODELS

HARD CAB (GLASS WINDSHIELD)

751171PKG STAMPEDE & HAVOC MODELS;
'18-'20 HAVOC & HAVOC X MODELS

SOFT CAB (FULL WINDSHIELD)



751319PKG STAMPEDE & HAVOC MODELS;
'18-'20 HAVOC & HAVOC X MODELS

751320PKG '17-'20 STAMPEDE 4 & STAMPEDE 4X MODELS

SOFT CAB (GLASS WINDSHIELD)

751324PKG STAMPEDE & HAVOC MODELS;
'18-'20 HAVOC & HAVOC X MODELS

751325PKG '17-'20 STAMPEDE 4 & STAMPEDE 4X MODELS

SOFT CAB (SPLIT WINDSHIELD)

751322PKG 2 PASSENGER STAMPEDE & HAVOC MODELS;
'18-'20 HAVOC & HAVOC X MODELS

751323PKG 4 PASSENGER '17-'20 STAMPEDE 4 & STAMPEDE 4X MODELS

FULL POLY DOORS

- » Features automotive-style handles and sliding windows for increased ventilation
- » Includes the components to close out the extended cab for additional dry storage



663990 STAMPEDE & HAVOC MODELS;
'18-'20 HAVOC & HAVOC X MODELS

SOFT DOORS

- » Tear and UV-Resistant canvas doors
- » Vinyl zipper windows easily roll down for extra ventilation
- » Keeps dirt and debris out of the cab



671245- FRONT STAMPEDE & HAVOC MODELS
671246- REAR '17-'20 STAMPEDE 4 & STAMPEDE 4X MODELS

EXTENDED CAB SOFT DOORS

671247 STAMPEDE & HAVOC MODELS

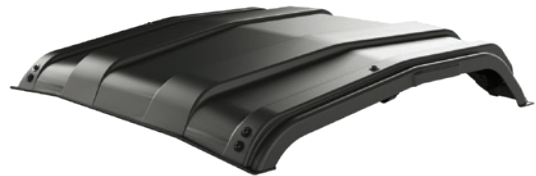
ROOFS

HARD TOP

750832PKG STAMPEDE & HAVOC MODELS;
'18-'20 HAVOC & HAVOC X MODELS

HARD TOP

- » Made from tough and durable HDPE
- » Provides coverage from the sun, rain and other debris
- » Adds a sleek look to the vehicle



649110 '17-'20 STAMPEDE 4 & STAMPEDE 4X MODELS

ALUMINUM ROOF

667970

WINDSHIELDS

SPLIT WINDSHIELD

654886 '17-'20 STAMPEDE, STAMPEDE X, STAMPEDE 4, STAMPEDE 4X MODELS;
'18-'20 HAVOC AND HAVOC X MODELS

FULL WINDSHIELD



654883

STAMPEDE & HAVOC MODELS

GLASS WINDSHIELD

654884

STAMPEDE & HAVOC MODELS

HALF WINDSHIELD

654885

STAMPEDE & HAVOC MODELS

WIPER KIT

- » Keeps dirt, dust and water off the windshield
- » Can only be used with the glass windshield
- » Electric windshield wiper comes with all necessary hardware and harness



750841PKG

STAMPEDE & HAVOC MODELS

REAR WINDOW FOR HARD TOP

- » Made from polycarbonate material
- » Seamless integration with ROPS and hard top
- » Reduce the amount of wind, dust and water inside the cab while maintaining clear rearward visibility



2436-923

STAMPEDE & HAVOC MODELS;

SOFT REAR WINDOW

- » Made from UV- and tear-resistant canvas with clear vinyl center for unobstructed rearward visibility
- » Compatible with the hard top



671248

STAMPEDE & HAVOC MODELS

BUMPERS

TUBULAR BRUSHGUARD

668177 BLACK

STAMPEDE & HAVOC MODELS

668178 MEDIUM GREEN

STAMPEDE & HAVOC MODELS

PLATE BRUSHGUARD



668176 BLACK

STAMPEDE & HAVOC MODELS

PLATE REAR BUMPER

668213 BLACK

STAMPEDE & HAVOC MODELS

668223 MEDIUM GREEN

STAMPEDE & HAVOC MODELS

MODULAR SKID PLATE

658814

STAMPEDE & HAVOC MODELS

FENDER FLARES



750814PKG REAR

STAMPEDE & HAVOC MODELS

WINCHES

WINCH ACCESSORY KIT

637639

STAMPEDE & HAVOC MODELS

EXTENDED BATTERY CABLE FOR CREW

658867

STAMPEDE & HAVOC MODELS

2-IN. EXTENDED HITCH

666188

STAMPEDE & HAVOC MODELS

BOLT-IN FRONT RECEIVER



750838PKG

STAMPEDE & HAVOC MODELS

PLOWS

PLOW BLADE CURB FINDERS

2436-275

UNIVERSAL – FITS WITH ALL SPEEDPLOW BLADES

EDGE MARKERS

2436-277

UNIVERSAL – FITS WITH ALL SPEEDPLOW BLADES

ONE-WAY PLOW BLADE ATTACHMENT

2436-301

UNIVERSAL – WORKS WITH ALL ROV SPEEDPLOW BLADES

PLOW BLADE DRIFT CUTTERS

2436-302

USE WITH 20-IN. HIGH ROV SPEEDPLOW BLADES

72-IN SNOW DEFLECTOR

2436-310 72-IN. BLADE

USE WITH 72-IN. SPEEDPLOW BLADES

HUNTING

GUN MOUNT



668931 DRIVER-SIDE

668932 PASSENGER SIDE

HAVOC MODELS

GUN MOUNT WITH L-TRACK

750796PKG

STAMPEDE & HAVOC MODELS;

'17-'20 STAMPEDE 4 & STAMPEDE 4X MODELS

BOW HOLDER WITH L-TRACK

750795PKG

STAMPEDE & HAVOC MODELS;

'17-'20 STAMPEDE 4 & STAMPEDE 4X MODELS

CARGO STORAGE

HOOD RACK



667090 BLACK

667967 MEDIUM GREEN

STAMPEDE & HAVOC MODELS

'17-'20 STAMPEDE 4 & STAMPEDE 4X MODELS; '18-'20 HAVOC & HAVOC X MODELS

L-TRACK SEAT BACK

750809PKG

'17-'20 STAMPEDE & STAMPEDE X; '17-'20 STAMPEDE 4 & STAMPEDE 4X MODELS

L-TRACK EXTENDED CAB

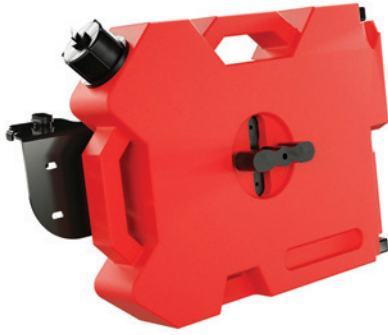
750810PKG

STAMPEDE & HAVOC MODELS

BED EXTENDER

750811PKG

STAMPEDE & HAVOC MODELS FUEL STORAGE



750789PKG

STAMPEDE & HAVOC MODELS

FUEL STORAGE CONTAINER

649254

STAMPEDE & HAVOC MODELS

FUEL STORAGE LATCH

» Used to connect Fuel Storage Container to Fast-N-Latch bracket

652471

STAMPEDE & HAVOC MODELS

FUEL STORAGE LATCH EXTENSION

653615

STAMPEDE & HAVOC MODELS

HEADACHE NET

658886

STAMPEDE & HAVOC MODELS

REMOVABLE DRY BOX

750819PKG

STAMPEDE & HAVOC MODELS

SPARE TIRE MOUNT



664290

STAMPEDE & HAVOC MODELS

INTERIOR DOOR STORAGE POCKETS

664297

STAMPEDE & HAVOC MODELS

MODULAR SOFT STORAGE BAG

653666G01 LEFT

653666G02 RIGHT

STAMPEDE & HAVOC MODELS

EXTENDED CAB SOFT STORAGE BAG



664272

STAMPEDE & HAVOC MODELS

MID-VEHICLE NET

- » Durable mesh design secures items in the extended cab
- » Prohibits items from sliding toward the front
- » For vehicles with bucket seats

671036

STAMPEDE & HAVOC MODELS

FAST-N-LATCH® TOOL

654729

STAMPEDE & HAVOC MODELS

LIGHTING

INTERIOR CAB LIGHT

750823PKG

STAMPEDE & HAVOC MODELS

HEISE 42-IN. DUAL-ROW CURVED LED LIGHT BAR

- » The 240-watt, 42-in. dual-row LED light bar connects to the light bar mount
- » Offers a curved design and 2 different beam patterns
- » Has 19,200 raw lumen and 6,000K color temperature
- » Has a 10-30V DC input voltage
- » Must be used with the wiring harness



654073

STAMPEDE & HAVOC MODELS

HEISE 22-IN. DUAL-ROW LED LIGHT BAR

- » The 120-watt, 22-inch Dual-Row LED Light Bar connects to the front roof light bar attachment
- » Delivers 9,600 raw lumen
- » The 90° flood light beam illuminates a vast area, while the 8° spot beam provides an intense light in the center
- » Wiring harness is necessary



654072

STAMPEDE & HAVOC MODELS

HEISE 9.25-IN. SINGLE-ROW LED LIGHT BAR

- » The 18-watt, 9.25-in. Single-Row LED Light Bar, connects to the front roof light bar attachment,
- » Delivers 1620 raw lumen.
- » Has 90° flood light beam offers a wide angle of illumination
- » Wiring harness is required



654077

STAMPEDE & HAVOC MODELS

6-IN. SINGLE-ROW FLUSH MOUNTED LED LIGHT BAR SET

750824PKG

STAMPEDE & HAVOC MODELS

PLATE FLUSH MOUNTED LIGHT KIT

668259

STAMPEDE & HAVOC MODELS

LIGHT BAR MOUNT

750816PKG

STAMPEDE & HAVOC MODELS

LED LIGHT BAR WIRING HARNESS

654080 STAMPEDE & HAVOC MODELS EXTENDED LED LIGHT BAR WIRING HARNESS

658851

STAMPEDE & HAVOC MODELS

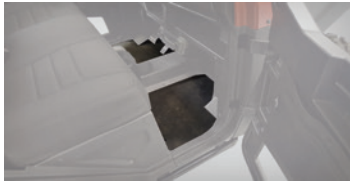
HEAVY-DUTY 75 AMP ALTERNATOR

667202

STAMPEDE & HAVOC MODELS

INTERIOR

HEAVY-DUTY FLOOR MAT – FRONT



651440

STAMPEDE & HAVOC MODELS

UNIVERSAL SIDE MIRROR

652450

STAMPEDE & HAVOC MODELS

CAB HEATER

663124

STAMPEDE & HAVOC MODELS

REARVIEW MIRROR

- » Slightly convex to provide a wider angle for better vision
- » Rubber seal ball mount reduces vibration and allows for adjustability
- » Quick and easy ROPS mounting requires no drilling



651489

STAMPEDE & HAVOC MODELS

GRAB HANDLES

652485

STAMPEDE & HAVOC MODELS

SUN VISOR

652491

STAMPEDE & HAVOC MODELS

WHEELS & TIRES

MAXXIS BIGHORN 2.0 TIRE & ALUMINUM WHEEL SET



750822PKG

STAMPEDE & HAVOC MODELS

WILDCAT



ROOFS

BIMINI TOP

2436-421

'18-'20 WILDCAT X MODELS

HARD TOP

- » Durable polyethylene construction provides overhead coverage from the elements and reduces exposure to sun
- » Textured surface
- » Removable plug provides easy installation of whip flag
- » Auxiliary Mounting Kit included



2436-419

'18-'20 WILDCAT X MODELS

LIGHT BAR MOUNT

1436-724 ALUMINUM

ALL WILDCAT MODELS

WINDSHIELDS

FULL WINDSHIELD

2436-422

'18-'20 WILDCAT X MODELS

MOTORIZED WINDSHIELD WIPER KIT

1436-841

FITS FULL GLASS FLIP-UP WINDSHIELD (1436-661)

MANUAL WINDSHIELD WIPER

1436-582

'12-'20 WILDCAT X & '13-'18 WILDCAT 4 MODELS

WINDSHIELD WASHER KIT

1436-843

'12-'20 WILDCAT X & '13-'18 WILDCAT 4 MODELS

HALF WINDSHIELD

2436-424

'18-'20 WILDCAT X MODELS

WINDSCREEN

1436-826

'12-'20 WILDCAT X & WILDCAT 4 MODELS

REAR WINDOWS

REAR WINDOW

1436-828

'13-'18 WILDCAT 4 MODELS

BACK NET

1436-723

'12-'20 WILDCAT X & WILDCAT 4 MODELS

DOORS

ALUMINUM FRONT DOORS

- » Designed to increase your knee and elbow room
- » The lightweight aluminum tube frame and skins provide excellent coverage
- » Sealed edges help keep out dirt, sand and debris
- » Easy bolt-on installation
- » Includes driver and passenger doors



1436-892 BLACK

'12-'20 WILDCAT X & WILDCAT 4 MODELS (FRONT)

BUMPERS

ALUMINUM BUMPERS – FRONT

1436-684 BRUSHED ALUMINUM

1436-894 MATTE BLACK

1436-895 ORANGE METALLIC

1436-896 TEAM ARCTIC GREEN

2436-818 MEDIUM GREEN

'12-'20 WILDCAT X & WILDCAT 4 MODELS

ALUMINUM BUMPERS – REAR

1436-685 BRUSHED ALUMINUM

1436-898 MATTE BLACK

2436-819 MEDIUM GREEN

'12-'20 WILDCAT X & WILDCAT 4 MODELS

STEEL BRUSHGUARD BUMPER – FRONT

1436-686 BLACK

'12-'20 WILDCAT X & WILDCAT 4 MODELS

STEEL BRUSHGUARD BUMPER – REAR

- » Durable 1.25-in. steel tube construction protects the vehicle body and lights from brush and debris
- » Bumper style complements Steel Side Rails (1436-902)
- » Complements front Steel Brushguard Bumper (1436-686)



1436-832 BLACK

'12-'20 WILDCAT X & WILDCAT 4 MODELS

SKID PLATES

SKID PLATES – HMWPE

- » High-molecular-weight polyethylene provides superior impact resistance and allows you to glide over obstacles
- » Wraparound design protects rocker panels and floorboard
- » Replaceable 0.5-in. thick UHMWPE rear scrub plate
- » Access holes for maintenance and drainage



1436-662

'12-'20 WILDCAT X MODELS

1436-677

'13-'18 WILDCAT 4 MODELS

FRONT A-ARM GUARDS – HMWPE

- » Provide additional protection to CV boot and steering arm
- » Rugged 0.25-in. thick polyethylene material
- » Large drainage holes to reduce buildup



1436-663

'12-'20 WILDCAT X & WILDCAT 4 MODELS

ALUMINUM FRONT & REAR A-ARM GUARDS

1436-926 FRONT

'12-'20 WILDCAT X & WILDCAT 4 MODELS

1436-927 REAR

'12-'20 WILDCAT X & WILDCAT 4 MODELS

ALUMINUM SIDE GUARDS

- » Helps protect rocker panels
- » 10-gauge aluminum construction
- » Installs with or without Aluminum Skid Plate
- » Premium smooth grain anodized finish complements other aluminum accessories
- » Side Guard Extensions (1436-924) are required for added protection on Wildcat 4 models
- » Not compatible with side rails



1436-922 SIDE GUARDS

'12-'20 WILDCAT X & WILDCAT 4 MODELS (FRONT)

1436-924 SIDE GUARD EXTENSIONS

'13-'18 WILDCAT 4 MODELS (REAR)

ALUMINUM SIDE RAILS

- » Added protection for the side of your vehicle
- » Flush mount installation maintains vehicle ground clearance
- » Rugged and lightweight tubular aluminum frame
- » Designed to complement Wildcat Aluminum Bumpers
- » Also works on Wildcat 4 in conjunction with Side Rail Extensions (1436-905)



1436-904

'12-'20 WILDCAT X & WILDCAT 4 MODELS (FRONT)

ALUMINUM SIDE RAIL EXTENSIONS

1436-905

'13-'18 WILDCAT 4 MODELS (REAR)

STEEL SIDE RAILS

1436-902

'12-'20 WILDCAT X & WILDCAT 4 MODELS (FRONT)

STEEL SIDE RAIL EXTENSIONS

1436-903

'13-'18 WILDCAT 4 MODELS (REAR)

FRONT FENDERS

- » Suspension-mounted design works through full travel
- » Steel mounting frame with TPO plastic fender
- » Maintains flexibility in all weather conditions



1436-679 '12-'20 WILDCAT X & WILDCAT 4 MODELS

REAR FENDER FLARES

1436-682 '12-'20 WILDCAT X & WILDCAT 4 MODELS

WINCHES

FRONT WINCH MOUNT



1436-692 '12-'20 WILDCAT X & WILDCAT 4 MODELS

MULTI-MOUNT WINCH CARRIER

2436-133 5,000-LB. WINCH '12-'20 WILDCAT X & WILDCAT 4 MODELS

REAR WINCH RECEIVER

2436-139 5,000-LB. WINCH '12-'20 WILDCAT X & WILDCAT 4 MODELS

BRUSHED ALUMINUM BUMPER FOR FRONT WINCH MOUNT

1436-695 ALUMINUM '12-'20 WILDCAT X & WILDCAT 4 MODELS

MULTI-MOUNT WINCH HARNESS

2436-109 '12-'20 WILDCAT X & WILDCAT 4 MODELS

WILDCAT 4 EXTENSION FOR MULTI-MOUNT WINCH HARNESS

1436-697 '13-'18 WILDCAT 4 MODELS

WIRELESS REMOTE UPGRADE KIT

2436-110 ALL ARCTIC CAT OFF ROAD / WARN PROVANTAGE WINCH KITS

CORDED REMOTE UPGRADE KIT

2436-114 ALL ARCTIC CAT OFF ROAD / WARN PROVANTAGE WINCH KITS

STANDARD ROLLER FAIRLEAD

2441-933 '12-'20 WILDCAT X & WILDCAT 4 MODELS; '15-'17 PROWLER; '16-'17 HDX

HAWSE FAIRLEAD

2441-935 '12-'20 WILDCAT X & WILDCAT 4 MODELS; '15-'17 PROWLER; '16-'17 HDX

HITCH LOCK

1436-855 5/8-IN. PIN FITS 2-IN. X 2-IN. RECEIVERS

WINCH ACCESSORIES KIT



637639 UNIVERSAL

ROV SYNTHETIC WINCH ROPE

2441-113 USE WITH 4,000-LB. & 5,000-LB. WINCHES

CARGO STORAGE

SHOULDER BAG

1436-770 '12-'20 WILDCAT X & WILDCAT 4 MODELS

FUEL CAN HOLDER

1436-854 '12-'20 WILDCAT X & WILDCAT 4 MODELS

SCEPTER 2.5-GALLON FUEL CAN



1436-952 UNIVERSAL – FITS FUEL CAN HOLDER (1436-854)

INTERIOR

SUN VISOR



2436-489

UNIVERSAL

SIDE BAR PAD – REAR

1436-840

'13-'18 WILDCAT 4 MODELS

REARVIEW MIRROR

- » 10-in. x 3.5-in. wide-angle, adjustable convex housing provides excellent rear visibility
- » Constructed with durable, high-strength reinforced materials
- » 1.75-in. ROPS tube clamp
- » Includes installation tools and all mounting hardware for easy assembly



2436-378

'12-'20 WILDCAT X & WILDCAT 4 MODELS

AUDIO

KICKER / SSV WORKS AUDIO PACKAGE – STAGE 1

- » All marine-grade components for superior weather resistance
- » SSV Works Bluetooth audio controller with LCD display
- » AM/FM, auxiliary input and Bluetooth
- » Integrated amplifier with 6 preset equalizer options
- » 6.5-in. Kicker speakers (2) with titanium dome tweeter
- » Also includes enclosures, antenna and custom-fit wiring harness for Wildcat models
- » Easy installation



2436-425

'12-'20 WILDCAT X & WILDCAT 4 MODELS

KICKER / SSV WORKS SPEAKER PODS – STAGE 2

2436-499

'12-'20 WILDCAT X & WILDCAT 4 MODELS (UNIVERSAL)

WHEELS & TIRES

SET OF 4



1436-786 14-IN. (SET OF 4)

'12-'20 WILDCAT X MODELS

1436-787 15-IN. (SET OF 4)

'12-'20 WILDCAT X MODELS

393 WILDCAT WHEEL

1436-488 14X7 – FRONT

1436-489 14X8 – REAR

VEHICLE COVERS

TRANSPORT/STORAGE COVER



2436-461

'18-'20 WILDCAT X

WILDCAT TRAIL/SPORT



CABS

SOFT ROOF WITH BACK PANEL

1436-992 '14-'20 WILDCAT TRAIL & WILDCAT SPORT MODELS

ROOFS

ALUMINUM ROOF

- » Lightweight overhead protection
- » Great for mounting lights
- » Molded rubber access protectors add comfort and style
- » Simple mounting hardware for easy installation
- » Built-in whip flag mounting location



2436-031 BLACK '14-'20 WILDCAT TRAIL & WILDCAT SPORT MODELS

BIMINI TOP

2436-000 BLACK '14-'20 WILDCAT TRAIL & WILDCAT SPORT MODELS

PRINTED BIMINI TOP

2436-163 '14-'20 WILDCAT TRAIL & WILDCAT SPORT MODELS

CAMO BIMINI TOP

2436-412 '14-'20 WILDCAT TRAIL & WILDCAT SPORT MODELS

WINDSHIELDS

FULL WINDSHIELD

1436-988 '14-'20 WILDCAT TRAIL & WILDCAT SPORT MODELS

FLIP-UP WINDSHIELD

2436-162 '14-'20 WILDCAT TRAIL & WILDCAT SPORT MODELS

HALF WINDSHIELD

2436-017 '14-'20 WILDCAT TRAIL & WILDCAT SPORT MODELS

WINDSCREEN

1436-989 '14-'20 WILDCAT TRAIL & WILDCAT SPORT MODELS

REAR WINDOWS

REAR WINDOW

1436-990 '14-'20 WILDCAT TRAIL & WILDCAT SPORT MODELS

SOFT REAR WINDOW

2436-030 '14-'20 WILDCAT TRAIL & WILDCAT SPORT MODELS

DOORS

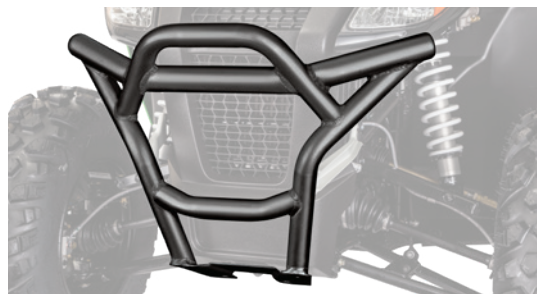
DOOR EXTENSIONS

2436-142 '14-'20 WILDCAT TRAIL & WILDCAT SPORT MODELS

BUMPERS

ALUMINUM BUMPERS – FRONT

- » Sport-styled, lightweight aluminum construction
- » Steel mounting brackets for added strength



1436-977 BRUSHED ALUMINUM

2436-018 BLACK

2436-020 TEAM ARCTIC GREEN '14-'20 WILDCAT TRAIL & WILDCAT SPORT MODELS

ALUMINUM BUMPERS – REAR

1436-978 BRUSHED ALUMINUM

2436-019 BLACK

2436-021 TEAM ARCTIC GREEN

2436-479 MEDIUM GREEN '14-'20 WILDCAT TRAIL & WILDCAT SPORT MODELS

BRUSHGUARD BUMPER – FRONT

1436-979 FRONT '14-'20 WILDCAT TRAIL & WILDCAT SPORT MODELS

BRUSHGUARD BUMPER – REAR

- » Durable 1.25-in. powder-coated steel protects from brush and debris
- » Matches Wildcat Trail and Wildcat Sport accessories



1436-980 REAR

'14-'20 WILDCAT TRAIL & WILDCAT SPORT MODELS

LIGHTING

LED HEADLIGHT BULBS

2436-811 H11 (PAIR)

UNIVERSAL

SKID PLATES

SKID PLATES – HMWPE

1436-995

*14-*20 WILDCAT TRAIL & WILDCAT SPORT MODELS

A-ARM GUARDS – HMWPE REAR

2436-042 REAR

*14-*20 WILDCAT TRAIL MODELS

ALUMINUM A-ARM GUARDS

- » 10-gauge aluminum helps protect suspension and drivetrain
- » Premium smooth grain anodized finish complements other aluminum accessories
- » Quick and easy installation



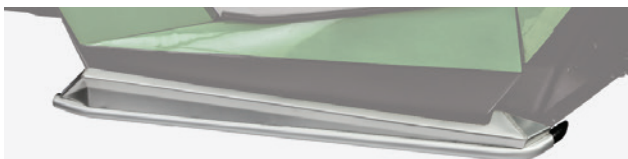
1436-972 FRONT

1436-971 REAR

*14-*20 WILDCAT TRAIL MODELS

ALUMINUM ROCK SLIDERS

- » Flush mount installation maintains excellent ground clearance and protection
- » Lightweight aluminum construction
- » Designed to complement Aluminum Bumpers
- » Sold as a pair



1436-982 BRUSHED ALUMINUM

2436-820 MEDIUM GREEN

*14-*20 WILDCAT TRAIL & WILDCAT SPORT MODELS

STEEL ROCK SLIDERS

1436-981

*14-*20 WILDCAT TRAIL & WILDCAT SPORT MODELS

FENDER FLARES

2436-003 FRONT

2436-004 REAR

*14-*20 WILDCAT TRAIL MODELS

WINCHES

WIRELESS REMOTE UPGRADE KIT – ALL VEHICLES

2436-110

ALL ARCTIC CAT OFF ROAD / WARN PROVANTAGE WINCHES

CORDED REMOTE UPGRADE KIT – ALL VEHICLES

2436-114

ALL ARCTIC CAT OFF ROAD / WARN PROVANTAGE WINCHES

PLOW ROLLER FAIRLEAD

2441-931

*14-*20 WILDCAT TRAIL & WILDCAT SPORT MODELS; *14 & OLDER PROWLERS; *11-*15 HDX; ALL ATVS

HAWSE FAIRLEAD

2441-932

*14-*20 WILDCAT TRAIL & WILDCAT SPORT MODELS; *14 & OLDER PROWLERS; *11-*15 HDX; ALL ATVS

WINCH ACCESSORY KIT

637639

UNIVERSAL

ROV SYNTHETIC WINCH ROPE

0541-570

USE WITH ALUMINUM DRUM ARCTIC CAT OFF ROAD / WARN 2,500-LB. & 3,000-LB. WINCHES

PLOWS

QUICK-ATTACH PLOW MOUNTING KIT

2436-209

*14-*20 WILDCAT TRAIL MODELS

POLYETHYLENE PLOW BLADE

0436-296 60-IN. BLADE – YELLOW

PLOW BLADE ATTACHMENTS

0436-231 SNOW DEFLECTORS

USE WITH 50-IN. STRAIGHT BLADES

0436-299 SNOW DEFLECTORS

USE WITH 60-IN. STRAIGHT BLADES (EXCLUDES SPEEDPLOW PRODUCTS)

0541-018 EDGE MARKERS

USE WITH ALL NON-SPEEDPLOW BLADES

CARGO STORAGE

OVERHEAD BAGS

2436-026

*14-*20 WILDCAT TRAIL & WILDCAT SPORT MODELS

KICK PANEL BAGS

2436-027

*14-*20 WILDCAT TRAIL & WILDCAT SPORT MODELS

SHOULDER BAG

2436-022

*14-*20 WILDCAT TRAIL & WILDCAT SPORT MODELS

REAR CARGO BOX

2436-408

*14-*20 WILDCAT TRAIL & WILDCAT SPORT MODELS

TRUNK BAG

- » Zipperless bag with dual-buckle closure
- » Lightweight aluminum frame
- » Fade-resistant heavy-duty 18-oz. PVC-coated polyester material



2436-028

'14-'20 WILDCAT TRAIL & WILDCAT SPORT MODELS

ANGLE BARS

- » Baja-inspired steel tube design with bolt-on mounting plates
- » Factory designed to accommodate other Arctic Cat Off Road accessories



1436-976 BLACK

'17-'20 WILDCAT TRAIL & WILDCAT SPORT MODELS

SPARE TIRE CARRIER

- » Fits up to a 28-in. Arctic Cat Off Road Wheel/Tire
- » Installs directly to Wildcat Trail / Wildcat Sport Angle Bars (1436-976), required for installation (sold separately)
- » OEM integration and styling
- » Combination steel and aluminum construction for optimum strength and weight



1436-975

'14-'20 WILDCAT TRAIL & WILDCAT SPORT MODELS

INTERIOR

SUN VISOR

2436-489

UNIVERSAL

REARVIEW MIRROR

- » 10-in. x 3.5-in. wide-angle, adjustable convex housing provides excellent rear visibility
- » Constructed with durable, high-strength reinforced materials
- » Clamshell mounting clamp fits ROPS tubing from 0.75-in. to 1-in.
- » Includes installation tools and all mounting hardware for easy assembly



2436-378

'12-'20 WILDCAT & WILDCAT 4 MODELS

DASH-MOUNTED MIRROR

2436-012 LEFT HAND

'14-'20 WILDCAT TRAIL & WILDCAT SPORT MODELS

2436-013 RIGHT HAND

'14-'20 WILDCAT TRAIL & WILDCAT SPORT MODELS

AUDIO

KICKER / SSV WORKS AUDIO PACKAGE – STAGE 1

2436-460

'14-'20 WILDCAT TRAIL & WILDCAT SPORT MODELS

KICKER / SSV WORKS SPEAKER PODS – STAGE 2

2436-499

UNIVERSAL

VEHICLE COVERS

TRANSPORT/STORAGE COVER

1436-998

'14-'20 WILDCAT TRAIL MODELS

2436-214

'15-'20 WILDCAT SPORT MODELS

2436-183

'14-'20 WILDCAT TRAIL MODELS WITH ANGLE BARS OR SPARE TIRE CARRIER INSTALLED

2436-187

'15-'20 WILDCAT SPORT MODELS WITH ANGLE BARS OR SPARE TIRE CARRIER INSTALLED



**CALL OR VISIT YOUR
LOCAL ARCTIC CAT
DEALER FOR MORE
INFORMATION**

⚠️ WARNING: Cancer and Reproductive Harm - www.P65Warnings.ca.gov.

This WARNING applies to all items that can be ordered on this page.

All specifications, claims, prices and information contained within are based upon current knowledge as of September 1, 2023, and are subject to change without notice. Prices do not include freight, handling or setup charges. ATVs and ROVs can be hazardous to operate. Improper use can cause severe injury or death. All Arctic Cat Off Road vehicle operators should read the Owner's Guide for their vehicle before operating. All riders shown in this catalog are professional riders in a controlled environment. For your safety, each rider must wear a seat belt (if equipped); and use handholds/steering wheel, use doors and cab nets (if equipped), and stay completely inside the vehicle. For all Arctic Cat Off Road vehicles other than the Prowler EV, each rider must also wear an approved helmet, eye protection and protective clothing. Never operate on paved surfaces or public roads. Avoid excessive speeds and sharp turns, and be particularly careful on difficult terrain. Never engage in stunt driving, and never drive or ride under the influence of alcohol or drugs. Never carry a passenger in the cargo box or exceed seating capacity on an ROV; never carry a passenger on a single-rider ATV. Unless otherwise noted, Arctic Cat Off Road vehicles are only for operators who are 16 years of age or older who have a valid driver's license. The minimum operator age for the Alterra 150 is 14, and the minimum operator age for the Alterra 90 is 12. Riders younger than 16 require adult supervision. Arctic Cat Off Road recommends that all riders take a training course. For ATV safety or training information in the U.S., call the ATV Safety Institute at (800) 887-2887. In Canada, please contact the Canada Safety Council at (613) 739-1535 or see your dealer. For ROV training, visit <http://rohva.org>. All product names, logos, trademarks, and brands are properties of their respective owners. Arctic Cat, Arcticwear, Alterra, Black Magic, Fast-n-Latch, MudPro, Prowler, SpeedRack, Stampede, TRV, and Wildcat, are trademarks of Textron Inc. or its affiliates and are registered in the U.S. and other countries. Havoc, HDX, Prowler Pro, Prowler EV, Prowler 500, Ready 2 Roll, SpeedLock, SpeedPlow, SpeedRatchet, Arctic Cat Off Road, TigerTrax, Wildcat X, Wildcat XX, Wildcat Sport, Wildcat Trail, WindGuard, WindLock, XT, GTX, and XTZ are trademarks of Textron Inc. or its affiliates.

Vision X and Firebar are trademarks of Vision X Lighting. WARN and Spydura are trademarks of Warn Industries, Inc. and are registered in the U.S. and/or other countries. ProVantage is a trademark of Warn Industries, Inc. SSV Works is a trademark of SSV Works, Inc. and is registered in the U.S. and/or other countries. KMC and KMC Wheels are trademarks of Wheel Pros, LLC and are registered in the U.S. and/or other countries. Maxxis is trademark of Cheng Shin Rubber Ind. Co., Ltd and is registered in the U.S. and/or other countries. Behemoth and Bighorn are trademarks of Cheng Shin Rubber Ind. Co., Ltd. Rockford Fosgate is a trademark of Rockford Corporation and is registered in the U.S. and/or other countries. Stealth6 Ultra and Wet Sounds are trademarks of Wet Sounds, Inc. Kenda is a trademark of Kenda Rubber Industrial Co. and is registered in the U.S. and/or other countries. Blackwater Evolution is a trademark of The Carlstar Group, LLC and is registered in the U.S. and/or other countries. Shockstrap is a trademark of FGILL Enterprise, LLC and is registered in the U.S. and/or other countries. PRP and PRP XC are trademarks of Bestop PRP, LLC. Cordura is a trademark of Invista North America SARL and is registered in the U.S. and/or other countries. Rotopax is a trademark of Great Outdoor Products, LLC and is registered in the U.S. and/or other countries. Elka is a trademark of Elka Suspension Inc. and is registered in the U.S. and/or other countries. TrailFinder is a trademark of The Reinatt-Thomas Corporation and is registered in the U.S. and/or other countries. iPad is a trademark of Apple Inc. ©2023 Textron Specialized Vehicles Inc. Arctic Cat Off Road ATVs and Side by Sides (ROVs) are world-class products from Textron Specialized Vehicles. Printed in the USA. At Arctic Cat Off Road, we're always improving our Side by Sides and ATVs to provide the best performance and experience. That's why the specifications for 2024 model Arctic Cat Off Road Side by Sides and ATVs in this brochure at the time of printing are subject to change without notice.

See your dealer for details.



arcticcat.com

treadlightly!®
LEAVING A GOOD IMPRESSION™



ENG: 82773-G2



© 2023 Arctic Cat Division of Textron Inc. All rights reserved 1451 Marvin Griffin Road, Augusta, GA 30906